

Anti-SH3BP2 (phospho S427) antibody ab2176

1 图像

概述

产品名称

Anti-SH3BP2 (phospho S427)抗体

描述

兔多克隆抗体to SH3BP2 (phospho S427)

① 该产品是 **快线抗体**, 通过亲和纯化得到。对抗原肽有高灵敏度及特异性(ELISA测试)。

[Read the terms of use »](#)

宿主

Rabbit

种属反应性

与反应: Human

免疫原

Synthetic peptide corresponding to Human SH3BP2 aa 400-500 (phospho S427).

 [Run BLAST with](#)

 [Run BLAST with](#)

常规说明

Phosphorylation of SH3BP2 occurs on Ser 427 for activation. SH3BP2 mediates interactions of huntingtin and MLK2 (mixed lineage kinase).

The Life Science industry has been in the grips of a reproducibility crisis for a number of years. Abcam is leading the way in addressing this with our range of recombinant monoclonal antibodies and knockout edited cell lines for gold-standard validation. Please check that this product meets your needs before purchasing.

If you have any questions, special requirements or concerns, please send us an inquiry and/or contact our Support team ahead of purchase. Recommended alternatives for this product can be found below, along with publications, customer reviews and Q&As

性能

形式

Liquid

存放说明

Shipped at 4°C. Upon delivery aliquot and store at -20°C or -80°C. Avoid repeated freeze / thaw cycles.

存储溶液

Preservative: 0.01% Sodium azide

Constituents: 0.424% Potassium phosphate, 0.87% Sodium chloride

纯度

Immunogen affinity purified

纯化说明

Affinity purified chromatography using phospho peptide coupled to agarose beads followed by solid phase adsorption(s) against non-phospho peptide and non-specific peptide to remove any unwanted reactivities.

Primary antibody说明	Phosphorylation of SH3BP2 occurs on Ser 427 for activation. SH3BP2 mediates interactions of huntingtin and MLK2 (mixed lineage kinase).
克隆	多克隆
同种型	IgG

应用

Fast track antibodies constitute a diverse group of products that have been released to accelerate your research, but are not yet fully characterized. They have all been affinity purified and show high titre values against the immunizing peptide (by ELISA).

Fast track terms of use

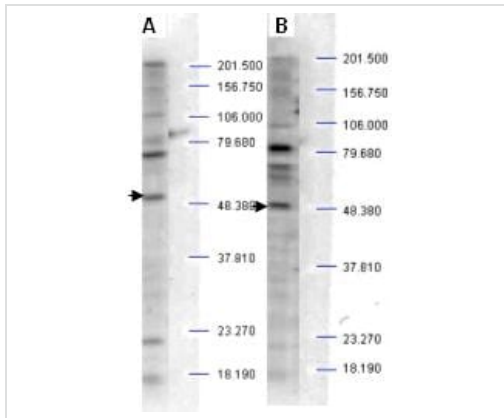
应用	Ab评论	说明
WB		Use at an assay dependent concentration. Predicted molecular weight: 62 kDa. Reacts in Western blotting with a band at about 60kD, that probably corresponds to SH3BP1 (Not tested for phospho specificity by Western).
ELISA		Use at an assay dependent concentration. Tested in peptide ELISA against 0.1 ug of the immunizing peptide.

靶标

功能	Binds differentially to the SH3 domains of certain proteins of signal transduction pathways. Binds to phosphatidylinositols; linking the hemopoietic tyrosine kinase fes to the cytoplasmic membrane in a phosphorylation dependent mechanism.
组织特异性	Expressed in a variety of tissues including lung, liver, skeletal muscle, kidney and pancreas.
疾病相关	Defects in SH3BP2 are the cause of cherubism (CRBM) [MIM:118400]. CRBM is an autosomal dominant inherited syndrome characterized by excessive bone degradation of the upper and lower jaws, which often begins around three years of age. It is followed by development of fibrous tissue masses, which causes a characteristic facial swelling.
序列相似性	Contains 1 PH domain. Contains 1 SH2 domain.

图片

This Fast-Track antibody is not yet fully characterised. These images represent **inconclusive preliminary data**.



Western blot - Anti-SH3BP2 (phospho S427)
antibody (ab2176)

Western blot analysis is shown using ab2176 to detect endogenous protein present in unstimulated human whole cell lysates. The band as indicated by the arrowheads is evident in both M059 cells (panel A) and PC-3 cells (panel B). Comparison to a molecular weight marker indicates a band of ~60 kDa that probably corresponds to human SH3BP2 protein. The blot was incubated with a 1:500 dilution of the antibody at room temperature followed by detection using standard techniques.

Please note: All products are "FOR RESEARCH USE ONLY. NOT FOR USE IN DIAGNOSTIC PROCEDURES"

Terms and conditions

- Guarantee only valid for products bought direct from Abcam or one of our authorized distributors