

Anti-SH2D1A/SAP antibody [EPR3168] ab109120

重组 RabMAb

4 图像

概述

产品名称	Anti-SH2D1A/SAP抗体[EPR3168]
描述	兔单克隆抗体[EPR3168] to SH2D1A/SAP
宿主	Rabbit
经测试应用	适用于: WB 不适用于: Flow Cyt, ICC/IF or IHC-P
种属反应性	与反应: Mouse, Rat, Human
免疫原	Synthetic peptide. This information is proprietary to Abcam and/or its suppliers.
阳性对照	WB: Molt-4, Jurkat, PC-12 and K562 cell lysates and mouse brain tissue lysate.
常规说明	This product is a recombinant monoclonal antibody, which offers several advantages including: <ul style="list-style-type: none">- High batch-to-batch consistency and reproducibility- Improved sensitivity and specificity- Long-term security of supply- Animal-free production For more information see here . Our RabMAb [®] technology is a patented hybridoma-based technology for making rabbit monoclonal antibodies. For details on our patents, please refer to RabMAb[®] patents .

性能

形式	Liquid
存放说明	Shipped at 4°C. Store at +4°C short term (1-2 weeks). Upon delivery aliquot. Store at -20°C. Stable for 12 months at -20°C.
存储溶液	pH: 7.20 Preservative: 0.01% Sodium azide Constituents: 40% Glycerol (glycerin, glycerine), 59% PBS, 0.05% BSA
纯度	Protein A purified
克隆	单克隆
克隆编号	EPR3168
同种型	IgG

应用

The Abpromise guarantee

Abpromise™ 承诺保证使用 ab109120 于以下的经测试应用

“应用说明”部分 下显示的仅为推荐的起始稀释度;实际最佳的稀释度/浓度应由使用者检定。

应用	Ab评论	说明
WB		1/1000 - 1/10000. Detects a band of approximately 16 kDa (predicted molecular weight: 14 kDa).

应用说明

Is unsuitable for Flow Cyt, ICC/IF or IHC-P.

靶标

功能

Inhibitor of the SLAM self-association. Acts by blocking recruitment of the SH2-domain-containing signal-transduction molecule SHP-2 to a docking site in the SLAM cytoplasmic region. Mediates interaction between FYN and SLAMF1. May also regulate the activity of the neurotrophin receptors NTRK1, NTRK2 and NTRK3.

组织特异性

Expressed at a high level in thymus and lung, with a lower level of expression in spleen and liver. Expressed in peripheral blood leukocytes, including T lymphocytes. Tends to be expressed at lower levels in peripheral blood leukocytes in patients with rheumatoid arthritis.

疾病相关

Defects in SH2D1A are a cause of lymphoproliferative syndrome X-linked type 1 (XLP1) [MIM:308240]; also known as X-linked lymphoproliferative disease (XLPD) or Duncan disease. XLP is a rare immunodeficiency characterized by extreme susceptibility to infection with Epstein-Barr virus (EBV). Symptoms include severe or fatal mononucleosis, acquired hypogammaglobulinemia, pancytopenia and malignant lymphoma.

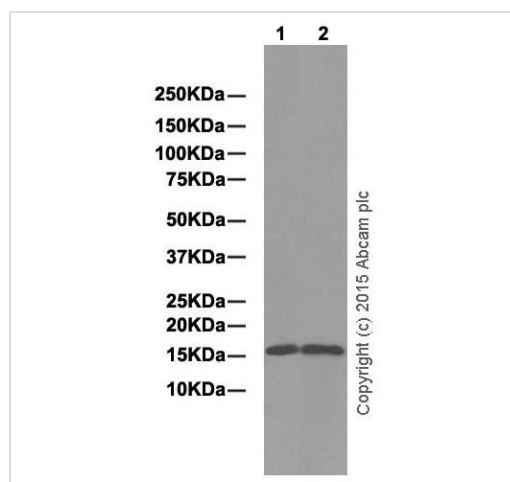
序列相似性

Contains 1 SH2 domain.

细胞定位

Cytoplasm.

图片



Western blot - Anti-SH2D1A/SAP antibody [EPR3168] (ab109120)

All lanes : Anti-SH2D1A/SAP antibody [EPR3168] (ab109120) at 1/2000 dilution (purified)

Lane 1 : PC-12 whole cell lysate

Lane 2 : Mouse brain tissue lysate

Lysates/proteins at 10 µg per lane.

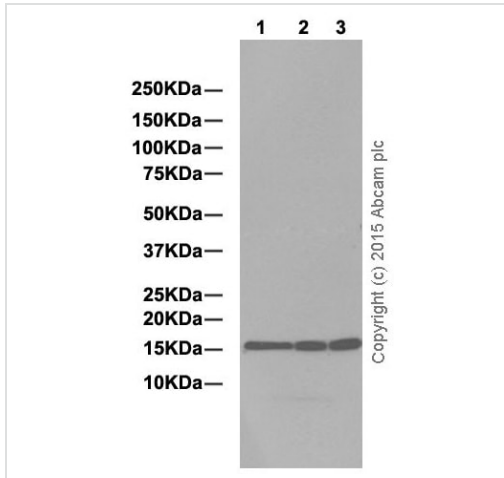
Secondary

All lanes : Goat Anti-Rabbit IgG H&L (HRP) ([ab97051](#)) at 1/50000 dilution

Predicted band size: 14 kDa

Observed band size: 16 kDa

Blocking and dilution buffer: 5% NFDM/TBST.



Western blot - Anti-SH2D1A/SAP antibody [EPR3168] (ab109120)

All lanes : Anti-SH2D1A/SAP antibody [EPR3168] (ab109120) at 1/2000 dilution (purified)

Lane 1 : MOLT-4 whole cell lysate

Lane 2 : Jurkat whole cell lysate

Lane 3 : K562 whole cell lysate

Lysates/proteins at 10 µg per lane.

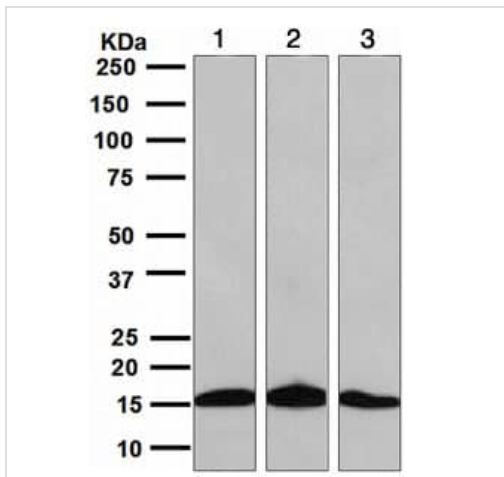
Secondary

All lanes : Goat Anti-Rabbit IgG H&L (HRP) ([ab97051](#)) at 1/50000 dilution

Predicted band size: 14 kDa

Observed band size: 16 kDa

Blocking and dilution buffer: 5% NFDM/TBST.



Western blot - Anti-SH2D1A/SAP antibody [EPR3168] (ab109120)

All lanes : Anti-SH2D1A/SAP antibody [EPR3168] (ab109120) at 1/1000 dilution (unpurified)

Lane 1 : MOLT-4 cell line lysate

Lane 2 : Jurkat cell line lysate

Lane 3 : K562 cell line lysate

Lysates/proteins at 10 µg per lane.

Predicted band size: 14 kDa

Why choose a recombinant antibody?



Research with confidence
Consistent and reproducible results



Long-term and scalable supply
Recombinant technology



Success from the first experiment
Confirmed specificity



Ethical standards compliant
Animal-free production

Anti-SH2D1A/SAP antibody [EPR3168] (ab109120)

Please note: All products are "FOR RESEARCH USE ONLY. NOT FOR USE IN DIAGNOSTIC PROCEDURES"

Our Abpromise to you: Quality guaranteed and expert technical support

- Replacement or refund for products not performing as stated on the datasheet
- Valid for 12 months from date of delivery
- Response to your inquiry within 24 hours
- We provide support in Chinese, English, French, German, Japanese and Spanish
- Extensive multi-media technical resources to help you
- We investigate all quality concerns to ensure our products perform to the highest standards

If the product does not perform as described on this datasheet, we will offer a refund or replacement. For full details of the Abpromise, please visit <https://www.abcam.cn/abpromise> or contact our technical team.

Terms and conditions

- Guarantee only valid for products bought direct from Abcam or one of our authorized distributors