

Anti-SET7 antibody [s4E5] ab14820

★★★★★ [1 Abreviews](#) [15 References](#) [7 图像](#)

概述

产品名称	Anti-SET7抗体[s4E5]
描述	小鼠单克隆抗体[s4E5] to SET7
宿主	Mouse
特异性	This antibody has been tested against recombinant SET7 but has not been tested against the endogenous protein yet.
经测试应用	适用于: WB, ICC/IF, Flow Cyt (Intra)
种属反应性	与反应: Mouse, Human, Recombinant fragment
免疫原	Recombinant full length protein corresponding to Human SET7.
阳性对照	WB: Recombinant SET7, SET7/9 transfected 293T cell lysate. ICC/IF: HeLa cells. Flow Cyt (Intra): Jurkat cells; HeLa Cells.
常规说明	<p>This product was changed from ascites to tissue culture supernatant on 24/01/2019. Please note that the dilutions may need to be adjusted accordingly. If you have any questions, please do not hesitate to contact our scientific support team.</p> <p>The Life Science industry has been in the grips of a reproducibility crisis for a number of years. Abcam is leading the way in addressing this with our range of recombinant monoclonal antibodies and knockout edited cell lines for gold-standard validation. Please check that this product meets your needs before purchasing.</p> <p>If you have any questions, special requirements or concerns, please send us an inquiry and/or contact our Support team ahead of purchase. Recommended alternatives for this product can be found below, along with publications, customer reviews and Q&As</p>

性能

形式	Liquid
存放说明	Shipped at 4°C. Store at +4°C short term (1-2 weeks). Upon delivery aliquot. Store at -20°C. Avoid freeze / thaw cycle.
存储溶液	<p>pH: 7.40</p> <p>Preservative: 0.02% Sodium azide</p> <p>Constituents: PBS, 10% Glycerol</p>
纯度	Tissue culture supernatant
纯化说明	Purified from TCS.

克隆	单克隆
克隆编号	s4E5
骨髓瘤	Sp2/0
同种型	IgG2b
轻链类型	kappa

应用

The Abpromise guarantee **Abpromise™**承诺保证使用ab14820于以下的经测试应用

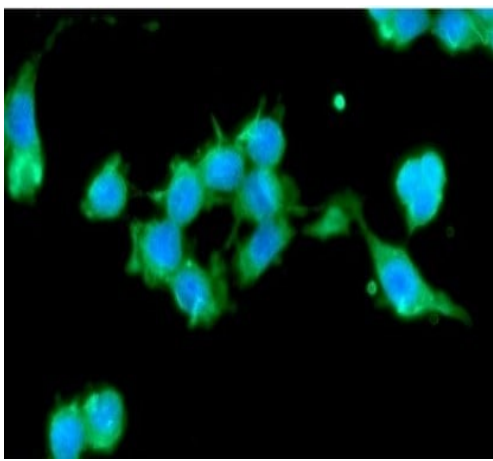
“应用说明”部分 下显示的仅为推荐的起始稀释度;实际最佳的稀释度/浓度应由使用者检定。

应用	Ab评论	说明
WB		1/250 - 1/2000. Predicted molecular weight: 50 kDa.
ICC/IF		Use at an assay dependent concentration.
Flow Cyt (Intra)		Use 1µg for 10 ⁶ cells. ab170192 - Mouse monoclonal IgG2b, is suitable for use as an isotype control with this antibody.

靶标

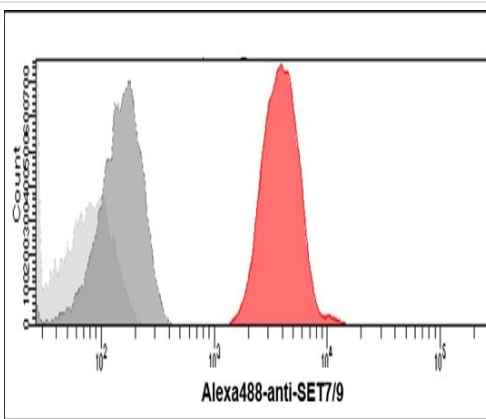
功能	Histone methyltransferase that specifically monomethylates 'Lys-4' of histone H3. H3 'Lys-4' methylation represents a specific tag for epigenetic transcriptional activation. Plays a central role in the transcriptional activation of genes such as collagenase or insulin. Recruited by IPF1/PDX-1 to the insulin promoter, leading to activate transcription. Has also methyltransferase activity toward non-histone proteins such as p53/TP53, TAF10, and possibly TAF7 by recognizing and binding the [KR]-[STA]-K in substrate proteins. Monomethylates 'Lys-189' of TAF10, leading to increase the affinity of TAF10 for RNA polymerase II. Monomethylates 'Lys-372' of p53/TP53, stabilizing p53/TP53 and increasing p53/TP53-mediated transcriptional activation. Also able to demethylated 'Lys-372' of p53/TP53 in vitro.
组织特异性	Widely expressed. Expressed in pancreatic islets.
序列相似性	Belongs to the histone-lysine methyltransferase family. SET7 subfamily. Contains 3 MORN repeats. Contains 1 SET domain.
结构域	The SET domain is necessary but not sufficient for histone methyltransferase activity.
细胞定位	Nucleus. Chromosome.

图片



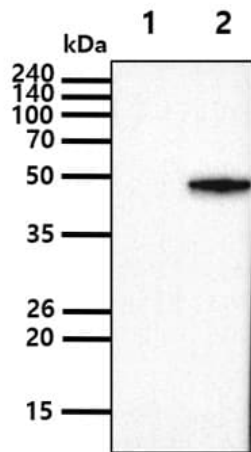
Immunocytochemistry/ Immunofluorescence - Anti-SET7 antibody [s4E5] (ab14820)

Immunocytochemistry/ Immunofluorescence analysis of SET7/9 in HeLa cells. The cell was stained with ab14820 (1:100). The secondary antibody (green) was used Alexa Fluor 488. DAPI was stained the cell nucleus (blue).



Flow Cytometry (Intracellular) - Anti-SET7 antibody [s4E5] (ab14820)

Flow cytometry analysis of SET7/9 in Jurkat cells. The cell was stained with ab14820 at 2-5 μ g for 1x10⁶ cells (red). A Goat anti mouse IgG (Alexa fluor 488) was used as the secondary antibody. Mouse monoclonal IgG was used as the isotype control (blue), cells without incubation with primary and secondary antibody was used as the negative control (black).



Western blot - Anti-SET7 antibody [s4E5] (ab14820)

All lanes : Anti-SET7 antibody [s4E5] (ab14820) at 1/2000 dilution

Lane 1 : 293T cell lysate

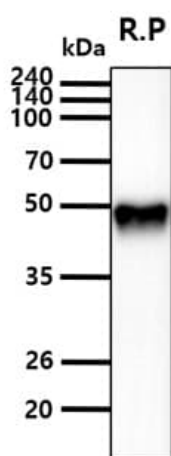
Lane 2 : SET7/9 transfected 293T cell lysate

Lysates/proteins at 5 µg per lane.

Secondary

All lanes : goat anti-mouse secondary antibody conjugated to HRP

Predicted band size: 50 kDa



Western blot - Anti-SET7 antibody [s4E5] (ab14820)

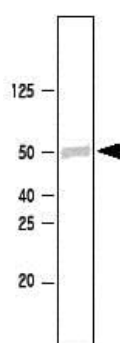
Anti-SET7 antibody [s4E5] (ab14820) at 1/1000 dilution +

Recombinant human SET7/9 protein

Secondary

Goat anti-mouse secondary antibody conjugated to HRP

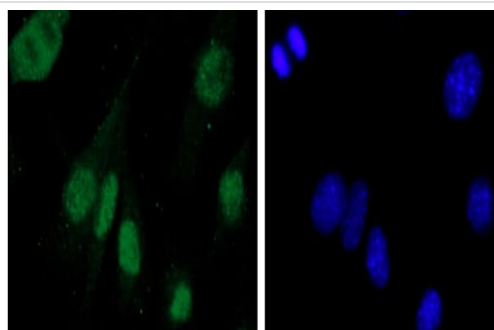
Predicted band size: 50 kDa



Western blot - Anti-SET7 antibody [s4E5] (ab14820)

Western blot analysis of recombinant SET7 using ab14820 at 1/1000. Proteins were visualised using a goat anti-mouse secondary antibody conjugated to HRP and a DAB detection system. Western blot analysis of recombinant SET7 using ab14820 at 1/1000. Proteins were visualised using a goat anti-mouse secondary antibody conjugated to HRP and a DAB detection system.

This image was produced using the ascites version of this antibody.

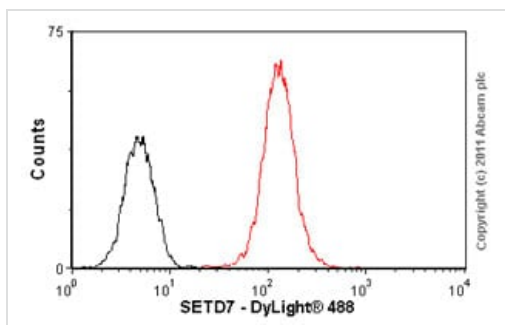


Immunocytochemistry/ Immunofluorescence - Anti-SET7 antibody [s4E5] (ab14820)

This image is courtesy of Katia Ancelin

Immunofluorescence was carried out using mouse cells in culture. Conditions: 4% PFA fixation and dilution with 0.5% triton, 10mg/ml BSA in PBS. Dilution of ab14820 used: 1/50. Green = ab14820 detected with secondary antibody (Alexa 488). Blue = DAPI stain.

This image was produced using the ascites version of this antibody.



Flow Cytometry (Intracellular) - Anti-SET7 antibody [s4E5] (ab14820)

Overlay histogram showing HeLa cells stained with ab14820 (red line). The cells were fixed with 80% methanol (5 min) and then permeabilized with 0.1% PBS-Tween for 20 min. The cells were then incubated in 1x PBS / 10% normal goat serum / 0.3M glycine to block non-specific protein-protein interactions. The cells were then incubated with the antibody (ab14820, 1µg/1x10⁶ cells) for 30 min at 22°C. The secondary antibody used was DyLight® 488 goat anti-mouse IgG (H+L) ([ab96879](#)) at 1/500 dilution for 30 min at 22°C. Isotype control antibody (black line) was mouse IgG2b [PLPV219] ([ab91366](#), 2µg/1x10⁶ cells) used under the same conditions. Acquisition of >5,000 events was performed. This antibody gave a positive signal in HeLa cells fixed with 4% paraformaldehyde (10 min)/permeabilized in 0.1% PBS-Tween used under the same conditions.

This image was produced using the ascites version of this antibody.

Please note: All products are "FOR RESEARCH USE ONLY. NOT FOR USE IN DIAGNOSTIC PROCEDURES"

Our Abpromise to you: Quality guaranteed and expert technical support

- Replacement or refund for products not performing as stated on the datasheet
- Valid for 12 months from date of delivery
- Response to your inquiry within 24 hours

- We provide support in Chinese, English, French, German, Japanese and Spanish
- Extensive multi-media technical resources to help you
- We investigate all quality concerns to ensure our products perform to the highest standards

If the product does not perform as described on this datasheet, we will offer a refund or replacement. For full details of the Abpromise, please visit <https://www.abcam.cn/abpromise> or contact our technical team.

Terms and conditions

- Guarantee only valid for products bought direct from Abcam or one of our authorized distributors