

Anti-SET7 antibody [EPR5574] ab124708

敲除验证
重组
RabMAb

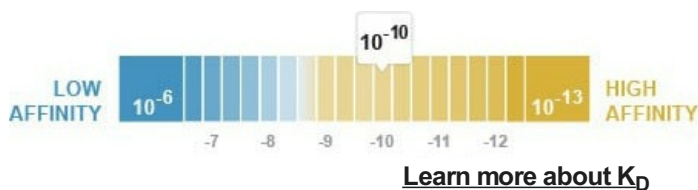
[5 References](#)
[8 图像](#)

概述

产品名称	Anti-SET7抗体[EPR5574]
描述	兔单克隆抗体[EPR5574] to SET7
宿主	Rabbit
经测试应用	适用于: WB, IP
种属反应性	与反应: Mouse, Rat, Human
免疫原	Synthetic peptide within Human SET7. The exact sequence is proprietary. Database link: Q8WTS6
阳性对照	WB: HeLa, U-2 OS, BxPC-3, Jurkat, MCF-7, C6, RAW264.7, PC-12, and NIH/3T3 cell lysates.
常规说明	<p>This product is a recombinant monoclonal antibody, which offers several advantages including:</p> <ul style="list-style-type: none"> - High batch-to-batch consistency and reproducibility - Improved sensitivity and specificity - Long-term security of supply - Animal-free production <p>For more information see here.</p> <p>Our RabMAb[®] technology is a patented hybridoma-based technology for making rabbit monoclonal antibodies. For details on our patents, please refer to RabMAb[®] patents.</p>

性能

形式	Liquid
存放说明	Shipped at 4°C. Store at +4°C short term (1-2 weeks). Upon delivery aliquot. Store at -20°C. Stable for 12 months at -20°C.
解离常数 (K_D)	$K_D = 6.93 \times 10^{-10}$ M



存储溶液	pH: 7.20 Preservative: 0.01% Sodium azide
------	--

	Constituents: 40% Glycerol (glycerin, glycerine), 0.05% BSA, 59% PBS
纯度	Protein A purified
克隆	单克隆
克隆编号	EPR5574
同种型	IgG

应用

The Abpromise guarantee **Abpromise™**承诺保证使用ab124708于以下的经测试应用

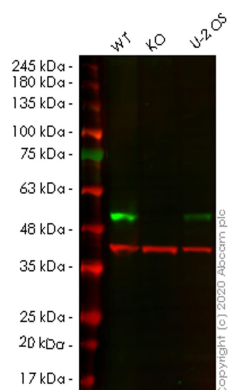
“应用说明”部分 下显示的仅为推荐的起始稀释度;实际最佳的稀释度/浓度应由使用者检定。

应用	Ab评论	说明
WB		1/1000 - 1/10000. Predicted molecular weight: 41 kDa.
IP		1/120. For unpurified use at 1/10 - 1/100.

靶标

功能	Histone methyltransferase that specifically monomethylates 'Lys-4' of histone H3. H3 'Lys-4' methylation represents a specific tag for epigenetic transcriptional activation. Plays a central role in the transcriptional activation of genes such as collagenase or insulin. Recruited by IPF1/PDX-1 to the insulin promoter, leading to activate transcription. Has also methyltransferase activity toward non-histone proteins such as p53/TP53, TAF10, and possibly TAF7 by recognizing and binding the [KR]-[STA]-K in substrate proteins. Monomethylates 'Lys-189' of TAF10, leading to increase the affinity of TAF10 for RNA polymerase II. Monomethylates 'Lys-372' of p53/TP53, stabilizing p53/TP53 and increasing p53/TP53-mediated transcriptional activation. Also able to demethylated 'Lys-372' of p53/TP53 in vitro.
组织特异性	Widely expressed. Expressed in pancreatic islets.
序列相似性	Belongs to the histone-lysine methyltransferase family. SET7 subfamily. Contains 3 MORN repeats. Contains 1 SET domain.
结构域	The SET domain is necessary but not sufficient for histone methyltransferase activity.
细胞定位	Nucleus. Chromosome.

图片



Western blot - Anti-SET7 antibody [EPR5574]
(ab124708)

All lanes : Anti-SET7 antibody [EPR5574] (ab124708) at 1/1000 dilution

Lane 1 : Wild-type HeLa cell lysate

Lane 2 : SETD7 knockout HeLa cell lysate

Lane 3 : U-2 OS cell lysate

Lysates/proteins at 20 µg per lane.

Secondary

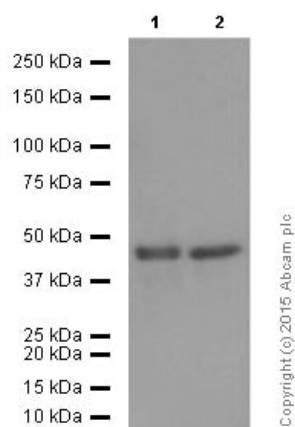
All lanes : Goat anti-Rabbit IgG H&L (IRDye® 800CW) preadsorbed ([ab216773](#)) at 1/10000 dilution

Predicted band size: 41 kDa

Observed band size: 50 kDa

Lanes 1-3: Merged signal (red and green). Green - ab124708 observed at 50 kDa. Red - loading control [ab8245](#) observed at 36 kDa.

ab124708 Anti-SET7 antibody [EPR5574] was shown to specifically react with SET7 in wild-type HeLa cells. Loss of signal was observed when knockout cell line [ab265770](#) (knockout cell lysate [ab257668](#)) was used. Wild-type and SET7 knockout samples were subjected to SDS-PAGE. ab124708 and Anti-GAPDH antibody [6C5] - Loading Control ([ab8245](#)) were incubated at room temperature for 2.5 hours at 1 in 1000 dilution and 1 in 20000 dilution respectively. Blots were developed with Goat anti-Rabbit IgG H&L (IRDye® 800CW) preadsorbed ([ab216773](#)) and Goat anti-Mouse IgG H&L (IRDye® 680RD) preadsorbed ([ab216776](#)) secondary antibodies at 1 in 20000 dilution for 1 hour at room temperature before imaging.



Western blot - Anti-SET7 antibody [EPR5574]
(ab124708)

All lanes : Anti-SET7 antibody [EPR5574] (ab124708) at 1/5000 dilution (purified)

Lane 1 : PC-12 cell lysate

Lane 2 : NIH/3T3 cell lysate

Lysates/proteins at 20 µg per lane.

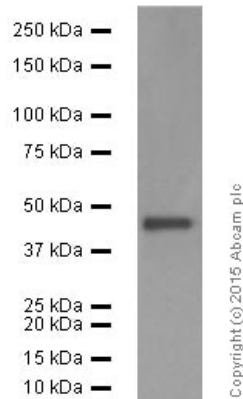
Secondary

All lanes : Goat Anti-Rabbit IgG H&L (HRP) ([ab97051](#)) at 1/1000 dilution (Goat Anti-Rabbit IgG, (H+L), Peroxidase conjugated)

Predicted band size: 41 kDa

Blocking buffer and concentration: 5% NFDM/TBST.

Diluting buffer and concentration: 5% NFDM /TBST.



Western blot - Anti-SET7 antibody [EPR5574]
(ab124708)

Anti-SET7 antibody [EPR5574] (ab124708) at 1/5000 dilution (purified) + MCF-7 cell lysate at 20 µg

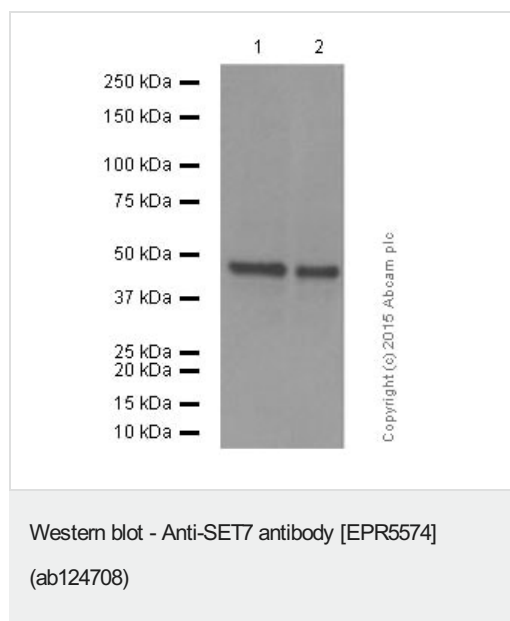
Secondary

Goat Anti-Rabbit IgG H&L (HRP) ([ab97051](#)) at 1/1000 dilution (Goat Anti-Rabbit IgG, (H+L), Peroxidase conjugated)

Predicted band size: 41 kDa

Blocking buffer and concentration: 5% NFDM/TBST.

Diluting buffer and concentration: 5% NFDM /TBST.



All lanes : Anti-SET7 antibody [EPR5574] (ab124708) at 1/2000 dilution (purified)

Lane 1 : HeLa cell lysate

Lane 2 : Jurkat cell lysate

Lysates/proteins at 20 µg per lane.

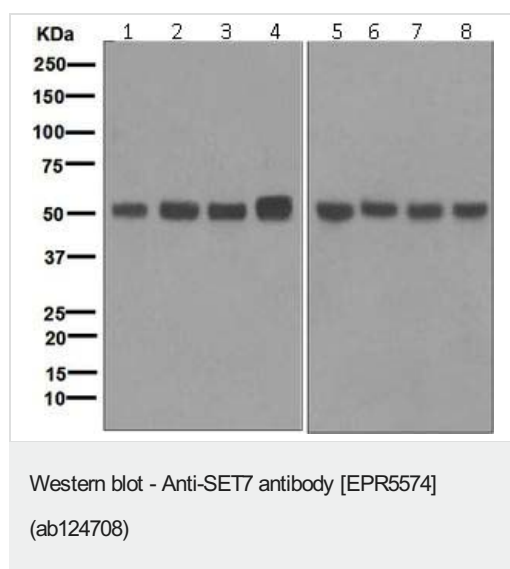
Secondary

All lanes : Goat Anti-Rabbit IgG H&L (HRP) (**ab97051**) at 1/1000 dilution (Goat Anti-Rabbit IgG, (H+L), Peroxidase conjugated)

Predicted band size: 41 kDa

Blocking buffer and concentration: 5% NFDM/TBST.

Diluting buffer and concentration: 5% NFDM /TBST.



All lanes : Anti-SET7 antibody [EPR5574] (ab124708) at 1/1000 dilution (unpurified)

Lane 1 : HeLa cell lysate

Lane 2 : BxPC-3 cell lysate

Lane 3 : Jurkat cell lysate

Lane 4 : MCF-7 cell lysate

Lane 5 : C6 cell lysate

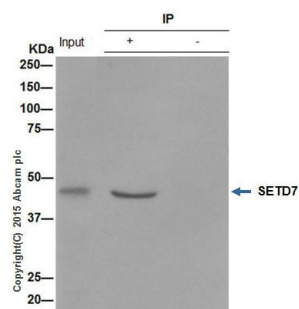
Lane 6 : RAW264.7 cell lysate

Lane 7 : PC-12 cell lysate

Lane 8 : NIH/3T3 cell lysate

Lysates/proteins at 10 µg per lane.

Predicted band size: 41 kDa

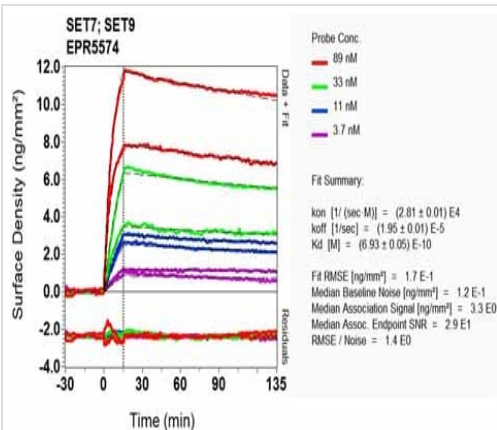


Immunoprecipitation - Anti-SET7 antibody
[EPR5574] (ab124708)

ab124708 (purified) at 1/120 immunoprecipitating SET7 in Jurkat whole cell lysate. 10 ug of cell lysate was present in the input. For western blotting, a HRP-conjugated Veriblot for IP Detection Reagent (**ab131366**) (1/1,500) was used for detection. A rabbit monoclonal IgG (**ab172730**) was used instead of **ab128913** as a negative control (Lane 3).

Blocking buffer and concentration: 5% NFDM/TBST.

Diluting buffer and concentration: 5% NFDM /TBST.



OL-RD Scanning - Anti-SET7 antibody [EPR5574]
(ab124708)

Equilibrium dissociation constant (K_D)

Learn more about K_D

[Click here to learn more about \$K_D\$](#)

Why choose a
recombinant antibody?



**Research with
confidence**
Consistent and
reproducible results



**Long-term and
scalable supply**
Recombinant
technology



**Success from the
first experiment**
Confirmed
specificity



**Ethical standards
compliant**
Animal-free
production

Anti-SET7 antibody [EPR5574] (ab124708)

Please note: All products are "FOR RESEARCH USE ONLY. NOT FOR USE IN DIAGNOSTIC PROCEDURES"

Our Abpromise to you: Quality guaranteed and expert technical support

- Replacement or refund for products not performing as stated on the datasheet
- Valid for 12 months from date of delivery
- Response to your inquiry within 24 hours

- We provide support in Chinese, English, French, German, Japanese and Spanish
- Extensive multi-media technical resources to help you
- We investigate all quality concerns to ensure our products perform to the highest standards

If the product does not perform as described on this datasheet, we will offer a refund or replacement. For full details of the Abpromise, please visit <https://www.abcam.cn/abpromise> or contact our technical team.

Terms and conditions

- Guarantee only valid for products bought direct from Abcam or one of our authorized distributors