

Anti-Serum Amyloid A antibody [115] ab687

★★★★★ [6 Abreviews](#) [8 References](#) [2 图像](#)

概述

产品名称	Anti-Serum Amyloid A抗体[115]
描述	小鼠单克隆抗体[115] to Serum Amyloid A
宿主	Mouse
经测试应用	适用于: WB, Sandwich ELISA
种属反应性	与反应: Human
免疫原	Recombinant full length protein corresponding to Serum Amyloid A. Highly purified recombinant human serum amyloid A (MW: 12 kDa).
常规说明	<p>This product was changed from ascites to tissue culture supernatant on 6th March 2018. Please note that the dilutions may need to be adjusted accordingly. If you have any questions, please do not hesitate to contact our scientific support team.</p> <p>The Life Science industry has been in the grips of a reproducibility crisis for a number of years. Abcam is leading the way in addressing this with our range of recombinant monoclonal antibodies and knockout edited cell lines for gold-standard validation. Please check that this product meets your needs before purchasing.</p> <p>If you have any questions, special requirements or concerns, please send us an inquiry and/or contact our Support team ahead of purchase. Recommended alternatives for this product can be found below, along with publications, customer reviews and Q&As</p>

性能

形式	Liquid
存放说明	Shipped at 4°C. Upon delivery aliquot and store at -20°C or -80°C. Avoid repeated freeze / thaw cycles.
存储溶液	Constituent: PBS
纯化说明	Affinity purified from tissue culture supernatant.
克隆	单克隆
克隆编号	115
骨髓瘤	unknown
同种型	IgG1
轻链类型	kappa

应用

The Abpromise guarantee

Abpromise™ 承诺保证使用ab687于以下的经测试应用

“应用说明”部分 下显示的仅为推荐的起始稀释度;实际最佳的稀释度/浓度应由使用者检定。

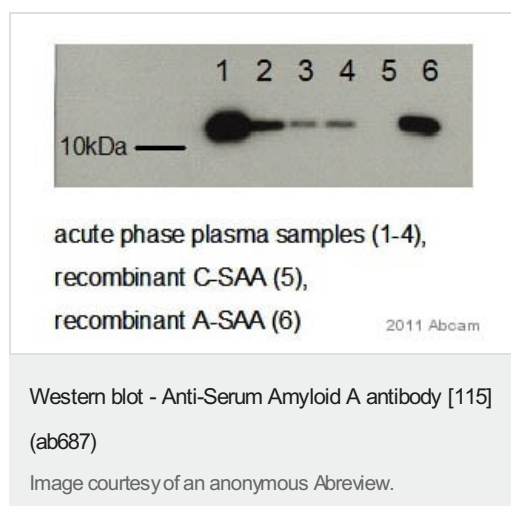
应用	Ab评论	说明
WB	★★★★★ (4)	Use at an assay dependent concentration. Use at an assay dependent dilution. This antibody, at a concentration of 0.1-0.5 µg/ml, will allow visualisation of 100 ng/lane of recombinant human SAA.
Sandwich ELISA		Use at an assay dependent concentration. sELISA compatible pair - ab18711 .

靶标

相关性

Function: Major acute phase reactant. Apolipoprotein of the HDL complex. Tissue specificity: Expressed by the liver; secreted in plasma. Disease: Note=Reactive, secondary amyloidosis is characterized by the extracellular accumulation in various tissues of the SAA protein. These deposits are highly insoluble and resistant to proteolysis; they disrupt tissue structure and compromise function. Note=Elevated serum SAA protein levels may be associated with lung cancer. Similarity: Belongs to the SAA family. PTM: This protein is the precursor of amyloid protein A, which is formed by the removal of approximately 24 residues from the C-terminal end.

图片



All lanes : Anti-Serum Amyloid A antibody [115] (ab687) at 1/4000 dilution

Lanes 1-4 : Acute phase plasma samples

Lane 5 : Recombinant C-SAA

Lane 6 : Recombinant A-SAA

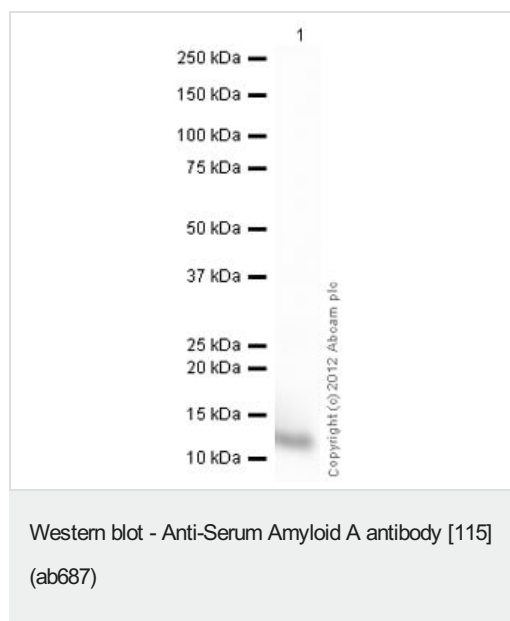
Lysates/proteins at 14 µg per lane.

Secondary

All lanes : Goat anti-mouse IgG-HRP at 1/10000 dilution

Developed using the ECL technique.

Exposure time: 5 seconds



Anti-Serum Amyloid A antibody [115] (ab687) at 0.5 µg/ml +
Recombinant human Serum Amyloid A (mutated D60N + H71R)
protein ([ab50232](#)) at 0.01 µg

Secondary

Goat Anti-Mouse IgG H&L (HRP) preadsorbed ([ab97040](#)) at
1/5000 dilution

Developed using the ECL technique.

Performed under reducing conditions.

Exposure time: 1 minute

Please note: All products are "FOR RESEARCH USE ONLY. NOT FOR USE IN DIAGNOSTIC PROCEDURES"

Our Abpromise to you: Quality guaranteed and expert technical support

- Replacement or refund for products not performing as stated on the datasheet
- Valid for 12 months from date of delivery
- Response to your inquiry within 24 hours
- We provide support in Chinese, English, French, German, Japanese and Spanish
- Extensive multi-media technical resources to help you
- We investigate all quality concerns to ensure our products perform to the highest standards

If the product does not perform as described on this datasheet, we will offer a refund or replacement. For full details of the Abpromise, please visit <https://www.abcam.cn/abpromise> or contact our technical team.

Terms and conditions

- Guarantee only valid for products bought direct from Abcam or one of our authorized distributors