

Anti-Serotonin antibody [YC5/45] ab6336

★★★★★ [3 Abreviews](#) [24 References](#) [3 图像](#)

概述

产品名称	Anti-Serotonin抗体[YC5/45]
描述	大鼠单克隆抗体[YC5/45] to Serotonin
宿主	Rat
经测试应用	适用于: IHC-Fr, IHC-P
种属反应性	与反应: Species independent
免疫原	Chemical/ Small Molecule corresponding to Serotonin conjugated to bovine serum albumin.
阳性对照	In IHC, this antibody gave a positive signal in a formalin-fixed, paraffin-embedded coronal section of Mouse Brain.
常规说明	<p>Useful for the diagnosis of carcinoid tumours and the investigation of the effects of drugs on the neurological system.</p> <p>The Life Science industry has been in the grips of a reproducibility crisis for a number of years. Abcam is leading the way in addressing this with our range of recombinant monoclonal antibodies and knockout edited cell lines for gold-standard validation. Please check that this product meets your needs before purchasing.</p> <p>If you have any questions, special requirements or concerns, please send us an inquiry and/or contact our Support team ahead of purchase. Recommended alternatives for this product can be found below, along with publications, customer reviews and Q&As</p>

性能

形式	Liquid
存放说明	Shipped at 4°C. Store at +4°C short term (1-2 weeks). Upon delivery aliquot. Store at -20°C or -80°C. Avoid freeze / thaw cycle.
存储溶液	pH: 7.40 Preservative: 0.05% Thimerosal (merthiolate)
纯度	Tissue culture supernatant
Primary antibody说明	Useful for the diagnosis of carcinoid tumours and the investigation of the effects of drugs on the neurological system.
克隆	单克隆
克隆编号	YC5/45

同种型 IgG2c
轻链类型 kappa

应用

The Abpromise guarantee **Abpromise™**承诺保证使用ab6336于以下的经测试应用

“应用说明”部分 下显示的仅为推荐的起始稀释度;实际最佳的稀释度/浓度应由使用者检定。

应用	Ab评论	说明
IHC-Fr	★★★★★ (2)	Use at an assay dependent concentration.
IHC-P	★★★★★ (1)	Use at an assay dependent concentration.

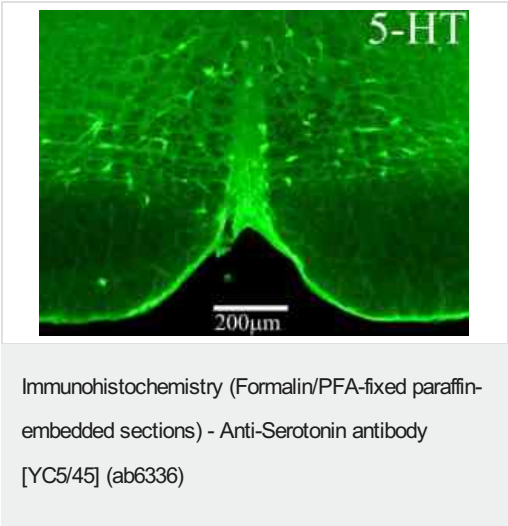
靶标

相关性

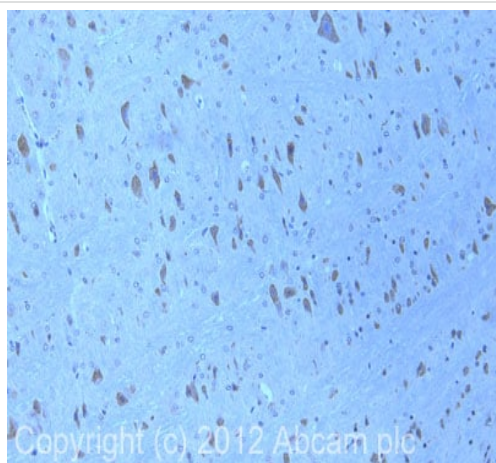
Serotonin (5-hydroxytryptamine, or 5-HT) is a monoamine neurotransmitter synthesised in serotonergic neurons in the central nervous system and enterochromaffin cells in the gastrointestinal tract. Serotonin plays an important part in the biochemistry of depression, migraine, bipolar disorder and anxiety. It is also believed to be influential on sexuality and appetite. 5-HT is generally thought not to be released from synaptic terminal buttons in the manner of classical neurotransmission but from serotonergic varicosities into the extra neuronal space. From here it is free to diffuse over a relatively large region of space (>20µm) and activate 5-HT receptors located on the dendrites, cell bodies and presynaptic terminals of adjacent neurons. Serotonergic action is terminated primarily via uptake of 5-HT from the synapse. This is through the specific monoamine transporter for 5-HT, 5-HT reuptake transporter, on the presynaptic neuron. The pharmacology of 5-HT is extremely complex, with its actions being mediated by a large and diverse range of 5-HT receptors.

细胞定位 Cytoplasmic and Secreted

图片



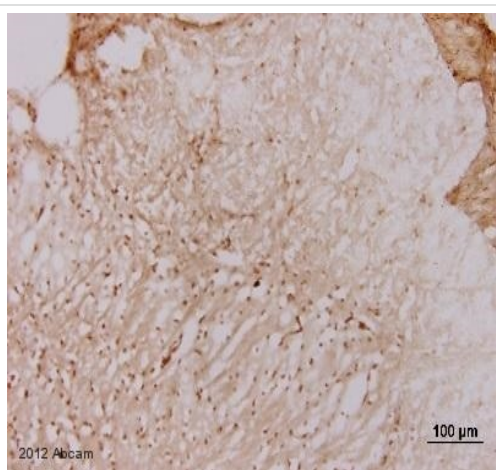
ab6336 in rat brain tissue fixed with 4% paraformaldehyde. The staining is appropriate, lighting up cell bodies, dendrites and terminals of known 5-HT containing neurones. These pictures are from the review provided by Jim Deuchars.



Immunohistochemistry (Formalin/PFA-fixed paraffin-embedded sections) - Anti-Serotonin antibody [YC5/45] (ab6336)

IHC image of Serotonin staining in mouse brain (coronal) formalin fixed paraffin embedded tissue section, performed on a Leica Bond™ system using the standard protocol F. The section was pre-treated using heat mediated antigen retrieval with sodium citrate buffer (pH6, epitope retrieval solution 1) for 20 mins. The section was then incubated with ab6336, 5µg/ml, for 15 mins at room temperature and detected using an HRP conjugated compact polymer system. DAB was used as the chromogen. The section was then counterstained with haematoxylin and mounted with DPX.

For other IHC staining systems (automated and non-automated) customers should optimize variable parameters such as antigen retrieval conditions, primary antibody concentration and antibody incubation times.



Immunohistochemistry (Frozen sections) - Anti-Serotonin antibody [YC5/45] (ab6336)

This image is courtesy of Ms. Szu-yu Liu by an abreview

Paraformaldehyde-fixed rabbit spinal cord tissue stained for Serotonin using ab6336 at 1/200 dilution in immunohistochemical analysis. Power Block™ Universal Blocking Reagent (Biogenex) was used as a blocking agent for 10 minute(s) at a concentration of 10% at 37°C. Biotin-SP-conjugated Goat Anti-Rat IgG was used as the secondary antibody at 1/500 dilution.

Please note: All products are "FOR RESEARCH USE ONLY. NOT FOR USE IN DIAGNOSTIC PROCEDURES"

Our Abpromise to you: Quality guaranteed and expert technical support

- Replacement or refund for products not performing as stated on the datasheet
- Valid for 12 months from date of delivery
- Response to your inquiry within 24 hours
- We provide support in Chinese, English, French, German, Japanese and Spanish
- Extensive multi-media technical resources to help you
- We investigate all quality concerns to ensure our products perform to the highest standards

If the product does not perform as described on this datasheet, we will offer a refund or replacement. For full details of the Abpromise, please visit <https://www.abcam.cn/abpromise> or contact our technical team.

Terms and conditions

- Guarantee only valid for products bought direct from Abcam or one of our authorized distributors