


Anti-SEN3 antibody [EP4360] ab124790

RabMAb

★★★★★ [2 Abreviews](#) [3 References](#) [1 图像](#)

概述

产品名称	Anti-SEN3抗体[EP4360]
描述	兔单克隆抗体[EP4360] to SEN3
宿主	Rabbit
经测试应用	适用于: WB 不适用于: Flow Cyt, ICC/IF, IHC-P or IP
种属反应性	与反应: Human 预测可用于: Mouse, Rat 
免疫原	Synthetic peptide within Human SEN3 aa 550-650 (C terminal). The exact sequence is proprietary.
阳性对照	MCF-7, Jurkat and HeLa cell lysates.
常规说明	Our RabMAb [®] technology is a patented hybridoma-based technology for making rabbit monoclonal antibodies. For details on our patents, please refer to RabMAb[®] patents . The Life Science industry has been in the grips of a reproducibility crisis for a number of years. Abcam is leading the way in addressing this with our range of recombinant monoclonal antibodies and knockout edited cell lines for gold-standard validation. Please check that this product meets your needs before purchasing. If you have any questions, special requirements or concerns, please send us an inquiry and/or contact our Support team ahead of purchase. Recommended alternatives for this product can be found below, along with publications, customer reviews and Q&As

性能

形式	Liquid
存放说明	Shipped at 4°C. Store at -20°C. Stable for 12 months at -20°C.
存储溶液	pH: 7.20 Preservative: 0.05% Sodium azide Constituents: 0.1% BSA, 40% Glycerol (glycerin, glycerine), 9.85% Tris glycine, 50% Tissue culture supernatant
纯度	Tissue culture supernatant

克隆

单克隆

克隆编号

EP4360

同种型

IgG

应用

The Abpromise guarantee

Abpromise™承诺保证使用ab124790于以下的经测试应用

“应用说明”部分 下显示的仅为推荐的起始稀释度;实际最佳的稀释度/浓度应由使用者检定。

应用	Ab评论	说明
WB	★★★★★ (2)	1/1000 - 1/10000. Predicted molecular weight: 65 kDa.

应用说明

Is unsuitable for Flow Cyt,ICC/IF,IHC-P or IP.

靶标

功能

Protease that releases SUMO2 and SUMO3 monomers from sumoylated substrates, but has only weak activity against SUMO1 conjugates. Deconjugates SUMO2 from MEF2D, which increases its transcriptional activation capability. Deconjugates SUMO2 and SUMO3 from CDCA8. Redox sensor that, when redistributed into nucleoplasm, can act as an effector to enhance HIF1A transcriptional activity by desumoylating EP300. Required for rRNA processing through deconjugation of SUMO2 and SUMO3 from nucleophosmin, NPM1. Plays a role in the regulation of sumoylation status of ZNF148. Functions as a component of the Five Friends of Methylated CHTOP (5FMC) complex; the 5FMC complex is recruited to ZNF148 by methylated CHTOP, leading to desumoylation of ZNF148 and subsequent transactivation of ZNF148 target genes.

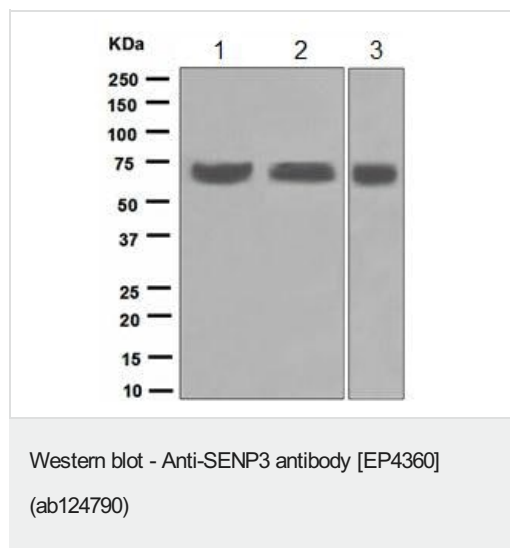
序列相似性

Belongs to the peptidase C48 family.

细胞定位

Cytoplasm. Nucleus > nucleolus. Nucleus > nucleoplasm. Mainly found in the nucleoplasm, with low levels detected in the cytoplasmic and chromatin fractions (By similarity). Redistributes between the nucleolus and the nucleoplasm in response to mild oxidative stress.

图片



All lanes : Anti-SEN3 antibody [EP4360] (ab124790) at 1/1000 dilution

Lane 1 : MCF-7 cell lysate

Lane 2 : Jurkat cell lysate

Lane 3 : HeLa cell lysate

Lysates/proteins at 10 µg per lane.

Secondary

All lanes : Goat anti-Rabbit HRP at 1/2000 dilution

Predicted band size: 65 kDa

Please note: All products are "FOR RESEARCH USE ONLY. NOT FOR USE IN DIAGNOSTIC PROCEDURES"

Our Abpromise to you: Quality guaranteed and expert technical support

- Replacement or refund for products not performing as stated on the datasheet
- Valid for 12 months from date of delivery
- Response to your inquiry within 24 hours
- We provide support in Chinese, English, French, German, Japanese and Spanish
- Extensive multi-media technical resources to help you
- We investigate all quality concerns to ensure our products perform to the highest standards

If the product does not perform as described on this datasheet, we will offer a refund or replacement. For full details of the Abpromise, please visit <https://www.abcam.cn/abpromise> or contact our technical team.

Terms and conditions

- Guarantee only valid for products bought direct from Abcam or one of our authorized distributors