

Anti-SEN2 antibody [EPR4356(2)] ab124724

重组 RabMAb

★★★★★ **1 Abreviews** **3 References** **4 图像**

概述

产品名称	Anti-SEN2抗体[EPR4356(2)]
描述	兔单克隆抗体[EPR4356(2)] to SEN2
宿主	Rabbit
经测试应用	适用于: WB, IHC-P 不适用于: Flow Cyt or IP
种属反应性	与反应: Human 不与反应: Mouse, Rat
免疫原	Synthetic peptide within Human SEN2 aa 350-450. The exact sequence is proprietary.
阳性对照	MDA-MB-435, NIH:OVCAR-3, and 293T cell lysates; Human colon tissue.
常规说明	This product is a recombinant monoclonal antibody, which offers several advantages including: <ul style="list-style-type: none"> - High batch-to-batch consistency and reproducibility - Improved sensitivity and specificity - Long-term security of supply - Animal-free production For more information see here . Our RabMAb [®] technology is a patented hybridoma-based technology for making rabbit monoclonal antibodies. For details on our patents, please refer to RabMAb[®] patents .

性能

形式	Liquid
存放说明	Shipped at 4°C. Store at -20°C. Stable for 12 months at -20°C.
存储溶液	pH: 7.20 Preservative: 0.05% Sodium azide Constituents: 40% Glycerol (glycerin, glycerine), 9.85% Tris glycine, 50% Tissue culture supernatant
纯度	Protein A purified
克隆	单克隆
克隆编号	EPR4356(2)

同种型IgG

应用

The Abpromise guarantee Abpromise™承诺保证使用ab124724于以下的经测试应用
“应用说明”部分 下显示的仅为推荐的起始稀释度;实际最佳的稀释度/浓度应由使用者检定。

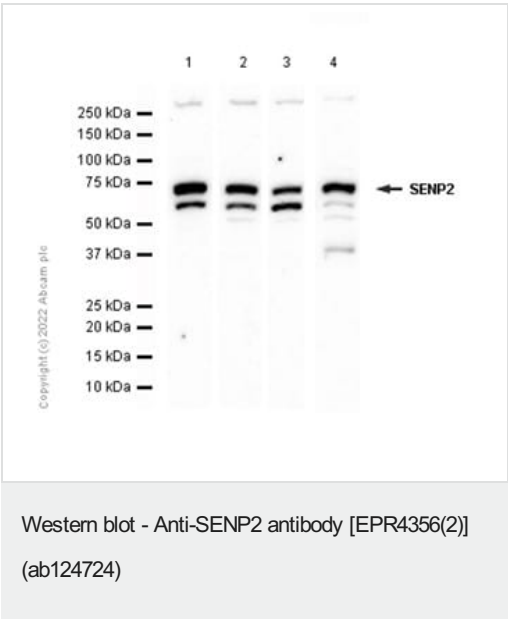
应用	Ab评论	说明
WB		1/10000. Detects a band of approximately 68 kDa (predicted molecular weight: 68 kDa).
IHC-P		1/500 - 1/1000. Perform heat mediated antigen retrieval before commencing with IHC staining protocol.

应用说明Is unsuitable for Flow Cyt or IP.

靶标

功能	Protease that catalyzes two essential functions in the SUMO pathway: processing of full-length SUMO1, SUMO2 and SUMO3 to their mature forms and deconjugation of SUMO1, SUMO2 and SUMO3 from targeted proteins. May down-regulate CTNNB1 levels and thereby modulate the Wnt pathway.
序列相似性	Belongs to the peptidase C48 family.
结构域	The N-terminus is necessary and sufficient for nuclear envelope targeting.
翻译后修饰	Polyubiquitinated; which leads to proteasomal degradation.
细胞定位	Nucleus > nuclear pore complex. Nucleus membrane. Cytoplasm. Shuttles between cytoplasm and nucleus.

图片



All lanes : Anti-SENP2 antibody [EPR4356(2)] (ab124724) at 1/10000 dilution

- Lane 1 : HeLa (Human cervix adenocarcinoma epithelial cell) whole cell lysate
- Lane 2 : MDA-MB-435S (Human breast adenocarcinoma epithelial cell) whole cell lysate
- Lane 3 : 293T (Human embryonic kidney epithelial cell) whole cell lysate
- Lane 4 : NIH: OVCAR-3 (Human ovary adenocarcinoma epithelial cell) whole cell lysate

Lysates/proteins at 15 µg per lane.

Secondary

All lanes : Goat Anti-Rabbit IgG H&L (HRP) ([ab97051](#)) at 1/20000 dilution

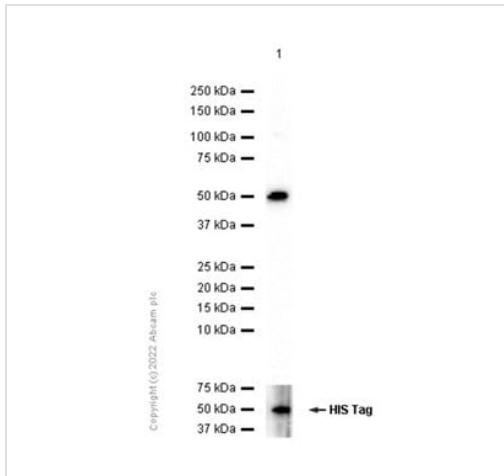
Predicted band size: 68 kDa

Observed band size: 68 kDa

Exposure time: 40 seconds

Blocking and diluting buffer: 5% NFDM/TBST

We are not sure how to define the extra band below band of interest.



Western blot - Anti-SEN2 antibody [EPR4356(2)] (ab124724)

Anti-SEN2 antibody [EPR4356(2)] (ab124724) at 1/10000 dilution
+ His-tagged human SENP2 recombinant protein (aa139-523)

Secondary

Goat Anti-Rabbit IgG H&L (HRP) ([ab97051](#)) at 1/20000 dilution

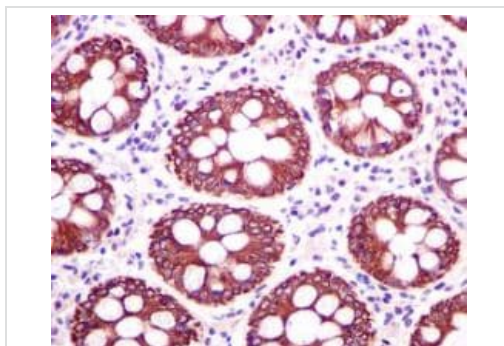
Predicted band size: 68 kDa

Observed band size: 46 kDa

Exposure time: 20 seconds

Blocking and diluting buffer: 5% NFDM/TBST

Lysate/protein at 0.01 µg per lane.



Immunohistochemistry (Formalin/PFA-fixed paraffin-embedded sections) - Anti-SEN2 antibody [EPR4356(2)] (ab124724)

ab124724, at 1/500 dilution, staining SENP2 in paraffin embedded Human colon tissue by immunohistochemistry.

Perform heat mediated antigen retrieval before commencing with IHC staining protocol.

Why choose a recombinant antibody?



Research with confidence
Consistent and reproducible results



Long-term and scalable supply
Recombinant technology



Success from the first experiment
Confirmed specificity



Ethical standards compliant
Animal-free production

Anti-SEN2 antibody [EPR4356(2)] (ab124724)

Please note: All products are "FOR RESEARCH USE ONLY. NOT FOR USE IN DIAGNOSTIC PROCEDURES"

Our Abpromise to you: Quality guaranteed and expert technical support

- Replacement or refund for products not performing as stated on the datasheet
- Valid for 12 months from date of delivery
- Response to your inquiry within 24 hours
- We provide support in Chinese, English, French, German, Japanese and Spanish
- Extensive multi-media technical resources to help you
- We investigate all quality concerns to ensure our products perform to the highest standards

If the product does not perform as described on this datasheet, we will offer a refund or replacement. For full details of the Abpromise, please visit <https://www.abcam.cn/abpromise> or contact our technical team.

Terms and conditions

- Guarantee only valid for products bought direct from Abcam or one of our authorized distributors