

### Anti-SEN1 antibody [EPR3844] ab108981

**重组 RabMAb**

★★★★★ **7 Abreviews** **39 References** **9 图像**

#### 概述

<b>产品名称</b>	Anti-SEN1抗体[EPR3844]
<b>描述</b>	兔单克隆抗体[EPR3844] to SEN1
<b>宿主</b>	Rabbit
<b>经测试应用</b>	<b>适用于:</b> Flow Cyt (Intra), ICC/IF, WB, IHC-P <b>不适用于:</b> IP
<b>种属反应性</b>	<b>与反应:</b> Human
<b>免疫原</b>	Synthetic peptide. This information is proprietary to Abcam and/or its suppliers.
<b>阳性对照</b>	WB: HeLa, HUVEC, Jurkat, Daudi and U87-MG cell lysates. IHC-P: Human testis tissue. ICC/IF: Jurkat cells. Flow Cyt (intra): HeLa cells.
<b>常规说明</b>	<p>This product is a recombinant monoclonal antibody, which offers several advantages including:</p> <ul style="list-style-type: none"> <li>- High batch-to-batch consistency and reproducibility</li> <li>- Improved sensitivity and specificity</li> <li>- Long-term security of supply</li> <li>- Animal-free production</li> </ul> <p>For more information <a href="#">see here</a>.</p> <p>Our RabMAb<sup>®</sup> technology is a patented hybridoma-based technology for making rabbit monoclonal antibodies. For details on our patents, please refer to <a href="#">RabMAb<sup>®</sup> patents</a>.</p> <p>Mouse, Rat: We have preliminary internal testing data to indicate this antibody may not react with these species. Please contact us for more information.</p>

#### 性能

<b>形式</b>	Liquid
<b>存放说明</b>	Shipped at 4°C. Store at +4°C short term (1-2 weeks). Upon delivery aliquot. Store at -20°C. Avoid freeze / thaw cycle.
<b>存储溶液</b>	pH: 7.20 Preservative: 0.01% Sodium azide Constituents: 50% Glycerol (glycerin, glycerine), 49% PBS, 0.05% BSA
<b>纯度</b>	Protein A purified

克隆	单克隆
克隆编号	EPR3844
同种型	IgG

## 应用

**The Abpromise guarantee** **Abpromise™**承诺保证使用ab108981于以下的经测试应用

“应用说明”部分下显示的仅为推荐的起始稀释度;实际最佳的稀释度/浓度应由使用者检定。

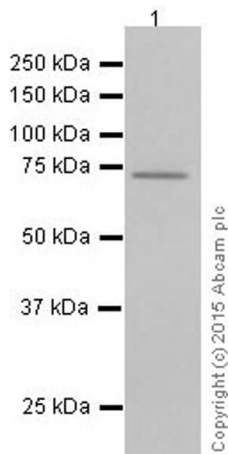
应用	Ab评论	说明
Flow Cyt (Intra)		1/20.
ICC/IF	★★★★★ (3)	1/100 - 1/500.
WB	★★★★★ (4)	1/1000 - 1/20000. Predicted molecular weight: 73 kDa.
IHC-P		1/100 - 1/300. Perform heat mediated antigen retrieval before commencing with IHC staining protocol. See <b>IHC antigen retrieval protocols</b> .

应用说明 Is unsuitable for IP.

## 靶标

功能	Protease that catalyzes two essential functions in the SUMO pathway: processing of full-length SUMO1, SUMO2 and SUMO3 to their mature forms and deconjugation of SUMO1, SUMO2 and SUMO3 from targeted proteins. Deconjugates SUMO1 from HIPK2. Deconjugates SUMO1 from HDAC1, which decreases its transcriptional repression activity.
组织特异性	Highly expressed in testis. Expressed at lower levels in thymus, pancreas, spleen, liver, ovary and small intestine.
序列相似性	Belongs to the peptidase C48 family.
细胞定位	Nucleus. Cytoplasm. Shuttles between cytoplasm and nucleus.

## 图片



Western blot - Anti-SENP1 antibody [EPR3844] (ab108981)

Anti-SENP1 antibody [EPR3844] (ab108981) at 1/20000 dilution (purified) + Daudi cell lysate at 10 µg

### Secondary

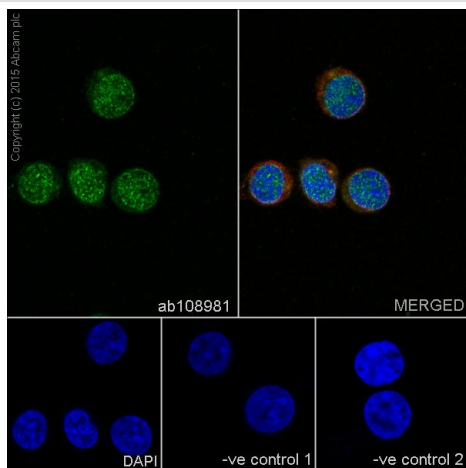
HRP goat anti-rabbit IgG (H+L) at 1/20000 dilution

**Predicted band size:** 73 kDa

**Observed band size:** 73 kDa

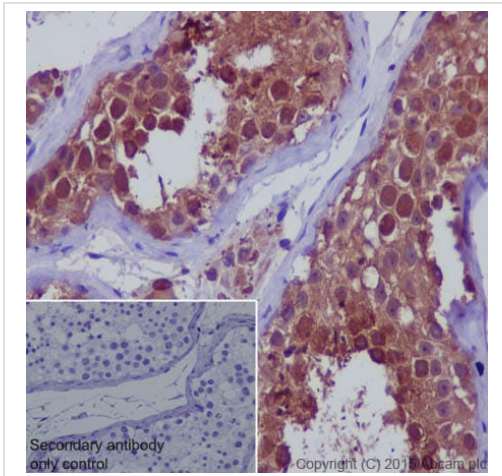
Blocking buffer: 5% NFDM/TBST

Dilution buffer: 5% NFDM/TBST



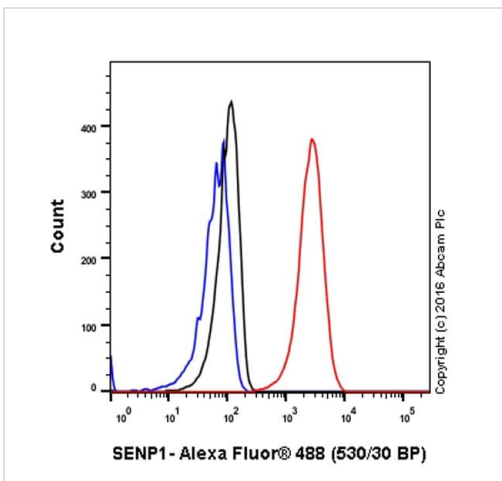
Immunocytochemistry/ Immunofluorescence - Anti-SENP1 antibody [EPR3844] (ab108981)

Immunofluorescence staining of Jurkat cells with purified ab108981 at a working dilution of 1/100, counter-stained with DAPI. The secondary antibody was Alexa Fluor<sup>®</sup> 488 goat anti-rabbit (**ab150077**), used at a dilution of 1/1000. **ab7291**, a mouse anti-tubulin antibody (1/1000), was used to stain tubulin along with **ab150120** (Alexa Fluor<sup>®</sup> 594 goat anti-mouse, 1/1000), shown in the top right hand panel. The cells were fixed in 4% PFA and permeabilized using 0.1% Triton X 100. The negative controls are shown in bottom middle and right hand panels - for negative control 1, purified ab108981 was used at a dilution of 1/500 followed by an Alexa Fluor<sup>®</sup> 594 goat anti-mouse antibody (**ab150120**) at a dilution of 1/500. For negative control 2, **ab7291** (mouse anti-tubulin) was used at a dilution of 1/500 followed by an Alexa Fluor<sup>®</sup> 488 goat anti-rabbit antibody (**ab150077**) at a dilution of 1/400.



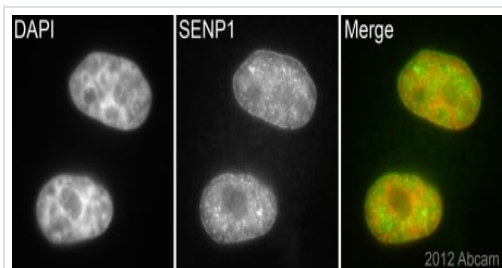
Immunohistochemical staining of paraffin embedded human testis with purified ab108981 at a working dilution of 1/300. The secondary antibody used is HRP goat anti-rabbit IgG H&L (**ab97051**) at 1/500. The sample is counter-stained with hematoxylin. Antigen retrieval was performed using Tris-EDTA buffer, pH 9.0. PBS was used instead of the primary antibody as the negative control, and is shown in the inset.

Immunohistochemistry (Formalin/PFA-fixed paraffin-embedded sections) - Anti-SENP1 antibody [EPR3844] (ab108981)



Intracellular Flow Cytometry analysis of HeLa cells labelling SENP1 with purified ab108981 at a dilution of 1/20 (red). Cells were fixed with 4% paraformaldehyde and permeabilized with 90% methanol. An Alexa Fluor<sup>®</sup> 488-conjugated goat anti-rabbit IgG (1/2000) was used as the secondary antibody. Black - Isotype control, rabbit monoclonal IgG. Blue - Unlabelled control, cells without incubation with primary and secondary antibodies.

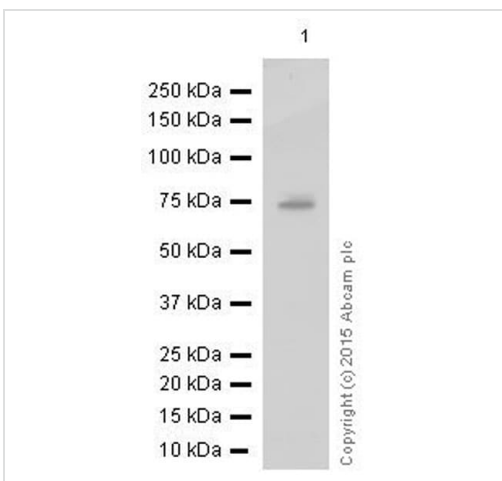
Flow Cytometry (Intracellular) - Anti-SENP1 antibody [EPR3844] (ab108981)



Immunocytochemistry/ Immunofluorescence - Anti-SENP1 antibody [EPR3844] (ab108981)

Image courtesy of an Abreview submitted by Dr. Kirk McManus, Univ. of Manitoba/Cancer Care MCB, Canada

Unpurified ab108981 (1/500) staining SENP1 in HeLa cells (green). Cells were fixed in paraformaldehyde, permeabilised with 0.5% Triton X-100/PBS and counterstained with DAPI in order to highlight the nucleus (red). For further experimental details please refer to Abreview.



Western blot - Anti-SENP1 antibody [EPR3844] (ab108981)

Anti-SENP1 antibody [EPR3844] (ab108981) at 1/20000 dilution (purified) + U87-MG cell lysate at 10 µg

**Secondary**

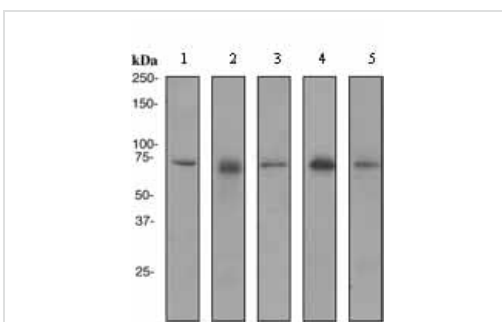
HRP goat anti-rabbit IgG (H+L) at 1/20000 dilution

**Predicted band size:** 73 kDa

**Observed band size:** 73 kDa

Blocking buffer: 5% NFDM/TBST

Dilution buffer: 5% NFDM/TBST



Western blot - Anti-SENP1 antibody [EPR3844] (ab108981)

**All lanes :** Anti-SENP1 antibody [EPR3844] (ab108981) at 1/1000 dilution (unpurified)

**Lane 1 :** HeLa cell lysates

**Lane 2 :** HUVEC cell lysates

**Lane 3 :** Jurkat cell lysates

**Lane 4 :** Daudi cell lysates

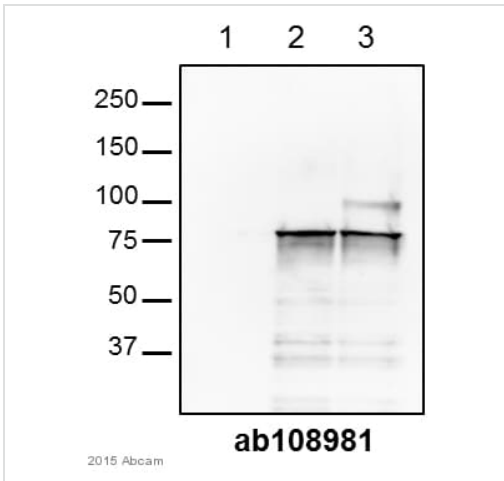
**Lane 5 :** U87-MG cell lysates

Lysates/proteins at 10 µg per lane.

**Secondary**

**All lanes :** Standard HRP labelled goat anti-rabbit at 1/2000 dilution

**Predicted band size:** 73 kDa



Western blot - Anti-SENP1 antibody [EPR3844] (ab108981)

This image is courtesy of an Abreview submitted by Ragnhild Eskeland

**All lanes :** Anti-SENP1 antibody [EPR3844] (ab108981) at 1/1000 dilution (unpurified)

**Lane 1 :** COS-1 cell lysate

**Lane 2 :** COS-1 cell lysate transfected with SENP1

**Lane 3 :** COS-1 cell lysate transfected with SENP1 mutant

Lysates/proteins at 20000 cells per lane.

**Secondary**

**All lanes :** HRP-conjugated donkey anti-rabbit IgG polyclonal at 1/10000 dilution

Developed using the ECL technique.

Performed under reducing conditions.

**Predicted band size:** 73 kDa




**Observed band size:** 75 kDa

**Exposure time:** 6 minutes

Blocked with 3% milk for 1 hour at 25°C.

Incubated with the primary antibody for 18 hours at 4°C.

Why choose a recombinant antibody?

 <p><b>Research with confidence</b> Consistent and reproducible results</p>	 <p><b>Long-term and scalable supply</b> Recombinant technology</p>
 <p><b>Success from the first experiment</b> Confirmed specificity</p>	 <p><b>Ethical standards compliant</b> Animal-free production</p>

Anti-SENP1 antibody [EPR3844] (ab108981)

**Please note:** All products are "FOR RESEARCH USE ONLY. NOT FOR USE IN DIAGNOSTIC PROCEDURES"

## **Our Abpromise to you: Quality guaranteed and expert technical support**

---

- Replacement or refund for products not performing as stated on the datasheet
- Valid for 12 months from date of delivery
- Response to your inquiry within 24 hours
  
- We provide support in Chinese, English, French, German, Japanese and Spanish
- Extensive multi-media technical resources to help you
- We investigate all quality concerns to ensure our products perform to the highest standards

If the product does not perform as described on this datasheet, we will offer a refund or replacement. For full details of the Abpromise, please visit <https://www.abcam.cn/abpromise> or contact our technical team.

## **Terms and conditions**

---

- Guarantee only valid for products bought direct from Abcam or one of our authorized distributors