

Anti-Semaphorin 7a antibody [MEM-150] ab8222

[4 References](#) [1 图像](#)

概述

产品名称	Anti-Semaphorin 7a抗体[MEM-150]
描述	小鼠单克隆抗体[MEM-150] to Semaphorin 7a
宿主	Mouse
特异性	Human CD108 (JMH blood group antigen).
经测试应用	适用于: Flow Cyt
种属反应性	与反应: Human
免疫原	Tissue, cells or virus corresponding to Human Semaphorin 7a. T cell line HPB-ALL
常规说明	<p>The Life Science industry has been in the grips of a reproducibility crisis for a number of years. Abcam is leading the way in addressing this with our range of recombinant monoclonal antibodies and knockout edited cell lines for gold-standard validation. Please check that this product meets your needs before purchasing.</p> <p>If you have any questions, special requirements or concerns, please send us an inquiry and/or contact our Support team ahead of purchase. Recommended alternatives for this product can be found below, along with publications, customer reviews and Q&As</p>

性能

形式	Liquid
存放说明	Shipped at 4°C. Store at +4°C short term (1-2 weeks). Store at -20°C or -80°C. Avoid freeze / thaw cycle.
存储溶液	pH: 8.0 Preservative: 0.097% Sodium azide Constituent: PBS
纯度	Proprietary Purification
纯化说明	Purified from TCS. Purified by precipitation and chromatography. Purity >95% by SDS-PAGE.
克隆	单克隆
克隆编号	MEM-150
骨髓瘤	unknown
同种型	IgM
轻链类型	unknown

应用

The Abpromise guarantee **Abpromise™**承诺保证使用ab8222于以下的经测试应用

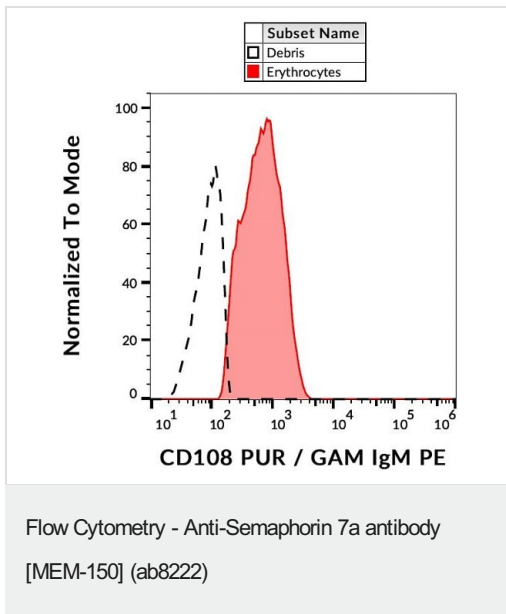
“应用说明”部分下显示的仅为推荐的起始稀释度;实际最佳的稀释度/浓度应由使用者检定。

应用	Ab评论	说明
Flow Cyt		Use a concentration of 4 µg/ml. ab91545 - Mouse monoclonal IgM, is suitable for use as an isotype control with this antibody.

靶标

功能	Plays an important role in integrin-mediated signaling and functions both in regulating cell migration and immune responses. Promotes formation of focal adhesion complexes, activation of the protein kinase PTK2/FAK1 and subsequent phosphorylation of MAPK1 and MAPK3. Promotes production of proinflammatory cytokines by monocytes and macrophages. Plays an important role in modulating inflammation and T-cell-mediated immune responses. Promotes axon growth in the embryonic olfactory bulb. Promotes attachment, spreading and dendrite outgrowth in melanocytes.
组织特异性	Detected in skin keratinocytes and on endothelial cells from skin blood vessels (at protein level). Expressed in fibroblasts, keratinocytes, melanocytes, placenta, testis, ovary, spleen, brain, spinal chord, lung, heart, adrenal gland, lymph nodes, thymus, intestine and kidney.
序列相似性	Belongs to the semaphorin family. Contains 1 Ig-like C2-type (immunoglobulin-like) domain. Contains 1 PSI domain. Contains 1 Sema domain.
细胞定位	Cell membrane. Detected in a punctate pattern on the cell membrane of basal and supra-basal skin keratinocytes.

图片



Flow cytometry of human peripheral blood cells with ab8222 at 3 µg/ml

Please note: All products are "FOR RESEARCH USE ONLY. NOT FOR USE IN DIAGNOSTIC PROCEDURES"

Our Abpromise to you: Quality guaranteed and expert technical support

- Replacement or refund for products not performing as stated on the datasheet
- Valid for 12 months from date of delivery
- Response to your inquiry within 24 hours
- We provide support in Chinese, English, French, German, Japanese and Spanish
- Extensive multi-media technical resources to help you
- We investigate all quality concerns to ensure our products perform to the highest standards

If the product does not perform as described on this datasheet, we will offer a refund or replacement. For full details of the Abpromise, please visit <https://www.abcam.cn/abpromise> or contact our technical team.

Terms and conditions

- Guarantee only valid for products bought direct from Abcam or one of our authorized distributors