


# Anti-Semaphorin 7a antibody ab23578

★★★★★ [2 Abreviews](#) [21 References](#) [2 图像](#)

### 概述

产品名称	Anti-Semaphorin 7a抗体
描述	兔多克隆抗体to Semaphorin 7a
宿主	Rabbit
特异性	ab23578 detects Semaphorin 7a protein at 75 kDa by WB. Semaphorin 7a is a protein that is tethered to the cell membrane via a GPI-anchor and is also glycosylated, therefore it is not surprising that in WB we see some additional bands at ~50 and 100 kDa which are likely to be cleavage fragments and glycosylated protein respectively. Preincubation with the immunizing peptide <a href="#">ab30844</a> is successful in blocking antibody staining.
经测试应用	<b>适用于:</b> WB, IP <b>不适用于:</b> ICC/IF
种属反应性	<b>与反应:</b> Mouse, Rat <b>预测可用于:</b> Cow 
免疫原	Synthetic peptide conjugated to KLH derived from within residues 1 - 100 of Mouse Semaphorin 7a. 参阅Abcam的 <a href="#">专有抗源政策</a> (Peptide available as <a href="#">ab30844</a> .)
阳性对照	WB: Mouse and rat brain tissue lysate. IP: Mouse brain tissue lysate.
常规说明	Negative control: HEK cells  The Life Science industry has been in the grips of a reproducibility crisis for a number of years. Abcam is leading the way in addressing this with our range of recombinant monoclonal antibodies and knockout edited cell lines for gold-standard validation. Please check that this product meets your needs before purchasing.  If you have any questions, special requirements or concerns, please send us an inquiry and/or contact our Support team ahead of purchase. Recommended alternatives for this product can be found below, along with publications, customer reviews and Q&As

### 性能

形式	Liquid
存放说明	Shipped at 4°C. Store at +4°C short term (1-2 weeks). Upon delivery aliquot. Store at -20°C or -80°C. Avoid freeze / thaw cycle.
存储溶液	pH: 7.40 Preservative: 0.02% Sodium azide

Constituent: PBS

Batches of this product that have a concentration < 1mg/ml may have BSA added as a stabilising agent. If you would like information about the formulation of a specific lot, please contact our scientific support team who will be happy to help.

**纯度** Immunogen affinity purified  
**克隆** 多克隆  
**同种型** IgG

## 应用

**The Abpromise guarantee** Abpromise™承诺保证使用ab23578于以下的经测试应用

“应用说明”部分 下显示的仅为推荐的起始稀释度;实际最佳的稀释度/浓度应由使用者检定。

应用	Ab评论	说明
WB		Use a concentration of 1 µg/ml. Detects a band of approximately 75, 90 kDa (predicted molecular weight: 75 kDa).
IP		Use at an assay dependent concentration.

**应用说明** Is unsuitable for ICC/IF.

## 靶标

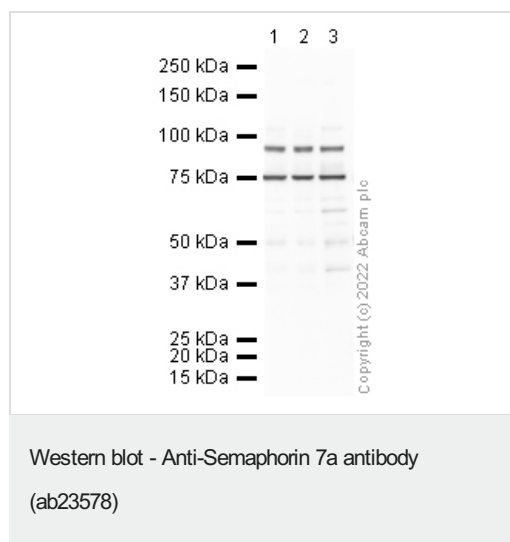
**功能** Plays an important role in integrin-mediated signaling and functions both in regulating cell migration and immune responses. Promotes formation of focal adhesion complexes, activation of the protein kinase PTK2/FAK1 and subsequent phosphorylation of MAPK1 and MAPK3. Promotes production of proinflammatory cytokines by monocytes and macrophages. Plays an important role in modulating inflammation and T-cell-mediated immune responses. Promotes axon growth in the embryonic olfactory bulb. Promotes attachment, spreading and dendrite outgrowth in melanocytes.

**组织特异性** Detected in skin keratinocytes and on endothelial cells from skin blood vessels (at protein level). Expressed in fibroblasts, keratinocytes, melanocytes, placenta, testis, ovary, spleen, brain, spinal chord, lung, heart, adrenal gland, lymph nodes, thymus, intestine and kidney.

**序列相似性** Belongs to the semaphorin family.  
Contains 1 Ig-like C2-type (immunoglobulin-like) domain.  
Contains 1 PSI domain.  
Contains 1 Sema domain.

**细胞定位** Cell membrane. Detected in a punctate pattern on the cell membrane of basal and supra-basal skin keratinocytes.

## 图片



**All lanes :** Anti-Semaphorin 7a antibody (ab23578) at 1 µg/ml

**Lane 1 :** Mouse brain tissue lysate

**Lane 2 :** Mouse cerebellum tissue lysate

**Lane 3 :** Rat brain tissue lysate

Lysates/proteins at 10 µg per lane.

### Secondary

**All lanes :** Goat polyclonal to Rabbit IgG - H&L - Pre-Adsorbed (HRP) at 1/50000 dilution

**Predicted band size:** 75 kDa

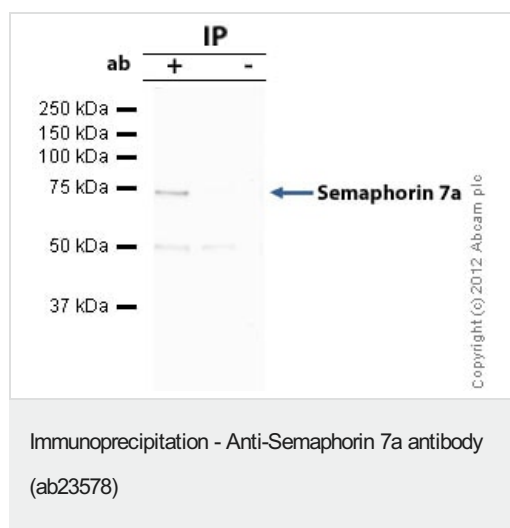
**Observed band size:** 75 kDa

**Additional bands at:** 90 kDa (possible glycosylated form)

**Exposure time:** 8 minutes

**Gel type:** MOPS

**Blocking buffer:** 2% BSA block



Semaphorin 7a was immunoprecipitated using 0.5mg Mouse Brain whole tissue lysate, 5µg of Rabbit polyclonal to Semaphorin 7a and 50µl of protein G magnetic beads (+). No antibody was added to the control (-).

The antibody was incubated under agitation with Protein G beads for 10min, Mouse Brain whole tissue lysate lysate diluted in RIPA buffer was added to each sample and incubated for a further 10min under agitation.

Proteins were eluted by addition of 40µl SDS loading buffer and incubated for 10min at 70°C; 10µl of each sample was separated on a SDS PAGE gel, transferred to a nitrocellulose membrane, blocked with 5% BSA and probed with ab23578.

Secondary: Mouse monoclonal [SB62a] Secondary Antibody to Rabbit IgG light chain (HRP) ([ab99697](#)).

Band: 75kDa: Semaphorin 7a.

**Please note:** All products are "FOR RESEARCH USE ONLY. NOT FOR USE IN DIAGNOSTIC PROCEDURES"

### **Our Abpromise to you: Quality guaranteed and expert technical support**

---

- Replacement or refund for products not performing as stated on the datasheet
- Valid for 12 months from date of delivery
- Response to your inquiry within 24 hours
  
- We provide support in Chinese, English, French, German, Japanese and Spanish
- Extensive multi-media technical resources to help you
- We investigate all quality concerns to ensure our products perform to the highest standards

If the product does not perform as described on this datasheet, we will offer a refund or replacement. For full details of the Abpromise, please visit <https://www.abcam.cn/abpromise> or contact our technical team.

### **Terms and conditions**

---

- Guarantee only valid for products bought direct from Abcam or one of our authorized distributors