




Anti-Semaphorin 3E antibody ab112886

★★★★★ [1 Abreviews](#) [2 References](#) [1 图像](#)

概述

产品名称	Anti-Semaphorin 3E抗体
描述	山羊多克隆抗体to Semaphorin 3E
宿主	Goat
经测试应用	适用于: IHC-P
种属反应性	与反应: Human 预测可用于: Mouse, Rat, Cow, Dog, Pig 
免疫原	Synthetic peptide: NGGRYGTTKDYPDD by a Cysteine residue linker, corresponding to internal sequence amino acids 387-400 of Human Semaphorin 3E (NP_036563.1).  Run BLAST with  Run BLAST with
阳性对照	Human Prostate tissue.
常规说明	<p>The Life Science industry has been in the grips of a reproducibility crisis for a number of years. Abcam is leading the way in addressing this with our range of recombinant monoclonal antibodies and knockout edited cell lines for gold-standard validation. Please check that this product meets your needs before purchasing.</p> <p>If you have any questions, special requirements or concerns, please send us an inquiry and/or contact our Support team ahead of purchase. Recommended alternatives for this product can be found below, along with publications, customer reviews and Q&As</p>

性能

形式	Liquid
存放说明	Shipped at 4°C. Upon delivery aliquot and store at -20°C. Avoid freeze / thaw cycles.
存储溶液	pH: 7.30 Preservative: 0.02% Sodium azide Constituents: 99% Tris buffered saline, 0.5% BSA
纯度	Immunogen affinity purified
纯化说明	ab112886 was purified from Goat serum by ammonium sulphate precipitation followed by antigen affinity chromatography using the immunizing peptide.

克隆 多克隆
同种型 IgG

应用

The Abpromise guarantee **Abpromise™**承诺保证使用ab112886于以下的经测试应用

“应用说明”部分 下显示的仅为推荐的起始稀释度;实际最佳的稀释度/浓度应由使用者检定。

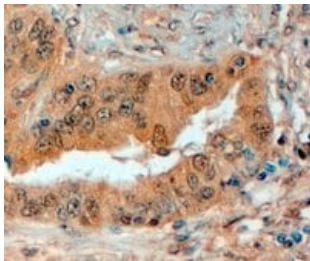
应用	Ab评论	说明
IHC-P	★★★★★ (1)	Use a concentration of 4 - 6 µg/ml. Perform heat mediated antigen retrieval with citrate buffer pH 6 before commencing with IHC staining protocol.

靶标

序列相似性 Belongs to the semaphorin family.
Contains 1 Ig-like C2-type (immunoglobulin-like) domain.
Contains 1 Sema domain.

细胞定位 Secreted.

图片



ab112886 at 4µg/ml showing membranous staining of Semaphorin 3E in the secretory cells of Paraffin-embedded Human Prostate tissue by Immunohistochemistry. Detection utilised HRP staining.

Immunohistochemistry (Formalin/PFA-fixed paraffin-embedded sections) - Anti-Semaphorin 3E antibody (ab112886)

Please note: All products are "FOR RESEARCH USE ONLY. NOT FOR USE IN DIAGNOSTIC PROCEDURES"

Our Abpromise to you: Quality guaranteed and expert technical support

- Replacement or refund for products not performing as stated on the datasheet
- Valid for 12 months from date of delivery
- Response to your inquiry within 24 hours
- We provide support in Chinese, English, French, German, Japanese and Spanish

- Extensive multi-media technical resources to help you
- We investigate all quality concerns to ensure our products perform to the highest standards

If the product does not perform as described on this datasheet, we will offer a refund or replacement. For full details of the Abpromise, please visit <https://www.abcam.cn/abpromise> or contact our technical team.

Terms and conditions

- Guarantee only valid for products bought direct from Abcam or one of our authorized distributors