


Anti-SEMA5A antibody ab51957

★★★★☆ [2 Abreviews](#) [1 References](#) [1 图像](#)

概述

产品名称	Anti-SEMA5A抗体
描述	山羊多克隆抗体to SEMA5A
宿主	Goat
经测试应用	适用于: IHC-P
种属反应性	与反应: Human 预测可用于: Mouse, Rat, Cow, Dog 
免疫原	Synthetic peptide corresponding to SEMA5A aa 91-110 (internal sequence). Sequence: DEATKKACYSKGKS Run BLAST with Run BLAST with
常规说明	<p>The Life Science industry has been in the grips of a reproducibility crisis for a number of years. Abcam is leading the way in addressing this with our range of recombinant monoclonal antibodies and knockout edited cell lines for gold-standard validation. Please check that this product meets your needs before purchasing.</p> <p>If you have any questions, special requirements or concerns, please send us an inquiry and/or contact our Support team ahead of purchase. Recommended alternatives for this product can be found below, along with publications, customer reviews and Q&As</p>

性能

形式	Liquid
存放说明	Shipped at 4°C. Upon delivery aliquot and store at -20°C or -80°C. Avoid repeated freeze / thaw cycles.
存储溶液	pH: 7.30 Preservative: 0.02% Sodium azide Constituents: 0.5% BSA, Tris buffered saline
纯度	Immunogen affinity purified
纯化说明	ab51957 was purified from goat serum by ammonium sulphate precipitation followed by antigen affinity chromatography using the immunizing peptide.
克隆	多克隆

应用

The Abpromise guarantee **Abpromise™**承诺保证使用ab51957于以下的经测试应用

“应用说明”部分 下显示的仅为推荐的起始稀释度;实际最佳的稀释度/浓度应由使用者检定。

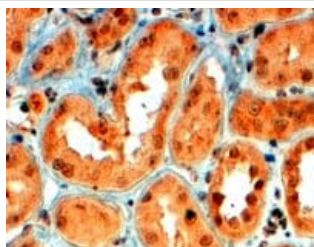
应用	Ab评论	说明
IHC-P		Use a concentration of 4 - 6 µg/ml.

靶标

相关性 Members of the semaphorin protein family are involved in axonal guidance during neural development. Semaphorin 5a is thought to have a bifunctional role in axon guidance, exerting both attractive and inhibitory effects on developing axons associated with limbic function. The thrombospondin repeats of Semaphorin 5a physically interact with both heparan sulfate proteoglycans and chondroitin sulfate proteoglycans, inducing attractive and inhibitory guidance cues, respectively. The biological responses to Semaphorin 5a are induced through binding to its high-affinity receptor, plexin B3, triggering intracellular signaling through Met.

细胞定位 Membrane; single-pass type I membrane protein

图片



ab51957 at 4µg/ml staining SEMA5A in Human kidney tissue by Immunohistochemistry (Formalin/PFA-fixed paraffin-embedded sections). Steamed antigen retrieval with citrate buffer pH 6 was performed. Antibody was detected by HRP-staining.

Immunohistochemistry (Formalin/PFA-fixed paraffin-embedded sections) - Anti-SEMA5A antibody (ab51957)

Please note: All products are "FOR RESEARCH USE ONLY. NOT FOR USE IN DIAGNOSTIC PROCEDURES"

Our Abpromise to you: Quality guaranteed and expert technical support

- Replacement or refund for products not performing as stated on the datasheet
- Valid for 12 months from date of delivery
- Response to your inquiry within 24 hours
- We provide support in Chinese, English, French, German, Japanese and Spanish

- Extensive multi-media technical resources to help you
- We investigate all quality concerns to ensure our products perform to the highest standards

If the product does not perform as described on this datasheet, we will offer a refund or replacement. For full details of the Abpromise, please visit <https://www.abcam.cn/abpromise> or contact our technical team.

Terms and conditions

- Guarantee only valid for products bought direct from Abcam or one of our authorized distributors