

Anti-SEMA4C/SEMAI antibody ab121334

4 图像

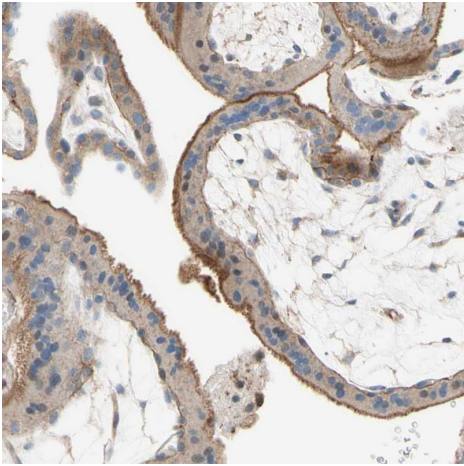
概述	
产品名称	Anti-SEMA4C/SEMAI抗体
描述	兔多克隆抗体to SEMA4C/SEMAI
宿主	Rabbit
经测试应用	适用于: IHC-P
种属反应性	与反应: Human
免疫原	Recombinant fragment corresponding to Human SEMA4C/SEMAI aa 172-294.
阳性对照	IHC-P: Human placenta, prostate and duodenum tissues.
常规说明	<p>The Life Science industry has been in the grips of a reproducibility crisis for a number of years. Abcam is leading the way in addressing this with our range of recombinant monoclonal antibodies and knockout edited cell lines for gold-standard validation. Please check that this product meets your needs before purchasing.</p> <p>If you have any questions, special requirements or concerns, please send us an inquiry and/or contact our Support team ahead of purchase. Recommended alternatives for this product can be found below, along with publications, customer reviews and Q&amp;As</p>
性能	
形式	Liquid
存放说明	Shipped at 4°C. Upon delivery aliquot and store at -20°C. Avoid repeated freeze / thaw cycles.
存储溶液	pH: 7.20 Preservative: 0.02% Sodium azide Constituents: 59% PBS, 40% Glycerol (glycerin, glycerine)
纯度	Immunogen affinity purified
克隆	多克隆
同种型	IgG
应用	

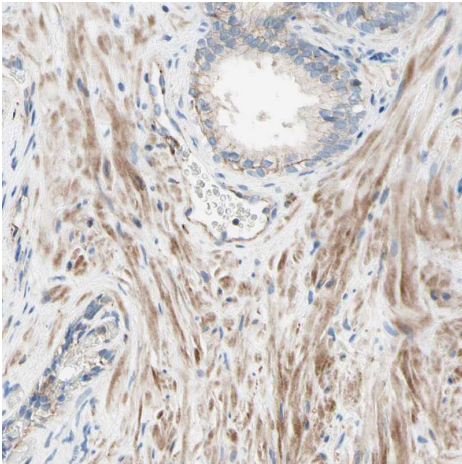
The Abpromise guarantee      **Abpromise™**承诺保证使用ab121334于以下的经测试应用

“应用说明”部分 下显示的仅为推荐的起始稀释度;实际最佳的稀释度/浓度应由使用者检定。

应用	Ab评论	说明
IHC-P		1/200 - 1/500. Perform heat mediated antigen retrieval with citrate buffer pH 6 before commencing with IHC staining protocol.

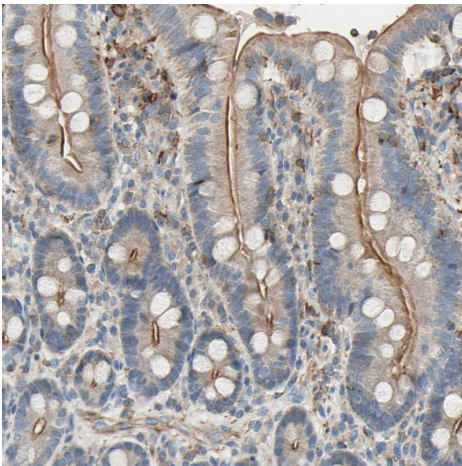
靶标	
功能	Probable signaling receptor which may play a role in myogenic differentiation through activation of the stress-activated MAPK cascade.
序列相似性	<p>Belongs to the semaphorin family.</p> <p>Contains 1 Ig-like C2-type (immunoglobulin-like) domain.</p> <p>Contains 1 PSI domain.</p> <p>Contains 1 Sema domain.</p>
细胞定位	Cell junction > synapse > postsynaptic cell membrane > postsynaptic density. Cytoplasmic vesicle > secretory vesicle > synaptic vesicle membrane.

图片	
	<p>Immunohistochemical analysis of human placenta tissue labeling SEMA4C/SEMAI with ab121334 at 1/500 dilution.</p>
<p>Immunohistochemistry (Formalin/PFA-fixed paraffin-embedded sections) - Anti-SEMA4C/SEMAI antibody (ab121334)</p>	



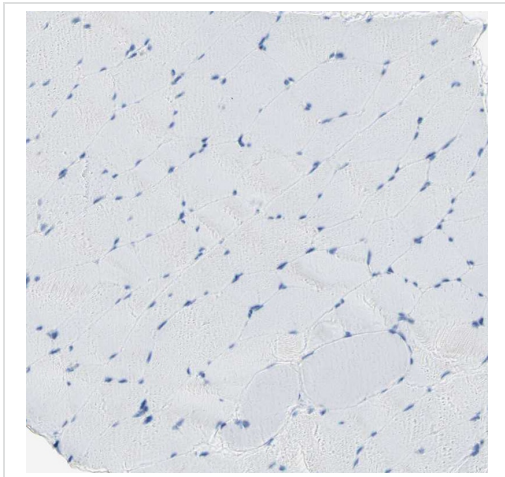
Immunohistochemical analysis of human prostate tissue labeling SEMA4C/SEMAI with ab121334 at 1/500 dilution.

Immunohistochemistry (Formalin/PFA-fixed paraffin-embedded sections) - Anti-SEMA4C/SEMAI antibody (ab121334)



Immunohistochemical analysis of human duodenum tissue labeling SEMA4C/SEMAI with ab121334 at 1/500 dilution.

Immunohistochemistry (Formalin/PFA-fixed paraffin-embedded sections) - Anti-SEMA4C/SEMAI antibody (ab121334)



Immunohistochemical analysis of human skeletal muscle tissue labeling SEMA4C/SEMAI with ab121334 at 1/500 dilution.

Immunohistochemistry (Formalin/PFA-fixed paraffin-embedded sections) - Anti-SEMA4C/SEMAI antibody (ab121334)

**Please note:** All products are "FOR RESEARCH USE ONLY. NOT FOR USE IN DIAGNOSTIC PROCEDURES"

### Our Abpromise to you: Quality guaranteed and expert technical support

---

- Replacement or refund for products not performing as stated on the datasheet
- Valid for 12 months from date of delivery
- Response to your inquiry within 24 hours
- We provide support in Chinese, English, French, German, Japanese and Spanish
- Extensive multi-media technical resources to help you
- We investigate all quality concerns to ensure our products perform to the highest standards

If the product does not perform as described on this datasheet, we will offer a refund or replacement. For full details of the Abpromise, please visit <https://www.abcam.cn/abpromise> or contact our technical team.

### Terms and conditions

---

- Guarantee only valid for products bought direct from Abcam or one of our authorized distributors