


Anti-SEMA4A antibody ab70178

[3 References](#) [2 图像](#)

概述

产品名称	Anti-SEMA4A抗体
描述	兔多克隆抗体to SEMA4A
宿主	Rabbit
经测试应用	适用于: WB, IHC-P
种属反应性	与反应: Human, African green monkey 预测可用于: Mouse, Rat 
免疫原	A synthesized peptide derived from the internal region of human SEMA4A.
常规说明	<p>The Life Science industry has been in the grips of a reproducibility crisis for a number of years. Abcam is leading the way in addressing this with our range of recombinant monoclonal antibodies and knockout edited cell lines for gold-standard validation. Please check that this product meets your needs before purchasing.</p> <p>If you have any questions, special requirements or concerns, please send us an inquiry and/or contact our Support team ahead of purchase. Recommended alternatives for this product can be found below, along with publications, customer reviews and Q&As</p>

性能

形式	Liquid
存放说明	Shipped at 4°C. Store at -20°C. Stable for 12 months at -20°C.
存储溶液	<p>pH: 7.40</p> <p>Preservative: 0.02% Sodium azide</p> <p>Constituents: 0.87% Sodium chloride, 50% Glycerol (glycerin, glycerine), PBS</p> <p>Without Mg2+ and Ca2+</p>
纯度	Immunogen affinity purified
纯化说明	The antibody was affinity-purified from rabbit antiserum by affinity-chromatography using epitope-specific immunogen.
克隆	多克隆
同种型	IgG

应用

The Abpromise guarantee Abpromise™承诺保证使用ab70178于以下的经测试应用

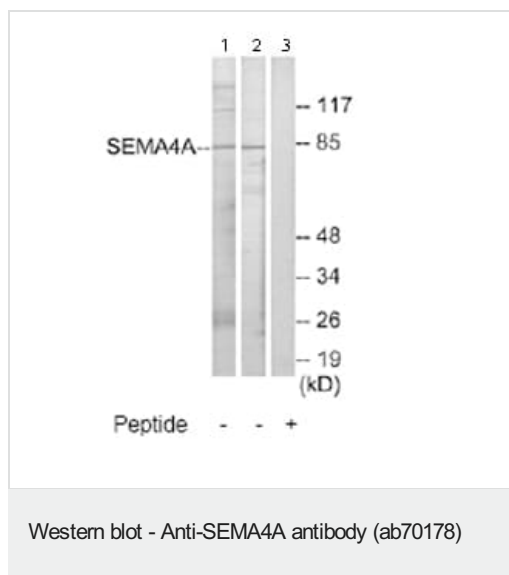
“应用说明”部分 下显示的仅为推荐的起始稀释度;实际最佳的稀释度/浓度应由使用者检定。

应用	Ab评论	说明
WB		1/500 - 1/1000. Predicted molecular weight: 84 kDa.
IHC-P		1/50 - 1/100.

靶标

功能	Inhibits axonal extension by providing local signals to specify territories inaccessible for growing axons.
疾病相关	<p>Defects in SEMA4A are the cause of retinitis pigmentosa type 35 (RP35) [MIM:610282]. RP leads to degeneration of retinal photoreceptor cells. Patients typically have night vision blindness and loss of midperipheral visual field. As their condition progresses, they lose their far peripheral visual field and eventually central vision as well.</p> <p>Defects in SEMA4A are the cause of cone-rod dystrophy type 10 (CORD10) [MIM:610283]. CORDs are inherited retinal dystrophies belonging to the group of pigmentary retinopathies. CORDs are characterized by retinal pigment deposits visible on fundus examination, predominantly in the macular region, and initial loss of cone photoreceptors followed by rod degeneration. This leads to decreased visual acuity and sensitivity in the central visual field, followed by loss of peripheral vision. Severe loss of vision occurs earlier than in retinitis pigmentosa.</p>
序列相似性	<p>Belongs to the semaphorin family.</p> <p>Contains 1 Ig-like C2-type (immunoglobulin-like) domain.</p> <p>Contains 1 PSI domain.</p> <p>Contains 1 Sema domain.</p>
细胞定位	Membrane.

图片



All lanes : Anti-SEMA4A antibody (ab70178) at 1/500 dilution

Lane 1 : Extracts from COS-7 cells

Lane 2 : Extracts from Jurkat cells

Lane 3 : Extracts from COS-7 cells with immunizing peptide at 10 µg

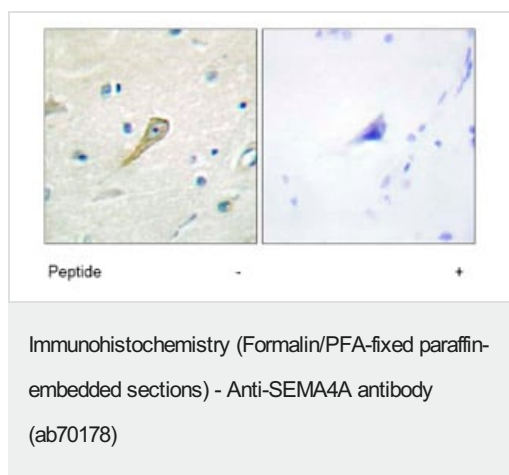
Lysates/proteins at 30 µg per lane.

Predicted band size: 84 kDa

Observed band size: 84 kDa

Additional bands at: 117 kDa, 26 kDa. We are unsure as to the identity of these extra bands.

One other band detected greater than 117 kDa.



Immunohistochemistry analysis of paraffin-embedded human brain tissue using ab70178 at 1/50-1/100 dilution.

Left image un-treated.

Right image treated with immunizing peptide.

Please note: All products are "FOR RESEARCH USE ONLY. NOT FOR USE IN DIAGNOSTIC PROCEDURES"

Our Abpromise to you: Quality guaranteed and expert technical support

- Replacement or refund for products not performing as stated on the datasheet
- Valid for 12 months from date of delivery
- Response to your inquiry within 24 hours
- We provide support in Chinese, English, French, German, Japanese and Spanish
- Extensive multi-media technical resources to help you
- We investigate all quality concerns to ensure our products perform to the highest standards

If the product does not perform as described on this datasheet, we will offer a refund or replacement. For full details of the Abpromise, please visit <https://www.abcam.cn/abpromise> or contact our technical team.

Terms and conditions

- Guarantee only valid for products bought direct from Abcam or one of our authorized distributors