

# Anti-SELK antibody ab121276

**1** [References](#)   **6** [图像](#)

### 概述

产品名称	Anti-SELK抗体
描述	兔多克隆抗体to SELK
宿主	Rabbit
经测试应用	适用于: IHC-P, WB, ICC
种属反应性	与反应: Human
免疫原	antigen sequence: KRRSYGNSSD SRYDDGRGPP GNPPRRMGRI NHLRGPS, corresponding to amino acids 48-84 of Human SELK. <a href="#">Run BLAST with</a> <a href="#">ExPASy</a> <a href="#">Run BLAST with</a> <a href="#">NCBI</a>
阳性对照	ICC/IF: U-251 MG cells. WB: HepG2 cell lysate. IHC: Human tonsil and salivary gland tissue.
常规说明	<p>The Life Science industry has been in the grips of a reproducibility crisis for a number of years. Abcam is leading the way in addressing this with our range of recombinant monoclonal antibodies and knockout edited cell lines for gold-standard validation. Please check that this product meets your needs before purchasing.</p> <p>If you have any questions, special requirements or concerns, please send us an inquiry and/or contact our Support team ahead of purchase. Recommended alternatives for this product can be found below, along with publications, customer reviews and Q&amp;As</p>

### 性能

形式	Liquid
存放说明	Shipped at 4°C. Upon delivery aliquot and store at -20°C. Avoid repeated freeze / thaw cycles.
存储溶液	pH: 7.20 Preservative: 0.02% Sodium azide Constituents: 59% PBS, 40% Glycerol
纯度	Immunogen affinity purified
克隆	多克隆
同种型	IgG

### 应用

The Abpromise guarantee

Abpromise™承诺保证使用ab121276于以下的经测试应用

“应用说明”部分 下显示的仅为推荐的起始稀释度;实际最佳的稀释度/浓度应由使用者检定。

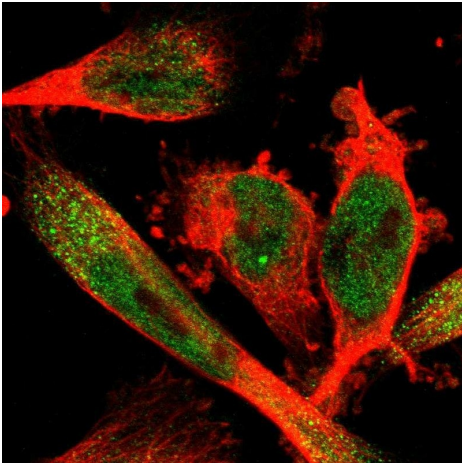
应用	Ab评论	说明
IHC-P		1/50 - 1/200. Perform heat mediated antigen retrieval with citrate buffer pH 6 before commencing with IHC staining protocol.
WB		Use a concentration of 0.04 - 0.4 µg/ml.
ICC		Use a concentration of 0.25 µg/ml.

靶标

序列相似性

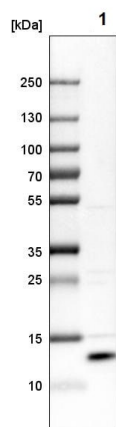
Belongs to the selenoprotein K family.

图片



Immunofluorescent staining of U-251 MG (Human brain glioma) cells labeling SELK with ab121276 at 0.25 ug/ml (green).

Immunocytochemistry - Anti-SELK antibody (ab121276)

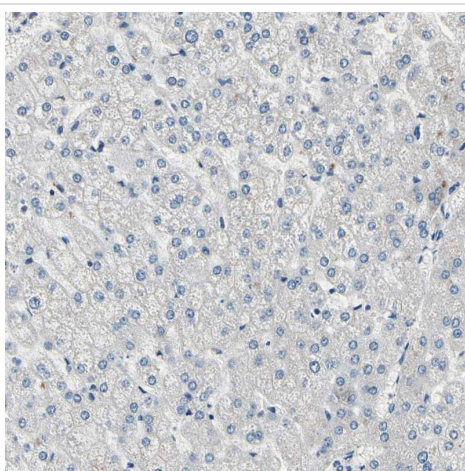


Western blot - Anti-SELK antibody (ab121276)

Anti-SELK antibody (ab121276) at 0.04  $\mu\text{g/ml}$  + HepG2 (Human liver hepatocellular carcinoma cell line) cell lysate

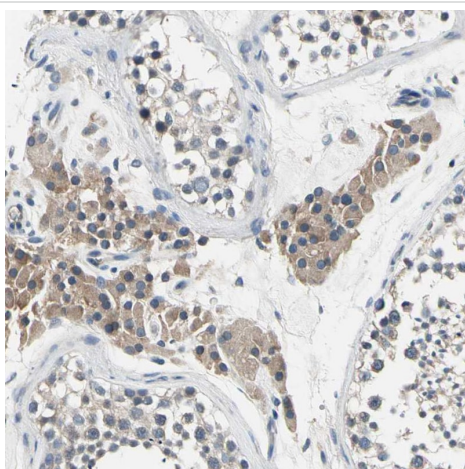
Performed under reducing conditions.

Western blot analysis of HepG2 cells labeling SELK with ab121276 at 0.04  $\mu\text{g/ml}$ .



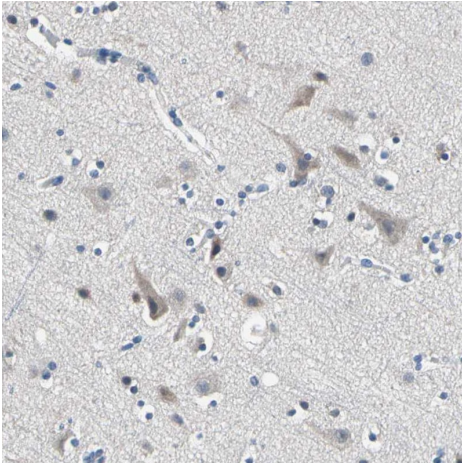
Immunohistochemistry (Formalin/PFA-fixed paraffin-embedded sections) - Anti-SELK antibody (ab121276)

ab121276 at 1/40 dilution staining SELK in Paraffin-embedded Human liver tissue by Immunohistochemistry.



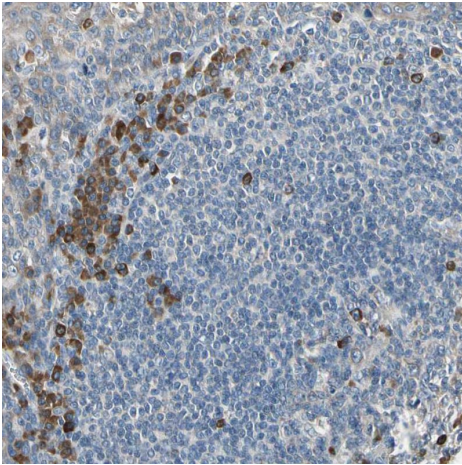
Immunohistochemistry (Formalin/PFA-fixed paraffin-embedded sections) - Anti-SELK antibody (ab121276)

ab121276 at 1/40 dilution staining SELK in Paraffin-embedded Human testis tissue by Immunohistochemistry.



ab121276 at 1/40 dilution staining SELK in Paraffin-embedded Human cerebral cortex tissue by Immunohistochemistry.

Immunohistochemistry (Formalin/PFA-fixed paraffin-embedded sections) - Anti-SELK antibody (ab121276)



ab121276 at 1/40 dilution staining SELK in Paraffin-embedded Human tonsil tissue by Immunohistochemistry.

Immunohistochemistry (Formalin/PFA-fixed paraffin-embedded sections) - Anti-SELK antibody (ab121276)

**Please note:** All products are "FOR RESEARCH USE ONLY. NOT FOR USE IN DIAGNOSTIC PROCEDURES"

### Our Abpromise to you: Quality guaranteed and expert technical support

- Replacement or refund for products not performing as stated on the datasheet
- Valid for 12 months from date of delivery
- Response to your inquiry within 24 hours
- We provide support in Chinese, English, French, German, Japanese and Spanish
- Extensive multi-media technical resources to help you
- We investigate all quality concerns to ensure our products perform to the highest standards

If the product does not perform as described on this datasheet, we will offer a refund or replacement. For full details of the Abpromise, please visit <https://www.abcam.cn/abpromise> or contact our technical team.

#### **Terms and conditions**

---

- Guarantee only valid for products bought direct from Abcam or one of our authorized distributors