

Anti-Seasonal and Swine H1N1 Neuraminidase antibody ab91645

3 图像

概述

产品名称	Anti-Seasonal and Swine H1N1 Neuraminidase抗体
描述	兔多克隆抗体to Seasonal and Swine H1N1 Neuraminidase
宿主	Rabbit
特异性	Recognizes the Neuraminidase from the both the Seasonal H1N1 Neuraminidase and Swine H1N1 Neuraminidase (A/California/14/2009 (H1N1)) in ELISA and WB. It will detect 2 ng of free peptide at 1 µg/mL.
经测试应用	适用于: ELISA, WB
种属反应性	与反应: Influenza A virus (A/Georgia/20/2006(H1N1)), Influenza A virus (A/California/14/2009(H1N1))
免疫原	Synthetic peptides from the Seasonal H1N1 Neuraminidase protein and the novel Swine H1N1 Neuraminidase protein (Genbank accession ACA33620 and ACQ76308).
阳性对照	ELISA: Seasonal and Swine H1N1 Neuraminidase peptides, Swine H1N1 Neuraminidase recombinant protein. WB: Swine H1N1 Neuraminidase recombinant protein.
常规说明	<p>The Life Science industry has been in the grips of a reproducibility crisis for a number of years. Abcam is leading the way in addressing this with our range of recombinant monoclonal antibodies and knockout edited cell lines for gold-standard validation. Please check that this product meets your needs before purchasing.</p> <p>If you have any questions, special requirements or concerns, please send us an inquiry and/or contact our Support team ahead of purchase. Recommended alternatives for this product can be found below, along with publications, customer reviews and Q&As</p>

性能

形式	Liquid
存放说明	Shipped at 4°C. Store at +4°C.
存储溶液	pH: 7.2 Preservative: 0.02% Sodium azide Constituent: PBS
纯度	Immunogen affinity purified

克隆

多克隆

同种型

IgG

应用

The Abpromise guarantee **Abpromise™**承诺保证使用ab91645于以下的经测试应用

“应用说明”部分 下显示的仅为推荐的起始稀释度;实际最佳的稀释度/浓度应由使用者检定。

应用	Ab评论	说明
ELISA		
WB		

应用说明

ELISA: Use at a concentration of 1 µg/ml.

Not yet tested in other applications.

Optimal dilutions/concentrations should be determined by the end user.

靶标

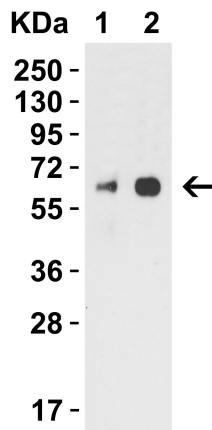
相关性

Influenza A virus is a major public health threat, killing more than 30,000 people per year in the USA. In early 2009, a novel swine-origin influenza A (H1N1) virus was identified in specimens obtained from patients in Mexico and the United States. Influenza A virus has one of sixteen possible Hemagglutinin (HA) surface proteins and one of nine possible neuraminidase (NA) surface proteins. The genetic make-up of this swine flu virus is unlike any other: it is an H1N1 strain that combines a triple assortment first identified in 1998 including human, swine, and avian influenza with two new pig H3N2 virus genes from Eurasia, themselves of recent human origin. The distinct antigenic properties of the new swine influenza virus compared with seasonal influenza A (H1N1) virus suggest that human immunity against new swine influenza virus is limited.

细胞定位

Cell Membrane

图片



Western blot - Anti-Seasonal and Swine H1N1
Neuraminidase antibody (ab91645)

All lanes : Anti-Seasonal and Swine H1N1 Neuraminidase
antibody (ab91645) at 2 µg/ml

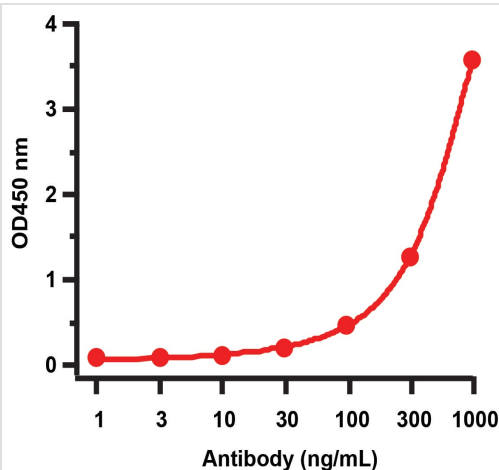
Lane 1 : 50 ng of Swine H1N1 Neuraminidase recombinant protein

Lane 2 : 100 ng of Swine H1N1 Neuraminidase recombinant
protein

Secondary

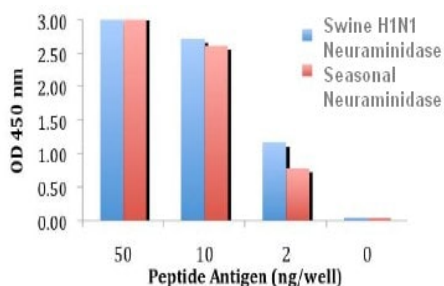
All lanes : Goat anti-rabbit IgG HRP conjugate at 1/10000 dilution

1h incubation at RT in 5% NFDM/TBST.



ELISA - Anti-Seasonal and Swine H1N1
Neuraminidase antibody (ab91645)

Validation with H1N1 NA Protein Coating Antigen: Swine H1N1
Neuraminidase recombinant protein, 2 µg/mL, incubated at 4°C
overnight. Detection Antibodies: ab91645, dilution: 1-1000 ng/mL,
incubated at RT for 1 hr. Secondary Antibodies: Goat anti-rabbit at
1/10000 dilution, incubated at RT for 1 hr.



ELISA - Anti-Seasonal and Swine H1N1
Neuraminidase antibody (ab91645)

ELISA using ab91645 at 1 µg/ml, detects 2 ng of free peptide
(Seasonal and Swine H1N1 Neuraminidase).

Please note: All products are "FOR RESEARCH USE ONLY. NOT FOR USE IN DIAGNOSTIC PROCEDURES"

Our Abpromise to you: Quality guaranteed and expert technical support

- Replacement or refund for products not performing as stated on the datasheet
- Valid for 12 months from date of delivery
- Response to your inquiry within 24 hours
- We provide support in Chinese, English, French, German, Japanese and Spanish
- Extensive multi-media technical resources to help you
- We investigate all quality concerns to ensure our products perform to the highest standards

If the product does not perform as described on this datasheet, we will offer a refund or replacement. For full details of the Abpromise, please visit <https://www.abcam.cn/abpromise> or contact our technical team.

Terms and conditions

- Guarantee only valid for products bought direct from Abcam or one of our authorized distributors