


### Anti-SDF1 antibody ab9797

★★★★☆ [14 Abreviews](#) [84 References](#) [4 图像](#)

#### 概述

产品名称	Anti-SDF1抗体
描述	兔多克隆抗体to SDF1
宿主	Rabbit
经测试应用	适用于: Sandwich ELISA, WB, IHC-P
种属反应性	与反应: Human, Recombinant fragment 预测可用于: Goat 
免疫原	Recombinant fragment corresponding to Human SDF1 aa 22-89. Sequence: KPVLSYRCP CRFFESHVAR ANVKHLKILN TPNCALQIVA RLKNNNRQVC IDPKLKWIQE YLEKALNK  Database link: <a href="#">P48061</a> <a href="#">Run BLAST with</a> <a href="#">Run BLAST with</a>
阳性对照	IHC-P: Human lung cancer and human kidney tissues; WB: Recombinant human SDF1 protein ( <a href="#">ab9798</a> ).
常规说明	Although some customers have been successful in IHC we no longer batch test in this application.  The Life Science industry has been in the grips of a reproducibility crisis for a number of years. Abcam is leading the way in addressing this with our range of recombinant monoclonal antibodies and knockout edited cell lines for gold-standard validation. Please check that this product meets your needs before purchasing.  If you have any questions, special requirements or concerns, please send us an inquiry and/or contact our Support team ahead of purchase. Recommended alternatives for this product can be found below, along with publications, customer reviews and Q&As

#### 性能

形式	Lyophilized:Reconstitute with 200µl of sterile water. Please note that if you receive this product in liquid form it has already been reconstituted as described and no further reconstitution is necessary.
存放说明	Shipped at 4°C. Store at +4°C short term (1-2 weeks). Upon delivery aliquot. Store at -20°C long term.

存储溶液	Constituent: PBS
	No preservative, sterile filtered
纯度	Immunogen affinity purified
克隆	多克隆
同种型	unknown
轻链类型	unknown

## 应用

**The Abpromise guarantee**      **Abpromise™**承诺保证使用ab9797于以下的经测试应用

“应用说明”部分 下显示的仅为推荐的起始稀释度;实际最佳的稀释度/浓度应由使用者检定。

应用	Ab评论	说明
<b>Sandwich ELISA</b>		Use a concentration of 0.5 - 2 µg/ml. Can be paired for Sandwich ELISA with <b>Biotin Rabbit polyclonal to SDF1 (ab84277)</b> . (using 100 µl/well antibody solution). This antigen affinity purified antibody, in conjunction with <b>ab84277</b> as a detection antibody, allows the detection of at least 0.2 - 0.4 ng/well of recombinant Human SDF1 alpha.
<b>WB</b>		Use at an assay dependent concentration. To detect hSDF-1a by Western Blot analysis this antibody can be used at a concentration of 0.1 - 0.2 µg/ml. Used in conjunction with compatible secondary reagents the detection limit for recombinant hSDF-1a is 1.5 - 3.0 ng/lane, under either reducing or non-reducing conditions.
<b>IHC-P</b>	★★★★☆ (8)	Use a concentration of 2 µg/ml. Perform heat mediated antigen retrieval before commencing with IHC staining protocol.

## 靶标

**功能**

Chemoattractant active on T-lymphocytes, monocytes, but not neutrophils. Activates the C-X-C chemokine receptor CXCR4 to induce a rapid and transient rise in the level of intracellular calcium ions and chemotaxis. Also binds to atypical chemokine receptor ACKR3, which activates the beta-arrestin pathway and acts as a scavenger receptor for SDF-1. SDF-1-beta(3-72) and SDF-1-alpha(3-67) show a reduced chemotactic activity. Binding to cell surface proteoglycans seems to inhibit formation of SDF-1-alpha(3-67) and thus to preserve activity on local sites. Acts as a positive regulator of monocyte migration and a negative regulator of monocyte adhesion via the LYN kinase. Stimulates migration of monocytes and T-lymphocytes through its receptors, CXCR4 and ACKR3, and decreases monocyte adherence to surfaces coated with ICAM-1, a ligand for beta-2 integrins. SDF1A/CXCR4 signaling axis inhibits beta-2 integrin LFA-1 mediated adhesion of monocytes to ICAM-1 through LYN kinase. Inhibits CXCR4-mediated infection by T-cell line-adapted HIV-1. Plays a protective role after myocardial infarction. Induces down-regulation and internalization of ACKR3 expressed in various cells. Has several critical functions during embryonic development; required for B-cell lymphopoiesis, myelopoiesis in bone marrow and heart ventricular septum formation.

**组织特异性**

Isoform Alpha and isoform Beta are ubiquitously expressed, with highest levels detected in liver, pancreas and spleen. Isoform Gamma is mainly expressed in heart, with weak expression detected in several other tissues. Isoform Delta, isoform Epsilon and isoform Theta have highest expression levels in pancreas, with lower levels detected in heart, kidney, liver and spleen.

**序列相似性**

Belongs to the intercrine alpha (chemokine CxC) family.

**发展阶段**

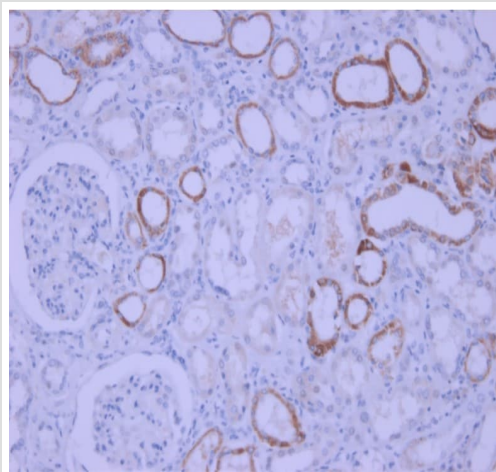
Isoform Alpha is ubiquitously expressed in fetal tissues. Isoform Beta and isoform Delta have more limited expression patterns, with highest levels detected in fetal spleen and fetal liver, respectively. Isoform Gamma and isoform Theta are weakly detected in fetal kidney.

**翻译后修饰**

Processed forms SDF-1-beta(3-72) and SDF-1-alpha(3-67) are produced after secretion by proteolytic cleavage of isoforms Beta and Alpha, respectively. The N-terminal processing is probably achieved by DPP4. Isoform Alpha is first cleaved at the C-terminus to yield a SDF-1-alpha(1-67) intermediate before being processed at the N-terminus. The C-terminal processing of isoform Alpha is reduced by binding to heparin and, probably, cell surface proteoglycans.

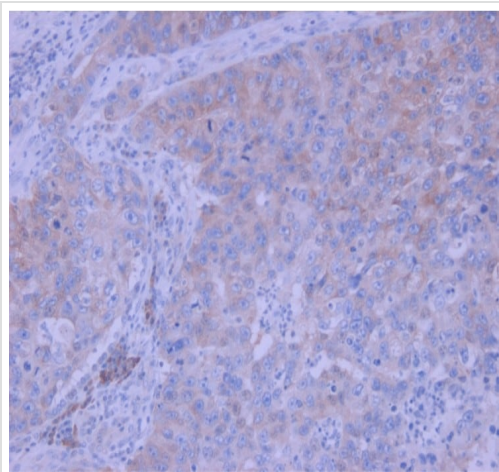
**细胞定位**

Secreted.

**图片**

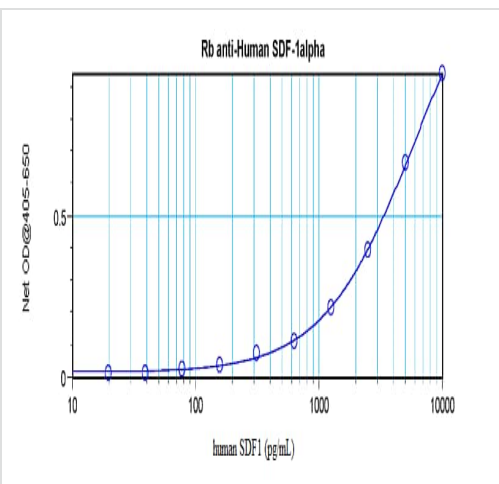
Immunohistochemistry (Formalin/PFA-fixed paraffin-embedded sections) analysis of human kidney tissue labelling SDF1 with ab9797 at 2 µg/mL (45 minute incubation at room temperature). Heat mediated antigen retrieval was performed using a buffer at pH 6. An HRP-labeled polymer detection system was used with a DAB chromogen.

Immunohistochemistry (Formalin/PFA-fixed paraffin-embedded sections) - Anti-SDF1 antibody (ab9797)



Immunohistochemistry (Formalin/PFA-fixed paraffin-embedded sections) - Anti-SDF1 antibody (ab9797)

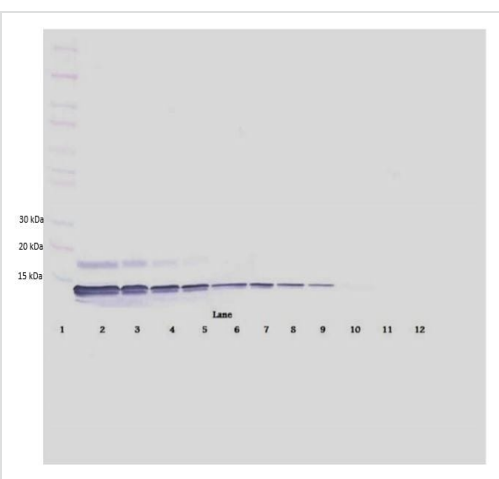
Immunohistochemistry (Formalin/PFA-fixed paraffin-embedded sections) analysis of human lung cancer tissue labelling SDF1 with ab9797 at 2 µg/mL (45 minute incubation at room temperature). Heat mediated antigen retrieval was performed using a buffer at pH 6. An HRP-labeled polymer detection system was used with a DAB chromogen.



Sandwich ELISA - Anti-SDF1 antibody (ab9797)

ELISA - Anti-IL-1 beta antibody (ab9797)

Sandwich ELISA detecting SDF1 using ab9797 at a concentration of 2.0 µg/ml.



Western blot - Anti-SDF1 antibody (ab9797)

To detect human SDSF1 by Western Blot analysis, **ab9739** can be used at a concentration of 0.1-0.2 µg/ml. When used in conjunction with compatible development reagents, the detection limit for recombinant human SDF1 is 1.5-3.0 ng/lane, under either reducing or non-reducing conditions.

**Lanes 1-11:** 250, 125, 62.5, 31.25, 15.625, 7.8, 3.9, 1.95, 0.975, 0.4875 and 0.24 ng recombinant human SDF1, respectively.

Non-reducing conditions.

**Please note:** All products are "FOR RESEARCH USE ONLY. NOT FOR USE IN DIAGNOSTIC PROCEDURES"

## **Our Abpromise to you: Quality guaranteed and expert technical support**

---

- Replacement or refund for products not performing as stated on the datasheet
- Valid for 12 months from date of delivery
- Response to your inquiry within 24 hours
  
- We provide support in Chinese, English, French, German, Japanese and Spanish
- Extensive multi-media technical resources to help you
- We investigate all quality concerns to ensure our products perform to the highest standards

If the product does not perform as described on this datasheet, we will offer a refund or replacement. For full details of the Abpromise, please visit <https://www.abcam.cn/abpromise> or contact our technical team.

## **Terms and conditions**

---

- Guarantee only valid for products bought direct from Abcam or one of our authorized distributors