


Anti-SCYL1 antibody ab95074

★★★★★ [1 Abreviews](#) [1 References](#) [2 图像](#)

概述

产品名称	Anti-SCYL1抗体
描述	兔多克隆抗体to SCYL1
宿主	Rabbit
经测试应用	适用于: WB, IP
种属反应性	与反应: Mouse, Human 预测可用于: Guinea pig, Chimpanzee, Rhesus monkey, Gorilla, Opossum, Orangutan, Elephant 
免疫原	Synthetic peptide, corresponding to a region between residues 758 and 808 of Human SCYL1 (NP_065731.3).
阳性对照	HeLa, 293T and NIH3T3 whole cell lysates.
常规说明	<p>The Life Science industry has been in the grips of a reproducibility crisis for a number of years. Abcam is leading the way in addressing this with our range of recombinant monoclonal antibodies and knockout edited cell lines for gold-standard validation. Please check that this product meets your needs before purchasing.</p> <p>If you have any questions, special requirements or concerns, please send us an inquiry and/or contact our Support team ahead of purchase. Recommended alternatives for this product can be found below, along with publications, customer reviews and Q&As</p>

性能

形式	Liquid
存放说明	Shipped at 4°C. Upon delivery aliquot and store at -20°C. Avoid freeze / thaw cycles.
存储溶液	pH: 6.8 Preservative: 0.09% Sodium azide Constituents: 0.1% BSA, Tris buffered saline
纯度	Immunogen affinity purified
纯化说明	ab95074 was affinity purified using an epitope specific to SCYL1 immobilized on solid support.
克隆	多克隆
同种型	IgG

应用

The Abpromise guarantee

Abpromise™ 承诺保证使用ab95074于以下的经测试应用

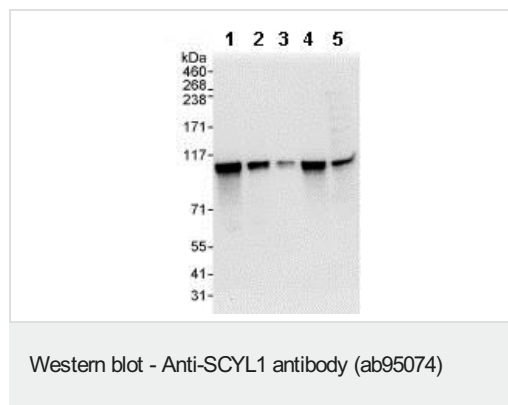
“应用说明”部分 下显示的仅为推荐的起始稀释度;实际最佳的稀释度/浓度应由使用者检定。

应用	Ab评论	说明
WB	★★★★★ (1)	1/2000 - 1/10000. Predicted molecular weight: 90 kDa.
IP		Use at 2-5 µg/mg of lysate.

靶标

功能	Regulates COPI-mediated retrograde traffic. Has no detectable kinase activity in vitro. Isoform 6 acts as transcriptional activator. It binds to three different types of GC-rich DNA binding sites (box-A, -B and -C) in the beta-polymerase promoter region. It also binds to the TERT promoter region.
组织特异性	Ubiquitous.
序列相似性	Belongs to the protein kinase superfamily. Contains 3 HEAT repeats. Contains 1 protein kinase domain.
结构域	The protein kinase domain is predicted to be catalytically inactive.
细胞定位	Nucleus; Cytoplasm > cytoskeleton > centrosome. Endoplasmic reticulum-Golgi intermediate compartment. Golgi apparatus > cis-Golgi network. Localized to the Endoplasmic reticulum-Golgi intermediate and cis-Golgi in an ARF1-independent manner; Cytoplasm. Cytoplasm > cytoskeleton > centrosome. Cytoplasmic during interphase and centrosomal during mitosis, it localizes to the centrosomes in a microtubule-independent manner and Cytoplasm. Cytoplasmic throughout the cell cycle.

图片



All lanes : Anti-SCYL1 antibody (ab95074) at 0.04 µg/ml

Lane 1 : HeLa whole cell lysate at 50 µg

Lane 2 : HeLa whole cell lysate at 15 µg

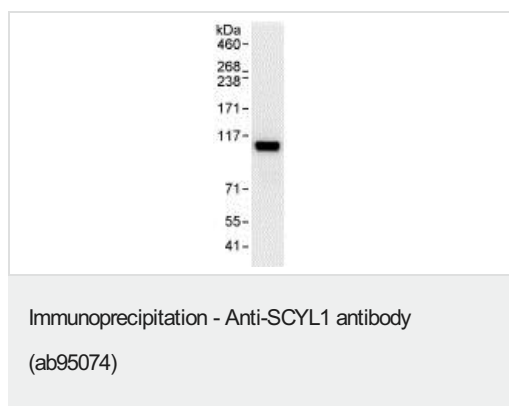
Lane 3 : HeLa whole cell lysate at 5 µg

Lane 4 : 293T whole cell lysate at 50 µg

Lane 5 : NIH3T3 whole cell lysate at 50 µg

Predicted band size: 90 kDa

Exposure time: 10 seconds



Detection of SCYL1 by Western Blot of Immunoprecipitate.
ab95074 at 1 µg/ml staining SCYL1 in HeLa whole cell lysate
immunoprecipitated using ab95074 at 3 µg/mg lysate (1 mg/IP; 20%
of IP loaded/lane).
Detection: Chemiluminescence with exposure time of 3 seconds.

Please note: All products are "FOR RESEARCH USE ONLY. NOT FOR USE IN DIAGNOSTIC PROCEDURES"

Our Abpromise to you: Quality guaranteed and expert technical support

- Replacement or refund for products not performing as stated on the datasheet
- Valid for 12 months from date of delivery
- Response to your inquiry within 24 hours
- We provide support in Chinese, English, French, German, Japanese and Spanish
- Extensive multi-media technical resources to help you
- We investigate all quality concerns to ensure our products perform to the highest standards

If the product does not perform as described on this datasheet, we will offer a refund or replacement. For full details of the Abpromise, please visit <https://www.abcam.cn/abpromise> or contact our technical team.

Terms and conditions

- Guarantee only valid for products bought direct from Abcam or one of our authorized distributors