

Anti-SCOP antibody ab89833

2 图像

概述

产品名称	Anti-SCOP抗体
描述	兔多克隆抗体to SCOP
宿主	Rabbit
经测试应用	适用于: WB, ICC/IF
种属反应性	与反应: Human 预测可用于: Horse, Chicken, Dog, Macaque monkey 
免疫原	Synthetic peptide. This information is proprietary to Abcam and/or its suppliers.
阳性对照	This antibody gave a positive signal in Human brain and Human brain membrane tissue lysates.
常规说明	<p>The Life Science industry has been in the grips of a reproducibility crisis for a number of years. Abcam is leading the way in addressing this with our range of recombinant monoclonal antibodies and knockout edited cell lines for gold-standard validation. Please check that this product meets your needs before purchasing.</p> <p>If you have any questions, special requirements or concerns, please send us an inquiry and/or contact our Support team ahead of purchase. Recommended alternatives for this product can be found below, along with publications, customer reviews and Q&As</p>

性能

形式	Liquid
存放说明	Shipped at 4°C. Store at +4°C short term (1-2 weeks). Upon delivery aliquot. Store at -20°C or -80°C. Avoid freeze / thaw cycle.
存储溶液	pH: 7.40 Preservative: 0.02% Sodium azide Constituent: PBS Batches of this product that have a concentration < 1mg/ml may have BSA added as a stabilising agent. If you would like information about the formulation of a specific lot, please contact our scientific support team who will be happy to help.
纯度	Immunogen affinity purified
克隆	多克隆
同种型	IgG

应用

The Abpromise guarantee **Abpromise™**承诺保证使用ab89833于以下的经测试应用

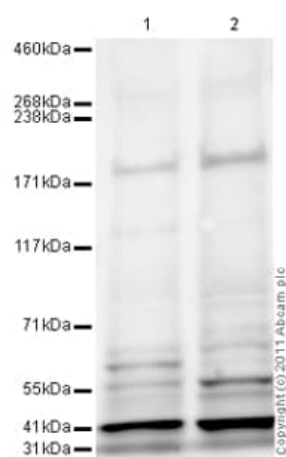
“应用说明”部分 下显示的仅为推荐的起始稀释度;实际最佳的稀释度/浓度应由使用者检定。

应用	Ab评论	说明
WB		Use a concentration of 1 µg/ml. Detects a band of approximately 185 kDa (predicted molecular weight: 185 kDa).
ICC/IF		Use a concentration of 10 µg/ml.

靶标

功能	Protein phosphatase that mediates dephosphorylation of 'Ser-473' of AKT1, 'Ser-660' of PRKCB isoform beta-II and 'Ser-657' of PRKCA. AKT1 regulates the balance between cell survival and apoptosis through a cascade that primarily alters the function of transcription factors that regulate pro- and antiapoptotic genes. Dephosphorylation of 'Ser-473' of AKT1 triggers apoptosis and suppression of tumor growth. Controls the phosphorylation of AKT2 and AKT3 more efficiently than that of AKT1. Dephosphorylation of PRKCA and PRKCB leads to their destabilization and degradation. Inhibits cancer cell proliferation and may act as a tumor suppressor. May act as a negative regulator of K-Ras signaling in membrane rafts.
组织特异性	In colorectal cancer tissue, expression is highest in the surface epithelium of normal colonic mucosa adjacent to the cancer tissue but is largely excluded from the crypt bases. Expression is lost or significantly decreased in 78% of tested tumors (at protein level). Ubiquitously expressed in non-cancerous tissues.
序列相似性	Contains 21 LRR (leucine-rich) repeats. Contains 1 PH domain. Contains 1 PP2C-like domain.
结构域	The PH domain is required for interaction with PRKCB and its dephosphorylation.
细胞定位	Cytoplasm. Membrane. Nucleus. In colorectal cancer tissue, expression is concentrated at the lateral membrane of epithelial cells.

图片



Western blot - Anti-SCOP antibody (ab89833)

All lanes : Anti-SCOP antibody (ab89833) at 1 µg/ml

Lane 1 : Human brain tissue lysate - total protein ([ab29466](#))

Lane 2 : Human brain normal tissue lysate - membrane extract ([ab29456](#))

Lysates/proteins at 20 µg per lane.

Secondary

All lanes : Goat Anti-Rabbit IgG H&L (HRP) preadsorbed ([ab97080](#)) at 1/5000 dilution

Developed using the ECL technique.

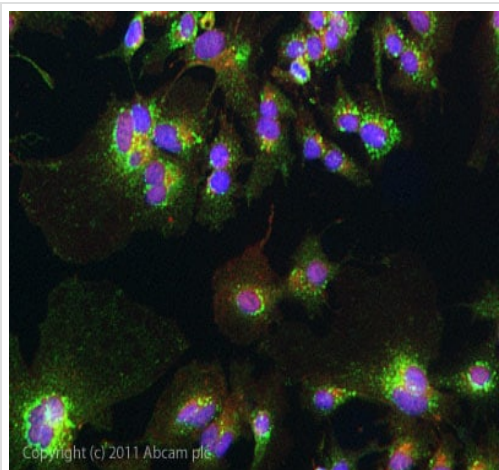
Performed under reducing conditions.

Predicted band size: 185 kDa

Observed band size: 185 kDa

Exposure time: 20 minutes

Abcam recommends using unheated lysates along with 20% Ethanol and 0.04% SDS within the transfer buffer to obtain a positive signal for this antibody. Abcam welcomes customer feedback and would appreciate any comments regarding this product and the data presented above.



Immunocytochemistry/ Immunofluorescence - Anti-SCOP antibody (ab89833)

ICC/IF image of ab89833 stained HepG2 cells. The cells were 4% formaldehyde fixed (10 min) and then incubated in 1%BSA / 10% normal goat serum / 0.3M glycine in 0.1% PBS-Tween for 1h to permeabilise the cells and block non-specific protein-protein interactions. The cells were then incubated with the antibody ab89833 at 10µg/ml overnight at +4°C. The secondary antibody (green) was DyLight® 488 goat anti- rabbit (**ab96899**) IgG (H+L) used at a 1/250 dilution for 1h. Alexa Fluor® 594 WGA was used to label plasma membranes (red) at a 1/200 dilution for 1h. DAPI was used to stain the cell nuclei (blue) at a concentration of 1.43µM.

Please note: All products are "FOR RESEARCH USE ONLY. NOT FOR USE IN DIAGNOSTIC PROCEDURES"

Our Abpromise to you: Quality guaranteed and expert technical support

- Replacement or refund for products not performing as stated on the datasheet
- Valid for 12 months from date of delivery
- Response to your inquiry within 24 hours
- We provide support in Chinese, English, French, German, Japanese and Spanish
- Extensive multi-media technical resources to help you
- We investigate all quality concerns to ensure our products perform to the highest standards

If the product does not perform as described on this datasheet, we will offer a refund or replacement. For full details of the Abpromise, please visit <https://www.abcam.cn/abpromise> or contact our technical team.

Terms and conditions

- Guarantee only valid for products bought direct from Abcam or one of our authorized distributors