

### Anti-SCO2 antibody ab115877

[4 References](#) [2 图像](#)

#### 概述

产品名称	Anti-SCO2抗体
描述	兔多克隆抗体to SCO2
宿主	Rabbit
经测试应用	适用于: IHC-P
种属反应性	与反应: Human
免疫原	Synthetic peptide conjugated to KLH, corresponding to 19 amino acids from near the C-terminus of Human SCO2.
阳性对照	IHC-P: Human Lung, Respiratory Epithelium and Human Kidney tissues
常规说明	<p>The Life Science industry has been in the grips of a reproducibility crisis for a number of years. Abcam is leading the way in addressing this with our range of recombinant monoclonal antibodies and knockout edited cell lines for gold-standard validation. Please check that this product meets your needs before purchasing.</p> <p>If you have any questions, special requirements or concerns, please send us an inquiry and/or contact our Support team ahead of purchase. Recommended alternatives for this product can be found below, along with publications, customer reviews and Q&amp;As</p>

#### 性能

形式	Liquid
存放说明	Shipped at 4°C. Upon delivery aliquot and store at -20°C. Avoid freeze / thaw cycles.
存储溶液	<p>pH: 7.4</p> <p>Preservative: 0.02% Sodium azide</p> <p>Constituent: 99% PBS</p>
克隆	多克隆
同种型	IgG

#### 应用

**The Abpromise guarantee** Abpromise™ 承诺保证使用ab115877于以下的经测试应用

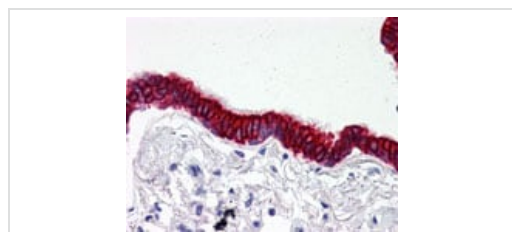
“应用说明”部分 下显示的仅为推荐的起始稀释度;实际最佳的稀释度/浓度应由使用者检定。

应用	Ab评论	说明
IHC-P		Use a concentration of 2.5 µg/ml. Perform heat mediated antigen retrieval with citrate buffer pH 6 before commencing with IHC staining protocol.

## 靶标

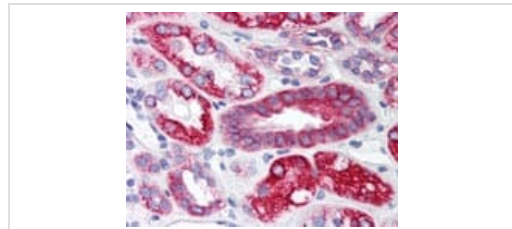
功能	Acts as a copper chaperone, transporting copper to the Cu(A) site on the cytochrome c oxidase subunit II (COX2).
组织特异性	Ubiquitous.
疾病相关	Defects in SCO2 are the cause of fatal infantile cardioencephalomyopathy with cytochrome c oxidase deficiency (FIC) [MIM:604377]. This disease is characterized by hypertrophic cardiomyopathy, lactic acidosis, and gliosis. Heart and skeletal muscle show reductions in cytochrome c oxidase (COX) activity, whereas liver and fibroblasts show mild COX deficiencies.
序列相似性	Belongs to the SCO1/2 family. Contains 1 thioredoxin domain.
细胞定位	Mitochondrion.

## 图片



Human Lung, Respiratory Epithelium (formalin-fixed, paraffin-embedded) stained with ab115877 at 2.5 ug/ml followed by biotinylated goat anti-rabbit IgG secondary antibody, alkaline phosphatase-streptavidin and chromogen.

Immunohistochemistry (Formalin/PFA-fixed paraffin-embedded sections) - Anti-SCO2 antibody (ab115877)



Human Kidney (formalin-fixed, paraffin-embedded) stained with ab115877 at 2.5 ug/ml followed by biotinylated goat anti-rabbit IgG secondary antibody, alkaline phosphatase-streptavidin and chromogen.

Immunohistochemistry (Formalin/PFA-fixed paraffin-embedded sections) - Anti-SCO2 antibody (ab115877)

**Please note:** All products are "FOR RESEARCH USE ONLY. NOT FOR USE IN DIAGNOSTIC PROCEDURES"

### **Our Abpromise to you: Quality guaranteed and expert technical support**

---

- Replacement or refund for products not performing as stated on the datasheet
- Valid for 12 months from date of delivery
- Response to your inquiry within 24 hours
  
- We provide support in Chinese, English, French, German, Japanese and Spanish
- Extensive multi-media technical resources to help you
- We investigate all quality concerns to ensure our products perform to the highest standards

If the product does not perform as described on this datasheet, we will offer a refund or replacement. For full details of the Abpromise, please visit <https://www.abcam.cn/abpromise> or contact our technical team.

### **Terms and conditions**

---

- Guarantee only valid for products bought direct from Abcam or one of our authorized distributors