

Anti-SCN4B antibody ab80539

★★★★★ [2 Abreviews](#) [11 References](#) [2 图像](#)

概述

产品名称

Anti-SCN4B抗体

描述

兔多克隆抗体to SCN4B

① 该产品是 **快线抗体**，通过亲和纯化得到。对抗原肽有高灵敏度及特异性(ELISA测试)。

[Read the terms of use »](#)

宿主

Rabbit

特异性

From Jan 2024, QC testing of replenishment batches of this polyclonal changed. All tested and expected application and reactive species combinations are still covered by our Abcam product promise. However, we no longer test all applications. For more information on a specific batch, please contact our Scientific Support who will be happy to help.

种属反应性

与反应: Rat, Human

预测可用于: Mouse, Cow 

免疫原

Synthetic peptide corresponding to Human SCN4B aa 200 to the C-terminus (C terminal) conjugated to keyhole limpet haemocyanin.
(Peptide available as [ab95413](#))

阳性对照

Brain (Human) Tissue Lysate; Brain (Rat) Tissue Lysate ; U-87 MG (Human glioblastoma astrocytoma) Whole Cell Lysate ; Spinal Cord (Human) Tissue Lysate; Spinal Cord (Rat) Tissue Lysate ; Skeletal Muscle (Human) Tissue Lysate

常规说明

The Life Science industry has been in the grips of a reproducibility crisis for a number of years. Abcam is leading the way in addressing this with our range of recombinant monoclonal antibodies and knockout edited cell lines for gold-standard validation. Please check that this product meets your needs before purchasing.

If you have any questions, special requirements or concerns, please send us an inquiry and/or contact our Support team ahead of purchase. Recommended alternatives for this product can be found below, along with publications, customer reviews and Q&As

性能

形式

Liquid

存放说明

Shipped at 4°C. Store at +4°C short term (1-2 weeks). Upon delivery aliquot. Store at -20°C or -80°C. Avoid freeze / thaw cycle.

存储溶液 pH: 7.40
Preservative: 0.02% Sodium azide
Constituent: PBS

Batches of this product that have a concentration < 1mg/ml may have BSA added as a stabilising agent. If you would like information about the formulation of a specific lot, please contact our scientific support team who will be happy to help.

纯度 Immunogen affinity purified
克隆 多克隆
同种型 IgG

应用

Fast track antibodies constitute a diverse group of products that have been released to accelerate your research, but are not yet fully characterized. They have all been affinity purified and show high titre values against the immunizing peptide (by ELISA).

Fast track terms of use

应用	Ab评论	说明
WB	★★★★★ (2)	Use at an assay dependent concentration. Predicted molecular weight: 25 kDa.
ICC/IF		Use at an assay dependent concentration.

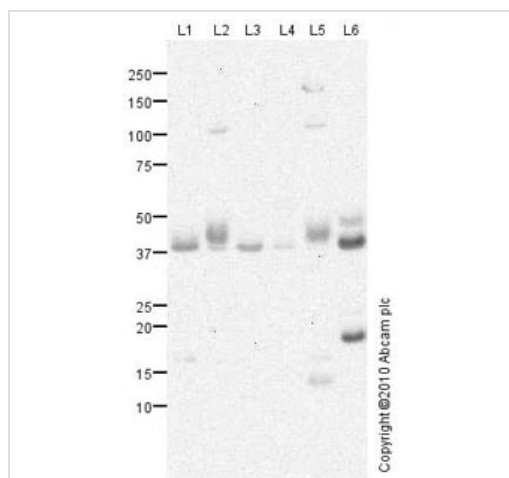
靶标

相关性 The SCN4B protein modulates channel gating kinetics. Causes negative shifts in the voltage dependence of activation of certain alpha sodium channels, but does not affect the voltage dependence of inactivation By similarity. The protein has been found to be expressed at a high level in dorsal root ganglia, at a lower level in brain, spinal cord, skeletal muscle and heart. Defects in SCN4B are the cause of long QT syndrome type 10 (LQT10) [MIM:611819]. Long QT syndromes are heart disorders characterized by a prolonged QT interval on the ECG and polymorphic ventricular arrhythmias. They cause syncope and sudden death in response to exercise or emotional stress. They can present with a sentinel event of sudden cardiac death in infancy.

细胞定位 Cell Membrane

图片

This Fast-Track antibody is not yet fully characterised. These images represent **inconclusive preliminary data**.



Western blot - Anti-SCN4B antibody (ab80539)

All lanes : Anti-SCN4B antibody (ab80539) at 1 µg/ml

Lane 1 : Human brain tissue lysate - total protein ([ab29466](#))

Lane 2 : Brain (Rat) Tissue Lysate

Lane 3 : U-87 MG (Human glioblastoma astrocytoma) Whole Cell Lysate

Lane 4 : Human spinal cord tissue lysate - total protein ([ab29188](#))

Lane 5 : Spinal Cord (Rat) Tissue Lysate

Lane 6 : Human skeletal muscle tissue lysate - total protein ([ab29330](#))

Lysates/proteins at 10 µg/ml per lane.

Secondary

All lanes : Goat polyclonal to Rabbit IgG - H&L - Pre-Adsorbed (HRP) at 1/3000 dilution

Developed using the ECL technique.

Performed under reducing conditions.

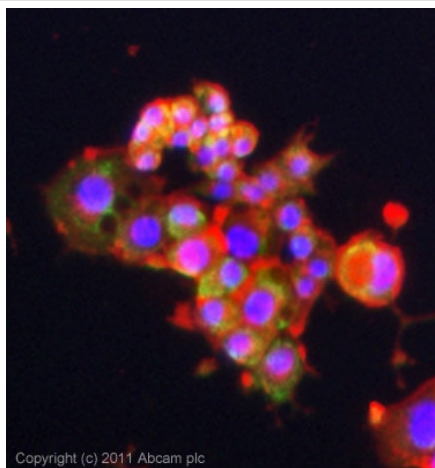
Predicted band size: 25 kDa

Observed band size: 37 kDa

Additional bands at: 20 kDa. We are unsure as to the identity of these extra bands.

Exposure time: 8 minutes

Further characterization on this product is underway. Abcam welcomes customer feedback and would appreciate any comments regarding this product and the data presented above. SCN4B contains at least three potential glycosylation sites (SwissProt), which may explain its migration at a higher molecular weight than predicted. The primary sequence contains a 30-residue signal sequence at the N-terminus. The band around 20-kDa in human skeletal muscle may be the unglycosylated form of the target protein.



Immunocytochemistry/ Immunofluorescence - Anti-SCN4B antibody (ab80539)

ICC/IF image of ab80539 stained PC12 cells. The cells were 4% formaldehyde (10 min) and then incubated in 1%BSA / 10% normal goat serum / 0.3M glycine in 0.1% PBS-Tween for 1h to permeabilise the cells and block non-specific protein-protein interactions. The cells were then incubated with the antibody (ab80539, 5µg/ml) overnight at +4°C. The secondary antibody (green) was [ab96899](#) Dylight 488 goat anti-rabbit IgG (H+L) used at a 1/250 dilution for 1h. Alexa Fluor® 594 WGA was used to label plasma membranes (red) at a 1/200 dilution for 1h. DAPI was used to stain the cell nuclei (blue) at a concentration of 1.43µM.

Please note: All products are "FOR RESEARCH USE ONLY. NOT FOR USE IN DIAGNOSTIC PROCEDURES"

Terms and conditions

- Guarantee only valid for products bought direct from Abcam or one of our authorized distributors