


### Anti-SCD1 antibody ab39969

敲除 验证

★★★★★ [1 Abreviews](#) [18 References](#) [4 图像](#)

#### 概述

产品名称	Anti-SCD1抗体
描述	兔多克隆抗体to SCD1
宿主	Rabbit
特异性	From Jan 2024, QC testing of replenishment batches of this polyclonal changed. All tested and expected application and reactive species combinations are still covered by our Abcam product promise. However, we no longer test all applications. For more information on a specific batch, please contact our Scientific Support who will be happy to help. You may also be interested in our alternative recombinant antibody, <a href="#">ab236868</a> .
经测试应用	适用于: ICC, WB
种属反应性	与反应: Human 预测可用于: Mouse, Pig 
免疫原	Synthetic peptide. This information is proprietary to Abcam and/or its suppliers.
阳性对照	WB: HeLa, HepG2 and HEK293 cell lysates. ICC: HeLa cells.
常规说明	<p>The Life Science industry has been in the grips of a reproducibility crisis for a number of years. Abcam is leading the way in addressing this with our range of recombinant monoclonal antibodies and knockout edited cell lines for gold-standard validation. Please check that this product meets your needs before purchasing.</p> <p>If you have any questions, special requirements or concerns, please send us an inquiry and/or contact our Support team ahead of purchase. Recommended alternatives for this product can be found below, along with publications, customer reviews and Q&amp;As</p>

#### 性能

形式	Liquid
存放说明	Shipped at 4°C. Store at +4°C short term (1-2 weeks). Upon delivery aliquot. Store at -20°C or -80°C. Avoid freeze / thaw cycle.
存储溶液	pH: 7.40 Preservative: 0.02% Sodium azide Constituent: PBS

Batches of this product that have a concentration < 1mg/ml may have BSA added as a stabilising agent. If you would like information about the formulation of a specific lot, please contact our scientific support team who will be happy to help.

**纯度** Immunogen affinity purified  
**克隆** 多克隆  
**同种型** IgG

## 应用

**The Abpromise guarantee** **Abpromise™**承诺保证使用ab39969于以下的经测试应用

“应用说明”部分 下显示的仅为推荐的起始稀释度;实际最佳的稀释度/浓度应由使用者检定。

应用	Ab评论	说明
ICC		Use a concentration of 5 µg/ml.
WB	★★★★★ (1)	Use a concentration of 2 µg/ml. Detects a band of approximately 37 kDa (predicted molecular weight: 41.5 kDa).

## 靶标

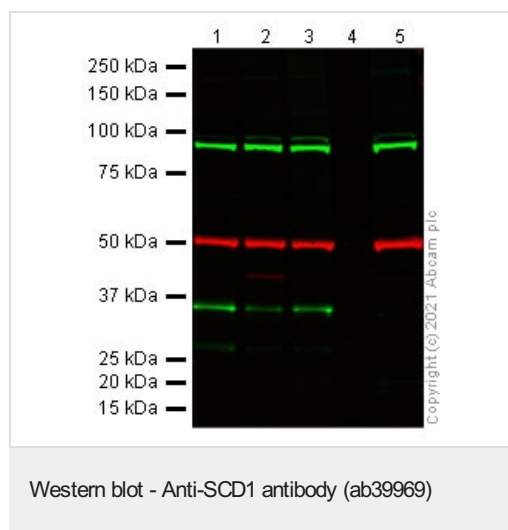
**功能** Terminal component of the liver microsomal stearyl-CoA desaturase system, that utilizes O<sub>2</sub> and electrons from reduced cytochrome b5 to catalyze the insertion of a double bond into a spectrum of fatty acyl-CoA substrates including palmitoyl-CoA and stearyl-CoA.

**序列相似性** Belongs to the fatty acid desaturase family.

**结构域** The histidine box domains may contain the active site and/or be involved in metal ion binding.

**细胞定位** Endoplasmic reticulum membrane.

## 图片



**All lanes** : Anti-SCD1 antibody (ab39969) at 1 µg/ml

**Lane 1** : HepG2 (human liver hepatocellular carcinoma cell line) whole cell lysate at 20 µg

**Lane 2** : HEK-293 (human epithelial cell line from embryonic kidney) whole cell lysate at 20 µg

**Lane 3** : Wild-type HeLa (human epithelial cell line from cervix adenocarcinoma) whole cell lysate at 20 µg

**Lane 4** : Empty Lane

**Lane 5** : SCD knockout HeLa whole cell lysate at 20 µg

### Secondary

**All lanes** : Goat anti-Rabbit IgG H&L (IRDye® 800CW)

preadsorbed at 1/10000 dilution

Performed under reducing conditions.

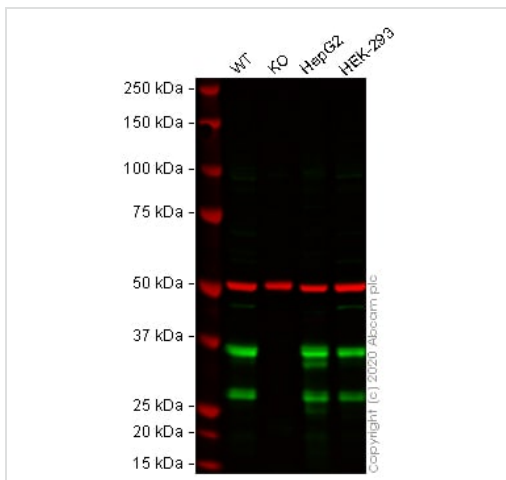
**Predicted band size:** 41.5 kDa

**Observed band size:** 36 kDa

**Additional bands at:** 95 kDa. We are unsure as to the identity of these extra bands.

This blot was produced using a 4-12% Bis-tris gel under the MOPS buffer system. The gel was run at 200V for 50 minutes before being transferred onto a Nitrocellulose membrane at 30V for 70 minutes. The membrane was then blocked for an hour using 3% Milk before being incubated with ab39969 overnight at 4°C. Antibody binding was detected using an anti-rabbit antibody conjugated to IRDye® 800CW (green).

**Loading control:** alpha Tubulin **ab7291** at 0.1 µg/mL visualised using a Goat anti-Mouse IgG H&L (IRDye® 680RD, red).



Western blot - Anti-SCD1 antibody (ab39969)

**All lanes :** Anti-SCD1 antibody (ab39969) at 2 µg/ml

**Lane 1 :** Wild-type HeLa cell lysate

**Lane 2 :** SCD knockout HeLa cell lysate

**Lane 3 :** HepG2 cell lysate

**Lane 4 :** HEK-293 cell lysate

Lysates/proteins at 20 µg per lane.

Performed under reducing conditions.

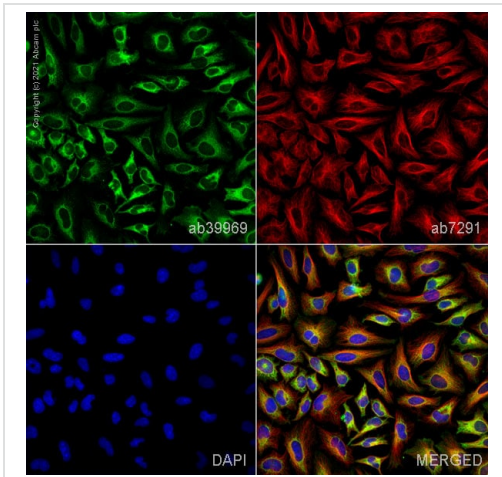
**Predicted band size:** 41.5 kDa

**Observed band size:** 36 kDa

**Lanes 1 - 4:** Merged signal (red and green). Green - ab39969 observed at 36 kDa. Red - loading control **ab7291** (Mouse anti-Alpha Tubulin [DM1A]) observed at 55kDa.

ab39969 was shown to react with SCD1 in wild-type HeLa cells in western blot with loss of signal observed in SCD1 knockout cell line **ab265220** (SCD1 knockout cell lysate **ab257658**). Wild-type and SCD1 knockout HeLa cell lysates were subjected to SDS-PAGE.

Membranes were blocked in 3% milk in TBS-T (0.1% Tween<sup>®</sup>) before incubation with ab39969 and **ab7291** (Mouse anti-Alpha Tubulin [DM1A]) overnight at 4°C at 2 µg/ml and a 1 in 20000 dilution respectively. Blots were incubated with Goat anti-Rabbit IgG H&L (IRDye<sup>®</sup> 800CW) preabsorbed (**ab216773**) and Goat anti-Mouse IgG H&L (IRDye<sup>®</sup> 680RD) preabsorbed (**ab216776**) secondary antibodies at 1 in 20000 dilution for 1 hour at room temperature before imaging.



Immunocytochemistry - Anti-SCD1 antibody (ab39969)

ab39969 staining SCD1 in HeLa cells. The cells were fixed with 100% methanol (5 min), permeabilized with 0.1% PBS-Triton X-100 for 5 minutes and then blocked with 1% BSA/10% normal goat serum/0.3M glycine in 0.1% PBS-Tween for 1h. The cells were then incubated overnight at 4°C with ab39969 at 5 µg/ml and **ab7291**, Mouse monoclonal [DM1A] to alpha Tubulin - Loading Control. Cells were then incubated with **ab150081**, Goat polyclonal Secondary Antibody to Rabbit IgG - H&L (Alexa Fluor<sup>®</sup> 488), pre-adsorbed at 1/1000 dilution (shown in green) and **ab150120**, Goat polyclonal Secondary Antibody to Mouse IgG - H&L (Alexa Fluor<sup>®</sup> 594), pre-adsorbed at 1/1000 dilution (shown in pseudocolour red). Nuclear DNA was labelled with DAPI (shown in blue).

Also suitable in cells fixed with 4% paraformaldehyde (10 min).

Image was acquired with a high-content analyser (Operetta CLS, Perkin Elmer) and a maximum intensity projection of confocal sections is shown.



Western blot - Anti-SCD1 antibody (ab39969)

**All lanes** : Anti-SCD1 antibody (ab39969) at 2 µg/ml

**Lane 1** : HEK293 (Human embryonic kidney cell line) Whole Cell Lysate

**Lane 2** : HepG2 (Human hepatocellular liver carcinoma cell line) Whole Cell Lysate

Lysates/proteins at 15 µg per lane.

### Secondary

**All lanes** : Goat polyclonal to Rabbit IgG - H&L - Pre-Adsorbed (HRP) at 1/3000 dilution

Performed under reducing conditions.

**Predicted band size:** 41.5 kDa

**Observed band size:** 37 kDa

**Please note:** All products are "FOR RESEARCH USE ONLY. NOT FOR USE IN DIAGNOSTIC PROCEDURES"

### **Our Abpromise to you: Quality guaranteed and expert technical support**

---

- Replacement or refund for products not performing as stated on the datasheet
- Valid for 12 months from date of delivery
- Response to your inquiry within 24 hours
  
- We provide support in Chinese, English, French, German, Japanese and Spanish
- Extensive multi-media technical resources to help you
- We investigate all quality concerns to ensure our products perform to the highest standards

If the product does not perform as described on this datasheet, we will offer a refund or replacement. For full details of the Abpromise, please visit <https://www.abcam.cn/abpromise> or contact our technical team.

### **Terms and conditions**

---

- Guarantee only valid for products bought direct from Abcam or one of our authorized distributors