


Anti-SATB2 antibody ab34735

★★★★★ [2 Abreviews](#) [80 References](#) [1 图像](#)

概述

产品名称	Anti-SATB2抗体
描述	兔多克隆抗体to SATB2
宿主	Rabbit
经测试应用	适用于: WB
种属反应性	与反应: Mouse 预测可用于: Rat, Human 
免疫原	Synthetic peptide conjugated to KLH derived from within residues 700 to the C-terminus of Mouse SATB2. 参阅Abcam的专有抗源政策 (Peptide available as ab34906 .)
常规说明	<p>The Life Science industry has been in the grips of a reproducibility crisis for a number of years. Abcam is leading the way in addressing this with our range of recombinant monoclonal antibodies and knockout edited cell lines for gold-standard validation. Please check that this product meets your needs before purchasing.</p> <p>If you have any questions, special requirements or concerns, please send us an inquiry and/or contact our Support team ahead of purchase. Recommended alternatives for this product can be found below, along with publications, customer reviews and Q&As</p>

性能

形式	Liquid
存放说明	Shipped at 4°C. Store at +4°C short term (1-2 weeks). Upon delivery aliquot. Store at -20°C or -80°C. Avoid freeze / thaw cycle.
存储溶液	<p>pH: 7.40</p> <p>Preservative: 0.02% Sodium azide</p> <p>Constituent: PBS</p> <p>Batches of this product that have a concentration < 1mg/ml may have BSA added as a stabilising agent. If you would like information about the formulation of a specific lot, please contact our scientific support team who will be happy to help.</p>
纯度	Immunogen affinity purified
克隆	多克隆
同种型	IgG

应用

The Abpromise guarantee

Abpromise™承诺保证使用ab34735于以下的经测试应用

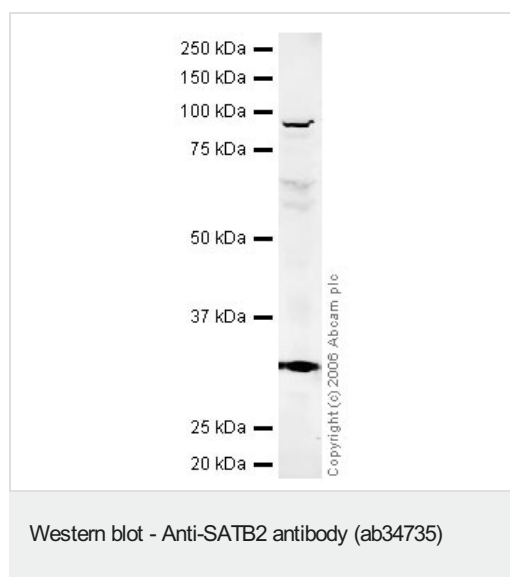
“应用说明”部分 下显示的仅为推荐的起始稀释度;实际最佳的稀释度/浓度应由使用者检定。

应用	Ab评论	说明
WB	★★★★★ (1)	Use a concentration of 1 µg/ml. Detects a band of approximately 85 kDa (predicted molecular weight: 83 kDa).

靶标

功能	Binds to DNA, at nuclear matrix- or scaffold-associated regions. Thought to recognize the sugar-phosphate structure of double-stranded DNA. Transcription factor controlling nuclear gene expression, by binding to matrix attachment regions (MARs) of DNA and inducing a local chromatin-loop remodeling. Acts as a docking site for several chromatin remodeling enzymes and also by recruiting corepressors (HDACs) or coactivators (HATs) directly to promoters and enhancers. Required for the initiation of the upper-layer neurons (UL1) specific genetic program and for the inactivation of deep-layer neurons (DL) and UL2 specific genes, probably by modulating BCL11B expression. Repressor of Ctip2 and regulatory determinant of corticocortical connections in the developing cerebral cortex. May play an important role in palate formation. Acts as a molecular node in a transcriptional network regulating skeletal development and osteoblast differentiation.
组织特异性	High expression in adult brain, moderate expression in fetal brain, and weak expression in adult liver, kidney, and spinal cord and in select brain regions, including amygdala, corpus callosum, caudate nucleus, and hippocampus.
疾病相关	<p>Note=Chromosomal aberrations involving SATB2 are found in isolated cleft palate. Translocation t(2;7); translocation t(2;11).</p> <p>Defects in SATB2 are a cause of cleft palate isolated (CPI) [MIM:119540]. A congenital fissure of the soft and/or hard palate, due to faulty fusion. Isolated cleft palate is not associated with cleft lips. Some patients may manifest other craniofacial dysmorphic features, mental retardation, and osteoporosis.</p> <p>Note=A chromosomal aberration involving SATB2 is found in a patient with classical features of Toriello-Carey syndrome. Translocation t(2;14)(q33;q22).</p>
序列相似性	<p>Belongs to the CUT homeobox family.</p> <p>Contains 2 CUT DNA-binding domains.</p> <p>Contains 1 homeobox DNA-binding domain.</p>
翻译后修饰	Sumoylated by PIAS1. Sumoylation promotes nuclear localization, but represses transcription factor activity.
细胞定位	Nucleus matrix.

图片



Anti-SATB2 antibody (ab34735) at 1 µg/ml + Mouse brain tissue lysate - total protein (0 days) (**ab7188**) at 10 µg

Secondary

IRDye 680 Conjugated Goat Anti-Rabbit IgG (H+L) at 1/15000 dilution

Performed under reducing conditions.

Predicted band size: 83 kDa

Observed band size: 85 kDa

Additional bands at: 30 kDa. We are unsure as to the identity of these extra bands.

Please note: All products are "FOR RESEARCH USE ONLY. NOT FOR USE IN DIAGNOSTIC PROCEDURES"

Our Abpromise to you: Quality guaranteed and expert technical support

- Replacement or refund for products not performing as stated on the datasheet
- Valid for 12 months from date of delivery
- Response to your inquiry within 24 hours
- We provide support in Chinese, English, French, German, Japanese and Spanish
- Extensive multi-media technical resources to help you
- We investigate all quality concerns to ensure our products perform to the highest standards

If the product does not perform as described on this datasheet, we will offer a refund or replacement. For full details of the Abpromise, please visit <https://www.abcam.cn/abpromise> or contact our technical team.

Terms and conditions

- Guarantee only valid for products bought direct from Abcam or one of our authorized distributors