


Anti-SASS6 antibody ab85993

2 图像

概述	
产品名称	Anti-SASS6抗体
描述	兔多克隆抗体to SASS6
宿主	Rabbit
经测试应用	适用于: WB, IP
种属反应性	与反应: Human 预测可用于: Chimpanzee, Rhesus monkey, Gorilla, Chinese hamster, Elephant 
免疫原	Synthetic peptide corresponding to Human SASS6 aa 600-700. Database link: Q6UVJ0
阳性对照	HeLa and 293T whole cell lysates.
常规说明	<p>The Life Science industry has been in the grips of a reproducibility crisis for a number of years. Abcam is leading the way in addressing this with our range of recombinant monoclonal antibodies and knockout edited cell lines for gold-standard validation. Please check that this product meets your needs before purchasing.</p> <p>If you have any questions, special requirements or concerns, please send us an inquiry and/or contact our Support team ahead of purchase. Recommended alternatives for this product can be found below, along with publications, customer reviews and Q&As</p>
性能	
形式	Liquid
存放说明	Shipped at 4°C. Upon delivery aliquot and store at -20°C. Avoid freeze / thaw cycles.
存储溶液	pH: 7 Preservative: 0.09% Sodium azide Constituent: Tris citrate/phosphate
纯度	Immunogen affinity purified
克隆	多克隆
同种型	IgG
应用	

The Abpromise guarantee

Abpromise™ 承诺保证使用 ab85993 于以下的经测试应用

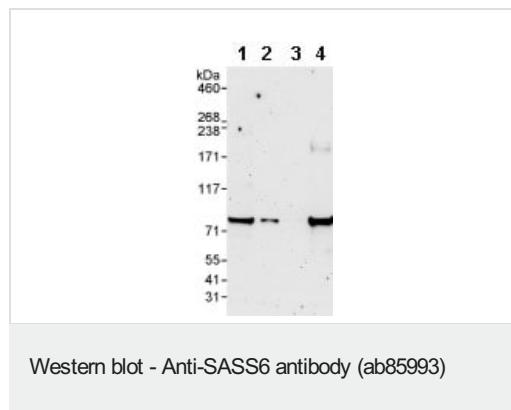
“应用说明”部分 下显示的仅为推荐的起始稀释度; 实际最佳的稀释度/浓度应由使用者检定。

应用	Ab 评论	说明
WB		1/2000 - 1/10000. Detects a band of approximately 74 kDa (predicted molecular weight: 74 kDa).
IP		Use at 2-5 µg/mg of lysate.

靶标

相关性	SASS6 (Spindle assembly abnormal protein 6 homolog) is required for centrosome duplication. It functions to ensure that each centriole seeds the formation of a single procentriole per cell cycle. Overexpression results in excess foci bearing centriolar markers.
细胞定位	Cytoplasm; cytoskeleton; centrosome. Cytoplasm; cytoskeleton; centrosome; centriole. Note: Component of the centrosome. Associated only transiently with nascent procentrioles during centriole biogenesis.

图片



All lanes : Anti-SASS6 antibody (ab85993) at 0.1 µg/ml

Lane 1 : HeLa whole cell lysate at 50 µg

Lane 2 : HeLa whole cell lysate at 15 µg

Lane 3 : HeLa whole cell lysate at 5 µg

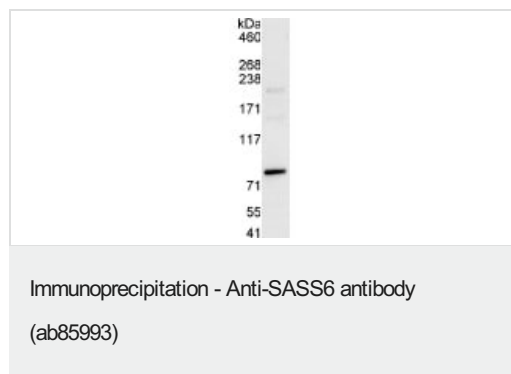
Lane 4 : 293T whole cell lysate at 50 µg

Developed using the ECL technique.

Predicted band size: 74 kDa

Observed band size: 74 kDa

Exposure time: 3 minutes



Detection of Human SASS6 in Immunoprecipitates of Whole cell lysate from HeLa cells (1 mg for IP, 20% of IP loaded) using ab85993 at 3 µg/mg lysate for IP and at 1 µg/ml for subsequent Western blot detection. Detection: Chemiluminescence with an exposure time of 30 seconds.

Please note: All products are "FOR RESEARCH USE ONLY. NOT FOR USE IN DIAGNOSTIC PROCEDURES"

Our Abpromise to you: Quality guaranteed and expert technical support

- Replacement or refund for products not performing as stated on the datasheet
- Valid for 12 months from date of delivery
- Response to your inquiry within 24 hours
- We provide support in Chinese, English, French, German, Japanese and Spanish
- Extensive multi-media technical resources to help you
- We investigate all quality concerns to ensure our products perform to the highest standards

If the product does not perform as described on this datasheet, we will offer a refund or replacement. For full details of the Abpromise, please visit <https://www.abcam.cn/abpromise> or contact our technical team.

Terms and conditions

- Guarantee only valid for products bought direct from Abcam or one of our authorized distributors