


### Anti-Sarcomeric Alpha Actinin antibody [EP2530Y] ab68168

**重组** RabMAb

**3 References** [3 图像](#)

#### 概述

产品名称	Anti-Sarcomeric Alpha Actinin抗体[EP2530Y]
描述	兔单克隆抗体[EP2530Y] to Sarcomeric Alpha Actinin
宿主	Rabbit
经测试应用	<b>适用于:</b> WB, IHC-P <b>不适用于:</b> Flow Cyt or ICC/IF
种属反应性	<b>与反应:</b> Human <b>预测可用于:</b> Mouse, Rat 
免疫原	Synthetic peptide within Human Sarcomeric Alpha Actinin aa 750-850 (C terminal). The exact sequence is proprietary.
阳性对照	Human skeletal muscle lysate and human muscle tissue.
常规说明	<p>This product is a recombinant monoclonal antibody, which offers several advantages including:</p> <ul style="list-style-type: none"> <li>- High batch-to-batch consistency and reproducibility</li> <li>- Improved sensitivity and specificity</li> <li>- Long-term security of supply</li> <li>- Animal-free production</li> </ul> <p>For more information <a href="#">see here</a>.</p> <p>Our RabMAb<sup>®</sup> technology is a patented hybridoma-based technology for making rabbit monoclonal antibodies. For details on our patents, please refer to <a href="#">RabMAb<sup>®</sup> patents</a>.</p>

#### 性能

形式	Liquid
存放说明	Shipped at 4°C. Store at -20°C. Stable for 12 months at -20°C.
存储溶液	pH: 7.2 Preservative: 0.05% Sodium azide Constituents: 0.1% BSA, 40% Glycerol (glycerin, glycerine), 9.85% Tris glycine, 50% Tissue culture supernatant
纯度	Tissue culture supernatant
克隆	单克隆

克隆编号

EP2530Y

同种型

IgG

应用

The Abpromise guarantee      **Abpromise™**承诺保证使用ab68168于以下的经测试应用

“应用说明”部分 下显示的仅为推荐的起始稀释度;实际最佳的稀释度/浓度应由使用者检定。

应用	Ab评论	说明
WB		
IHC-P		

应用说明

IHC-P: 1/100 - 1/250. Perform heat mediated antigen retrieval before commencing with IHC staining protocol.  
IP: 1/40.  
WB: 1/20000 - 1/50000. Detects a band of approximately 103 kDa (predicted molecular weight: 103 kDa).  
  
Is unsuitable for Flow Cyt or ICC/IF.  
  
Not yet tested in other applications.  
Optimal dilutions/concentrations should be determined by the end user.

靶标

功能

F-actin cross-linking protein which is thought to anchor actin to a variety of intracellular structures. This is a bundling protein.

组织特异性

Expressed in both skeletal and cardiac muscle.

疾病相关

Defects in ACTN2 are the cause of cardiomyopathy dilated type 1AA (CMD1AA) [MIM:612158]. Dilated cardiomyopathy is a disorder characterized by ventricular dilation and impaired systolic function, resulting in congestive heart failure and arrhythmia. Patients are at risk of premature death.

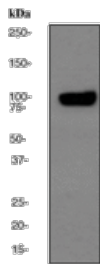
序列相似性

Belongs to the alpha-actinin family.  
Contains 1 actin-binding domain.  
Contains 2 CH (calponin-homology) domains.  
Contains 2 EF-hand domains.  
Contains 4 spectrin repeats.

细胞定位

Cytoplasm > myofibril > sarcomere > Z line. Colocalizes with MYOZ1 and FLNC at the Z-lines of skeletal muscle.

图片



Western blot - Anti-Sarcomeric Alpha Actinin antibody [EP2530Y] (ab68168)

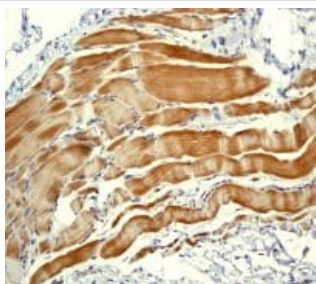
Anti-Sarcomeric Alpha Actinin antibody [EP2530Y] (ab68168) at 1/50000 dilution + human skeletal muscle lysate at 10 µg

### Secondary

goat anti-rabbit HRP at 1/2000 dilution

**Predicted band size:** 103 kDa

**Observed band size:** 103 kDa



Immunohistochemistry (Formalin/PFA-fixed paraffin-embedded sections) - Anti-Sarcomeric Alpha Actinin antibody [EP2530Y] (ab68168)

ab68168 at 1/100 dilution staining Sarcomeric Alpha Actinin in human muscles by Immunohistochemistry, Paraffin-embedded tissue.

Perform heat mediated antigen retrieval before commencing with IHC staining protocol.

### Why choose a recombinant antibody?



**Research with confidence**  
Consistent and reproducible results



**Long-term and scalable supply**  
Recombinant technology



**Success from the first experiment**  
Confirmed specificity



**Ethical standards compliant**  
Animal-free production

Anti-Sarcomeric Alpha Actinin antibody [EP2530Y] (ab68168)

**Please note:** All products are "FOR RESEARCH USE ONLY. NOT FOR USE IN DIAGNOSTIC PROCEDURES"

**Our Abpromise to you: Quality guaranteed and expert technical support**

- Replacement or refund for products not performing as stated on the datasheet
- Valid for 12 months from date of delivery
- Response to your inquiry within 24 hours
- We provide support in Chinese, English, French, German, Japanese and Spanish
- Extensive multi-media technical resources to help you
- We investigate all quality concerns to ensure our products perform to the highest standards

If the product does not perform as described on this datasheet, we will offer a refund or replacement. For full details of the Abpromise, please visit <https://www.abcam.cn/abpromise> or contact our technical team.

#### **Terms and conditions**

---

- Guarantee only valid for products bought direct from Abcam or one of our authorized distributors