

Anti-Sarcomeric Alpha Actinin antibody ab72592

★★★★★ [1 Abreviews](#) [28 References](#) [3 图像](#)

概述

产品名称	Anti-Sarcomeric Alpha Actinin抗体
描述	兔多克隆抗体to Sarcomeric Alpha Actinin
宿主	Rabbit
经测试应用	适用于: WB, IHC-P, ICC/IF
种属反应性	与反应: Human
免疫原	Synthetic peptide derived from the N-terminal of human Sarcomeric Alpha Actinin.
常规说明	<p>The Life Science industry has been in the grips of a reproducibility crisis for a number of years. Abcam is leading the way in addressing this with our range of recombinant monoclonal antibodies and knockout edited cell lines for gold-standard validation. Please check that this product meets your needs before purchasing.</p> <p>If you have any questions, special requirements or concerns, please send us an inquiry and/or contact our Support team ahead of purchase. Recommended alternatives for this product can be found below, along with publications, customer reviews and Q&As</p>

性能

形式	Liquid
存放说明	Shipped at 4°C. Store at -20°C. Stable for 12 months at -20°C.
存储溶液	<p>pH: 7.40</p> <p>Preservative: 0.02% Sodium azide</p> <p>Constituents: 0.87% Sodium chloride, 50% Glycerol (glycerin, glycerine), PBS</p>
纯度	Without Mg ²⁺ and Ca ²⁺
克隆	Immunogen affinity purified
同种型	多克隆
	IgG

应用

The Abpromise guarantee

Abpromise™ 承诺保证使用ab72592于以下的经测试应用

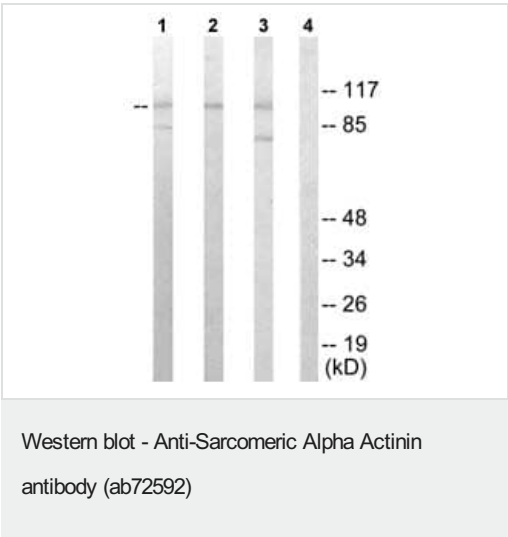
“应用说明”部分 下显示的仅为推荐的起始稀释度;实际最佳的稀释度/浓度应由使用者检定。

应用	Ab评论	说明
WB	★★★★★ (1)	1/500 - 1/1000. Detects a band of approximately 103 kDa (predicted molecular weight: 103 kDa).
IHC-P		1/50 - 1/100.
ICC/IF		1/500 - 1/1000.

靶标

功能	F-actin cross-linking protein which is thought to anchor actin to a variety of intracellular structures. This is a bundling protein.
组织特异性	Expressed in both skeletal and cardiac muscle.
疾病相关	Defects in ACTN2 are the cause of cardiomyopathy dilated type 1AA (CMD1AA) [MIM:612158]. Dilated cardiomyopathy is a disorder characterized by ventricular dilation and impaired systolic function, resulting in congestive heart failure and arrhythmia. Patients are at risk of premature death.
序列相似性	Belongs to the alpha-actinin family. Contains 1 actin-binding domain. Contains 2 CH (calponin-homology) domains. Contains 2 EF-hand domains. Contains 4 spectrin repeats.
细胞定位	Cytoplasm > myofibril > sarcomere > Z line. Colocalizes with MYOZ1 and FLNC at the Z-lines of skeletal muscle.

图片

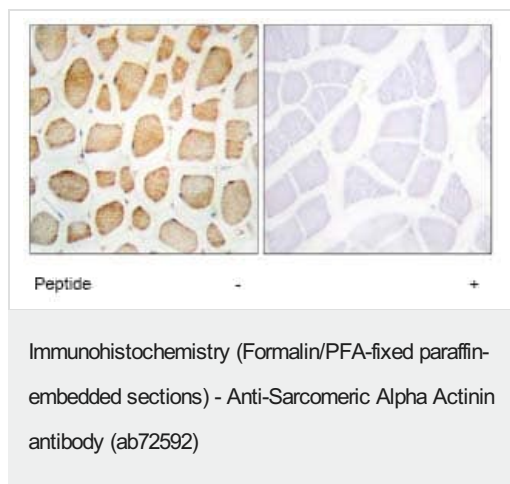


All lanes : Anti-Sarcomeric Alpha Actinin antibody (ab72592) at 1/500 dilution

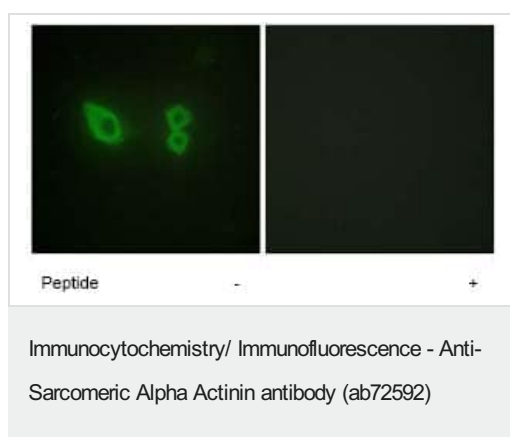
- Lane 1 :** Extracts from HeLa cells
- Lane 2 :** Extracts from HepG2 cells
- Lane 3 :** Extracts from HUVEC cells
- Lane 4 :** Extracts from HUVEC cells with immunising peptide at 5 µg

Lysates/proteins at 5 µg per lane.

Predicted band size: 103 kDa
Observed band size: 103 kDa
Additional bands at: 80 kDa, 85 kDa. We are unsure as to the identity of these extra bands.



Immunohistochemical analysis of paraffin-embedded human skeletal muscle tissue using ab72592, at 1/50 dilution, in the presence (right panel) or absence (left panel) of immunising peptide.



Immunofluorescent analysis of HeLa cells using ab72592, at 1/500 dilution, in the presence (right panel) or absence (left panel) of the immunising peptide.

Please note: All products are "FOR RESEARCH USE ONLY. NOT FOR USE IN DIAGNOSTIC PROCEDURES"

Our Abpromise to you: Quality guaranteed and expert technical support

- Replacement or refund for products not performing as stated on the datasheet
- Valid for 12 months from date of delivery
- Response to your inquiry within 24 hours
- We provide support in Chinese, English, French, German, Japanese and Spanish
- Extensive multi-media technical resources to help you
- We investigate all quality concerns to ensure our products perform to the highest standards

If the product does not perform as described on this datasheet, we will offer a refund or replacement. For full details of the Abpromise, please visit <https://www.abcam.cn/abpromise> or contact our technical team.

Terms and conditions

- Guarantee only valid for products bought direct from Abcam or one of our authorized distributors