


### Anti-SAR1B antibody [EPR10105(B)] ab155278

**重组** RabMAb

★★★★★ **3 Abreviews** **4 References** **6 图像**

#### 概述

产品名称	Anti-SAR1B抗体[EPR10105(B)]
描述	兔单克隆抗体[EPR10105(B)] to SAR1B
宿主	Rabbit
经测试应用	<b>适用于:</b> Flow Cyt (Intra), ICC/IF, WB, IHC-P
种属反应性	<b>与反应:</b> Human <b>预测可用于:</b> Mouse, Rat 
免疫原	Synthetic peptide. This information is proprietary to Abcam and/or its suppliers.
阳性对照	293T, fetal liver, fetal brain and Human skeletal muscle lysates; Human gastric carcinoma and brain tissue; 293T cells.
常规说明	<p>This product is a recombinant monoclonal antibody, which offers several advantages including:</p> <ul style="list-style-type: none"> <li>- High batch-to-batch consistency and reproducibility</li> <li>- Improved sensitivity and specificity</li> <li>- Long-term security of supply</li> <li>- Animal-free production</li> </ul> <p>For more information <b><a href="#">see here</a></b>.</p> <p>Our RabMAb<sup>®</sup> technology is a patented hybridoma-based technology for making rabbit monoclonal antibodies. For details on our patents, please refer to <b><a href="#">RabMAb<sup>®</sup> patents</a></b>.</p>

#### 性能

形式	Liquid
存放说明	Shipped at 4°C. Store at -20°C.
存储溶液	<p>pH: 7.2</p> <p>Preservative: 0.01% Sodium azide</p> <p>Constituents: 9% PBS, 40% Glycerol (glycerin, glycerine), 0.05% BSA, 50% Tissue culture supernatant</p>
纯度	Tissue culture supernatant
克隆	单克隆
克隆编号	EPR10105(B)

同种型

IgG

应用

The Abpromise guarantee

Abpromise™承诺保证使用ab155278于以下的经测试应用

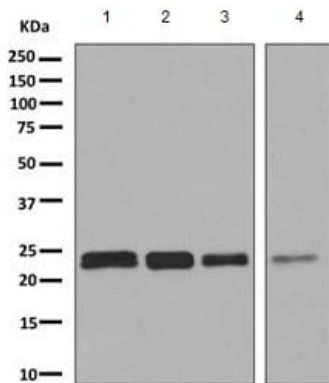
“应用说明”部分 下显示的仅为推荐的起始稀释度;实际最佳的稀释度/浓度应由使用者检定。

应用	Ab评论	说明
Flow Cyt (Intra)		1/10 - 1/100. <b>ab172730</b> - Rabbit monoclonal IgG, is suitable for use as an isotype control with this antibody.
ICC/IF	★★★★★ (2)	1/50 - 1/100.
WB	★★★★★ (1)	1/1000 - 1/10000. Predicted molecular weight: 22 kDa.
IHC-P		1/50 - 1/100. Perform heat mediated antigen retrieval with citrate buffer pH 6 before commencing with IHC staining protocol.

靶标

功能	Involved in transport from the endoplasmic reticulum to the Golgi apparatus. Activated by the guanine nucleotide exchange factor PREB. Involved in the selection of the protein cargo and the assembly of the COPII coat complex.
组织特异性	Expressed in many tissues including small intestine, liver, muscle and brain.
疾病相关	Defects in SAR1B are the cause of chylomicron retention disease (CMRD) [MIM:246700]; also known as Anderson disease (ANDD). CMRD is an autosomal recessive disorder of severe fat malabsorption associated with failure to thrive in infancy. The condition is characterized by deficiency of fat-soluble vitamins, low blood cholesterol levels, and a selective absence of chylomicrons from blood. Affected individuals accumulate chylomicron-like particles in membrane-bound compartments of enterocytes, which contain large cytosolic lipid droplets.
序列相似性	Belongs to the small GTPase superfamily. SAR1 family.
细胞定位	Endoplasmic reticulum membrane. Golgi apparatus > Golgi stack membrane. Associated with the endoplasmic reticulum and Golgi stacks, in particular in the juxta-nuclear Golgi region.

图片



Western blot - Anti-SAR1B antibody [EPR10105(B)] (ab155278)

**All lanes :** Anti-SAR1B antibody [EPR10105(B)] (ab155278) at 1/1000 dilution

**Lane 1 :** 293T cell lysate

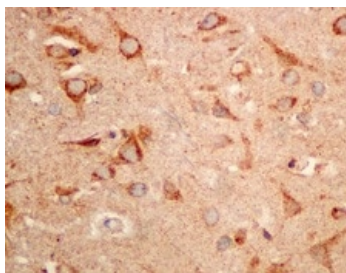
**Lane 2 :** Fetal liver tissue lysate

**Lane 3 :** Fetal brain tissue lysate

**Lane 4 :** Human skeletal muscle tissue lysate

Lysates/proteins at 10 µg per lane.

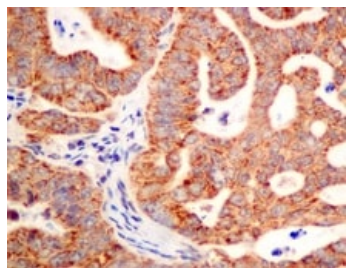
**Predicted band size:** 22 kDa



Immunohistochemistry (Formalin/PFA-fixed paraffin-embedded sections) - Anti-SAR1B antibody [EPR10105(B)] (ab155278)

Immunohistochemical analysis of paraffin embedded Human brain tissue labeling SAR1B with ab155278 at 1/50 dilution.

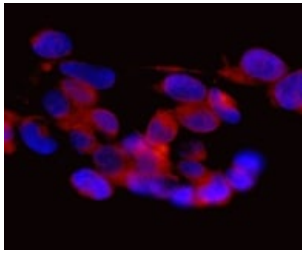
Perform heat mediated antigen retrieval with citrate buffer pH 6 before commencing with IHC staining protocol.



Immunohistochemistry (Formalin/PFA-fixed paraffin-embedded sections) - Anti-SAR1B antibody [EPR10105(B)] (ab155278)

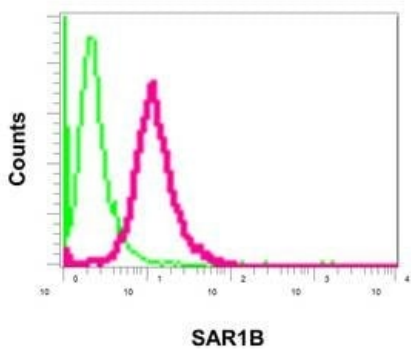
Immunohistochemical analysis of paraffin embedded Human gastric carcinoma tissue labeling SAR1B with ab155278 at 1/50 dilution.

Perform heat mediated antigen retrieval with citrate buffer pH 6 before commencing with IHC staining protocol.



Immunofluorescence analysis of 293T cells labeling SAR1B with ab155278 at a 1/50 dilution.

Immunocytochemistry/ Immunofluorescence - Anti-SAR1B antibody [EPR10105(B)] (ab155278)



Intracellular flow cytometric analysis of permeabilized 293T cells using ab155278 at a 1/10 dilution (red) or a rabbit IgG (negative) (green).

Flow Cytometry (Intracellular) - Anti-SAR1B antibody [EPR10105(B)] (ab155278)

Why choose a recombinant antibody?



Anti-SAR1B antibody [EPR10105(B)] (ab155278)

**Please note:** All products are "FOR RESEARCH USE ONLY. NOT FOR USE IN DIAGNOSTIC PROCEDURES"

**Our Promise to you: Quality guaranteed and expert technical support**

- Replacement or refund for products not performing as stated on the datasheet
- Valid for 12 months from date of delivery

- Response to your inquiry within 24 hours
- We provide support in Chinese, English, French, German, Japanese and Spanish
- Extensive multi-media technical resources to help you
- We investigate all quality concerns to ensure our products perform to the highest standards

If the product does not perform as described on this datasheet, we will offer a refund or replacement. For full details of the Abpromise, please visit <https://www.abcam.cn/abpromise> or contact our technical team.

#### **Terms and conditions**

---

- Guarantee only valid for products bought direct from Abcam or one of our authorized distributors