


Anti-SAP130 antibody ab114978

[2 References](#) [1 图像](#)

概述

产品名称	Anti-SAP130抗体
描述	兔多克隆抗体to SAP130
宿主	Rabbit
经测试应用	适用于: IP
种属反应性	与反应: Human 预测可用于: Mouse, Rat, Horse, Chicken, Guinea pig, Cow, Turkey, Pig, Chimpanzee, Rhesus monkey, Gorilla, Orangutan 
免疫原	Synthetic peptide corresponding to Human SAP130 aa 998-1048. Database link: Q9H0E3
阳性对照	HeLa whole cell lysate
常规说明	<p>The Life Science industry has been in the grips of a reproducibility crisis for a number of years. Abcam is leading the way in addressing this with our range of recombinant monoclonal antibodies and knockout edited cell lines for gold-standard validation. Please check that this product meets your needs before purchasing.</p> <p>If you have any questions, special requirements or concerns, please send us an inquiry and/or contact our Support team ahead of purchase. Recommended alternatives for this product can be found below, along with publications, customer reviews and Q&As</p>

性能

形式	Liquid
存放说明	Shipped at 4°C. Upon delivery aliquot and store at -20°C. Avoid freeze / thaw cycles.
存储溶液	pH: 7 Preservative: 0.09% Sodium azide Constituent: 99% Tris citrate/phosphate pH 7 to 8
纯度	Immunogen affinity purified
纯化说明	ab114978 is affinity purified using an epitope specific to SAP130 immobilized on solid support
克隆	多克隆

同种型

IgG

应用

The Abpromise guarantee

Abpromise™承诺保证使用ab114978于以下的经测试应用

“应用说明”部分 下显示的仅为推荐的起始稀释度;实际最佳的稀释度/浓度应由使用者检定。

应用	Ab评论	说明
IP		Use at 2-5 µg/mg of lysate.

靶标

功能

Acts as a transcriptional repressor. May function in the assembly and/or enzymatic activity of the mSin3A corepressor complex or in mediating interactions between the complex and other regulatory complexes.

组织特异性

Expressed in various cancer cell lines.

序列相似性

Belongs to the SAP130 family.

结构域

The N-terminus may interact with a transcriptional coactivator.

The C-terminus may interact with HDAC-dependent and HDAC-independent corepressors.

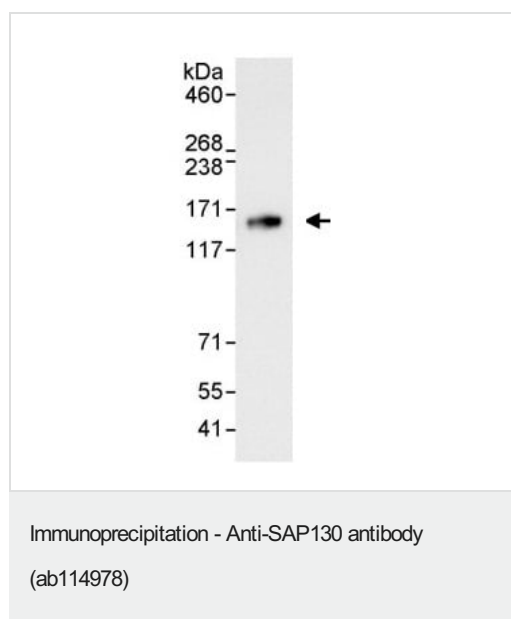
翻译后修饰

Acetylated.

细胞定位

Nucleus.

图片



ab114978, used for IP at 3 µg/mg lysate, staining SAP130 in HeLa whole cell lysate (1 µg for IP, 20% of IP loaded).

Detection: Chemiluminescence with an exposure time of 10 seconds.

Please note: All products are "FOR RESEARCH USE ONLY. NOT FOR USE IN DIAGNOSTIC PROCEDURES"

Our Abpromise to you: Quality guaranteed and expert technical support

- Replacement or refund for products not performing as stated on the datasheet
- Valid for 12 months from date of delivery
- Response to your inquiry within 24 hours

- We provide support in Chinese, English, French, German, Japanese and Spanish
- Extensive multi-media technical resources to help you
- We investigate all quality concerns to ensure our products perform to the highest standards

If the product does not perform as described on this datasheet, we will offer a refund or replacement. For full details of the Abpromise, please visit <https://www.abcam.cn/abpromise> or contact our technical team.

Terms and conditions

- Guarantee only valid for products bought direct from Abcam or one of our authorized distributors