





### Anti-SAMD3 antibody ab122028

**5 References**   **3 图像**

#### 概述

产品名称	Anti-SAMD3抗体
描述	兔多克隆抗体to SAMD3
宿主	Rabbit
经测试应用	适用于: IHC-P, WB
种属反应性	与反应: Mouse, Rat, Human
免疫原	Recombinant fragment corresponding to amino acids 221-303 of Human SAMD3 isoform 1 (Q8N6K7)  <b>Run BLAST with</b>   <b>Run BLAST with</b> 
阳性对照	Human pancreas tissue. Total protein lysate from RT-4 and U-251 MG cells.
常规说明	<p>The Life Science industry has been in the grips of a reproducibility crisis for a number of years. Abcam is leading the way in addressing this with our range of recombinant monoclonal antibodies and knockout edited cell lines for gold-standard validation. Please check that this product meets your needs before purchasing.</p> <p>If you have any questions, special requirements or concerns, please send us an inquiry and/or contact our Support team ahead of purchase. Recommended alternatives for this product can be found below, along with publications, customer reviews and Q&amp;As</p>

#### 性能

形式	Liquid
存放说明	Shipped at 4°C. Store at -20°C.
存储溶液	pH: 7.20 Preservative: 0.02% Sodium azide Constituents: 59% PBS, 40% Glycerol (glycerin, glycerine)
纯度	Immunogen affinity purified
克隆	多克隆
同种型	IgG

#### 应用

The Abpromise guarantee

Abpromise™承诺保证使用ab122028于以下的经测试应用

“应用说明”部分 下显示的仅为推荐的起始稀释度;实际最佳的稀释度/浓度应由使用者检定。

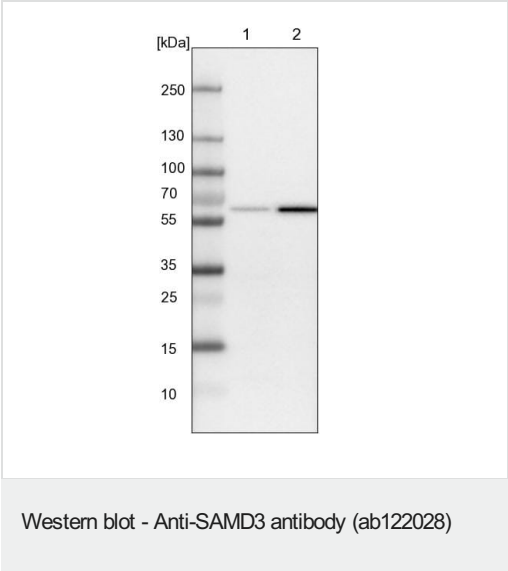
应用	Ab评论	说明
IHC-P		1/20 - 1/50. Perform heat mediated antigen retrieval with citrate buffer pH 6 before commencing with IHC staining protocol. Use buffer at pH 6 for antigen retrieval.
WB		Use a concentration of 0.04 - 0.4 µg/ml.

靶标

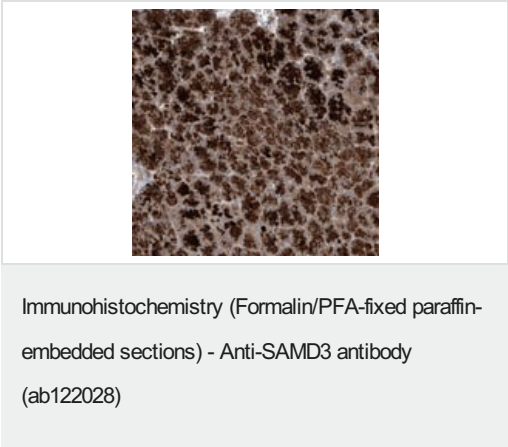
序列相似性

Contains 1 SAM (sterile alpha motif) domain.

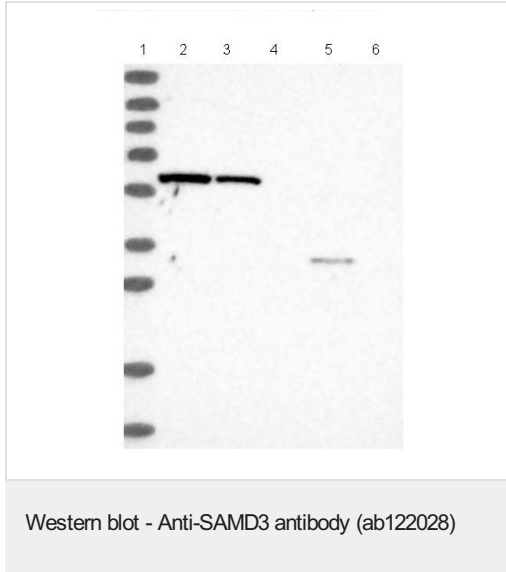
图片



Lane 1: NIH-3T3 cell lysate (Mouse embryonic fibroblast cells)  
Lane 2: NBT-II cell lysate (Rat Wistar bladder tumour cells)



ab122028 at 1/40 dilution staining SAMD3 in paraffin embedded Human pancreas tissue. This image shows strong cytoplasmic positivity in exocrine glandular cells.



**All lanes :** Anti-SAMD3 antibody (ab122028) at 1/250 dilution

**Lane 1 :** Marker [kDa] 230, 130, 95, 72, 56, 36, 28, 17, 11

**Lane 2 :** RT-4

**Lane 3 :** U-251 MG

**Lane 4 :** Human Plasma

**Lane 5 :** Human Liver

**Lane 6 :** Human Tonsil

**Please note:** All products are "FOR RESEARCH USE ONLY. NOT FOR USE IN DIAGNOSTIC PROCEDURES"

#### **Our Abpromise to you: Quality guaranteed and expert technical support**

---

- Replacement or refund for products not performing as stated on the datasheet
- Valid for 12 months from date of delivery
- Response to your inquiry within 24 hours
- We provide support in Chinese, English, French, German, Japanese and Spanish
- Extensive multi-media technical resources to help you
- We investigate all quality concerns to ensure our products perform to the highest standards

If the product does not perform as described on this datasheet, we will offer a refund or replacement. For full details of the Abpromise, please visit <https://www.abcam.cn/abpromise> or contact our technical team.

#### **Terms and conditions**

---

- Guarantee only valid for products bought direct from Abcam or one of our authorized distributors