


Anti-SAM68 antibody [EPR3232] ab109197

重组 RabMAb

3 References **5 图像**

概述

产品名称	Anti-SAM68抗体[EPR3232]
描述	兔单克隆抗体[EPR3232] to SAM68
宿主	Rabbit
经测试应用	适用于: Flow Cyt (Intra), WB, IHC-P, ICC/IF
种属反应性	与反应: Human 预测可用于: Mouse 
免疫原	Synthetic peptide. This information is proprietary to Abcam and/or its suppliers.
阳性对照	Jurkat, HeLa, A431 and A673 cell lysates Paraffin-embedded human kidney tissue HeLa cells
常规说明	<p>This product is a recombinant monoclonal antibody, which offers several advantages including:</p> <ul style="list-style-type: none"> - High batch-to-batch consistency and reproducibility - Improved sensitivity and specificity - Long-term security of supply - Animal-free production <p>For more information see here.</p> <p>Our RabMAb[®] technology is a patented hybridoma-based technology for making rabbit monoclonal antibodies. For details on our patents, please refer to RabMAb[®] patents.</p> <p>Rat: We have preliminary internal testing data to indicate this antibody may not react with this species. Please contact us for more information.</p>

性能

形式	Liquid
存放说明	Shipped at 4°C. Store at -20°C. Stable for 12 months at -20°C.
存储溶液	<p>pH: 7.20</p> <p>Preservative: 0.05% Sodium azide</p> <p>Constituents: 0.1% BSA, 40% Glycerol (glycerin, glycerine), 9.85% Tris glycine, 50% Tissue culture supernatant</p>
纯度	Protein A purified
克隆	单克隆

克隆编号EPR3232

同种型IgG

应用

The Abpromise guarantee **Abpromise™**承诺保证使用ab109197于以下的经测试应用

“应用说明”部分 下显示的仅为推荐的起始稀释度;实际最佳的稀释度/浓度应由使用者检定。

应用	Ab评论	说明
Flow Cyt (Intra)		1/100 - 1/1000. ab172730 - Rabbit monoclonal IgG, is suitable for use as an isotype control with this antibody.
WB		1/1000 - 1/10000. Predicted molecular weight: 48 kDa.
IHC-P		1/250 - 1/500. Perform heat mediated antigen retrieval with citrate buffer pH 6 before commencing with IHC staining protocol.
ICC/IF		1/250 - 1/500.

靶标

功能 Recruited and tyrosine phosphorylated by several receptor systems, for example the T-cell, leptin and insulin receptors. Once phosphorylated, functions as an adapter protein in signal transduction cascades by binding to SH2 and SH3 domain-containing proteins. Role in G2-M progression in the cell cycle. Represses CBP-dependent transcriptional activation apparently by competing with other nuclear factors for binding to CBP. Also acts as a putative regulator of mRNA stability and/or translation rates and mediates mRNA nuclear export.
Isoform 3, which is expressed in growth-arrested cells only, inhibits S phase.

组织特异性 Ubiquitously expressed in all tissue examined. Isoform 1 is expressed at lower levels in brain, skeletal muscle, and liver whereas isoform 3 is intensified in skeletal muscle and in liver.

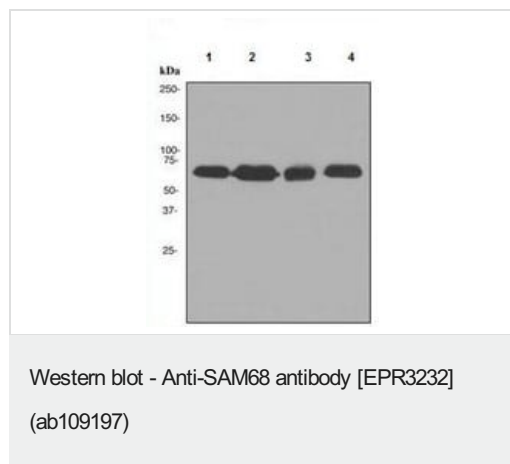
序列相似性 Belongs to the KHDRBS family.
Contains 1 KH domain.

发展阶段 Isoform 3 is only expressed in growth-arrested cells.

结构域 The KH domain is required for binding to RNA.
The Pro-rich domains are flanked by Arg/Gly-rich motifs which can be asymmetric dimethylated on arginine residues to give the DMA/Gly-rich regions. Selective methylation on these motifs can modulate protein-protein interactions.

翻译后修饰 Tyrosine phosphorylated by several non-receptor tyrosine kinases, for example LCK, FYN and JAK3. Negatively correlates with ability to bind RNA but required for many interactions with proteins.
Acetylated. Positively correlates with ability to bind RNA.
Arginine methylation is required for nuclear localization. Also can affect interaction with other proteins. Inhibits interaction with Src-like SH3 domains, but not interaction with WW domains of WBP4/FBP21 AND FBNP4/FBP30.
Arg-291, Arg-331 and Arg-346 are found to be also dimethylated, probably to asymmetric dimethylarginine.

图片



All lanes : Anti-SAM68 antibody [EPR3232] (ab109197) at 1/1000 dilution

Lane 1 : Jurkat cell lysate

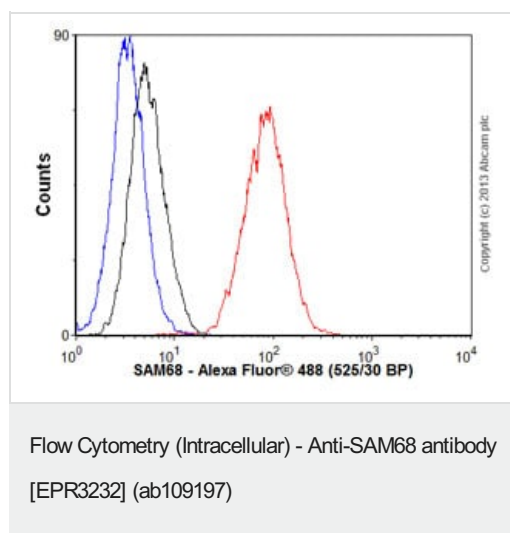
Lane 2 : HeLa cell lysate

Lane 3 : A431 cell lysate

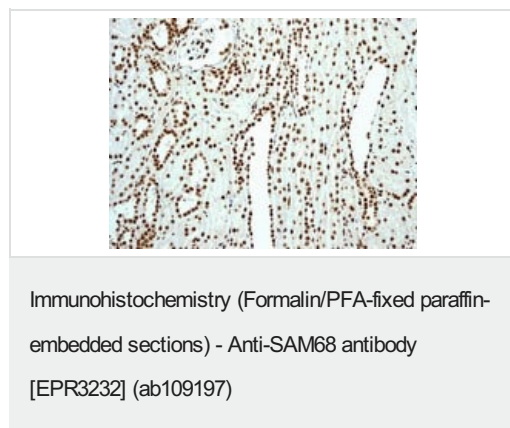
Lane 4 : A673 cell lysate

Lysates/proteins at 10 µg per lane.

Predicted band size: 48 kDa

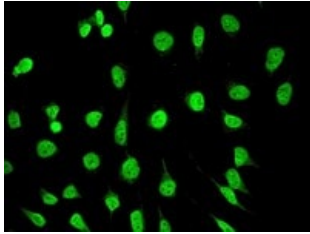


Overlay histogram showing HeLa cells stained with ab109197 (red line). The cells were fixed with 80% methanol (5 min) and then permeabilized with 0.1% PBS-Tween for 20 min. The cells were then incubated in 1x PBS / 10% normal goat serum / 0.3M glycine to block non-specific protein-protein interactions followed by the antibody (ab109197, 1/1000 dilution) for 30 min at 22°C. The secondary antibody used was Alexa Fluor® 488 goat anti-rabbit IgG (H+L) ([ab150077](#)) at 1/2000 dilution for 30 min at 22°C. Isotype control antibody (black line) was rabbit IgG (monoclonal) (1µg/1x10⁶ cells) used under the same conditions. Unlabelled sample (blue line) was also used as a control. Acquisition of >5,000 events were collected using a 20mW Argon ion laser (488nm) and 525/30 bandpass filter.



ab109197, at 1/250, staining SAM68 in paraffin-embedded Human kidney tissue by Immunohistochemistry.

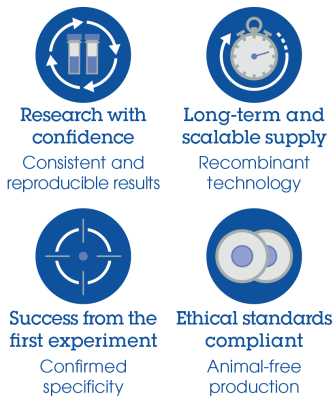
Perform heat mediated antigen retrieval with citrate buffer pH 6 before commencing with IHC staining protocol.



ab109197, at 1/250, staining SAM68 in HeLa cells by Immunofluorescence.

Immunocytochemistry/ Immunofluorescence - Anti-SAM68 antibody [EPR3232] (ab109197)

Why choose a recombinant antibody?



Anti-SAM68 antibody [EPR3232] (ab109197)

Please note: All products are "FOR RESEARCH USE ONLY. NOT FOR USE IN DIAGNOSTIC PROCEDURES"

Our Abpromise to you: Quality guaranteed and expert technical support

- Replacement or refund for products not performing as stated on the datasheet
- Valid for 12 months from date of delivery
- Response to your inquiry within 24 hours
- We provide support in Chinese, English, French, German, Japanese and Spanish
- Extensive multi-media technical resources to help you
- We investigate all quality concerns to ensure our products perform to the highest standards

If the product does not perform as described on this datasheet, we will offer a refund or replacement. For full details of the Abpromise, please visit <https://www.abcam.cn/abpromise> or contact our technical team.

Terms and conditions

- Guarantee only valid for products bought direct from Abcam or one of our authorized distributors