


Anti-SAM68 antibody ab86239

★★★★★ [1 Abreviews](#) [2 References](#) [3 图像](#)

概述

产品名称	Anti-SAM68抗体
描述	兔多克隆抗体to SAM68
宿主	Rabbit
经测试应用	适用于: WB, IP, IHC-P
种属反应性	与反应: Human 预测可用于: Rabbit, Guinea pig, Chimpanzee, Rhesus monkey, Gorilla, Orangutan 
免疫原	Synthetic peptide corresponding to a region between residue 1 and 50 of Human SAM68 (NP_006550.1).
阳性对照	Whole cell lysate from HeLa cells.
常规说明	<p>The Life Science industry has been in the grips of a reproducibility crisis for a number of years. Abcam is leading the way in addressing this with our range of recombinant monoclonal antibodies and knockout edited cell lines for gold-standard validation. Please check that this product meets your needs before purchasing.</p> <p>If you have any questions, special requirements or concerns, please send us an inquiry and/or contact our Support team ahead of purchase. Recommended alternatives for this product can be found below, along with publications, customer reviews and Q&As</p>

性能

形式	Liquid
存放说明	Shipped at 4°C. Upon delivery aliquot and store at -20°C. Avoid freeze / thaw cycles.
存储溶液	pH: 6.8 Preservative: 0.09% Sodium azide Constituents: 0.1% BSA, Tris buffered saline
纯度	Immunogen affinity purified
克隆	多克隆
同种型	IgG

应用

The Abpromise guarantee **Abpromise™**承诺保证使用ab86239于以下的经测试应用

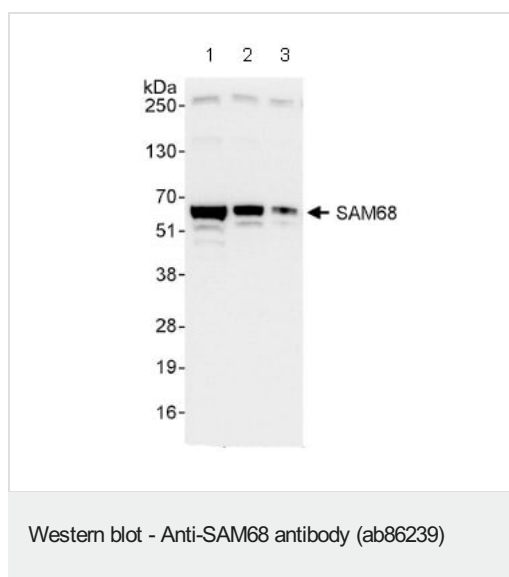
“应用说明”部分 下显示的仅为推荐的起始稀释度;实际最佳的稀释度/浓度应由使用者检定。

应用	Ab评论	说明
WB		1/2000 - 1/10000. Predicted molecular weight: 49 kDa.
IP		Use at 2-5 µg/mg of lysate.
IHC-P		1/500 - 1/2000. Perform heat mediated antigen retrieval with citrate buffer pH 6 before commencing with IHC staining protocol.

靶标

功能	<p>Recruited and tyrosine phosphorylated by several receptor systems, for example the T-cell, leptin and insulin receptors. Once phosphorylated, functions as an adapter protein in signal transduction cascades by binding to SH2 and SH3 domain-containing proteins. Role in G2-M progression in the cell cycle. Represses CBP-dependent transcriptional activation apparently by competing with other nuclear factors for binding to CBP. Also acts as a putative regulator of mRNA stability and/or translation rates and mediates mRNA nuclear export.</p> <p>Isoform 3, which is expressed in growth-arrested cells only, inhibits S phase.</p>
组织特异性	<p>Ubiquitously expressed in all tissue examined. Isoform 1 is expressed at lower levels in brain, skeletal muscle, and liver whereas isoform 3 is intensified in skeletal muscle and in liver.</p>
序列相似性	<p>Belongs to the KHDRBS family.</p> <p>Contains 1 KH domain.</p>
发展阶段	<p>Isoform 3 is only expressed in growth-arrested cells.</p>
结构域	<p>The KH domain is required for binding to RNA.</p> <p>The Pro-rich domains are flanked by Arg/Gly-rich motifs which can be asymmetric dimethylated on arginine residues to give the DMA/Gly-rich regions. Selective methylation on these motifs can modulate protein-protein interactions.</p>
翻译后修饰	<p>Tyrosine phosphorylated by several non-receptor tyrosine kinases, for example LCK, FYN and JAK3. Negatively correlates with ability to bind RNA but required for many interactions with proteins.</p> <p>Acetylated. Positively correlates with ability to bind RNA.</p> <p>Arginine methylation is required for nuclear localization. Also can affect interaction with other proteins. Inhibits interaction with Src-like SH3 domains, but not interaction with WW domains of WBP4/FBP21 AND FNBP4/FBP30.</p> <p>Arg-291, Arg-331 and Arg-346 are found to be also dimethylated, probably to asymmetric dimethylarginine.</p>
细胞定位	<p>Nucleus. Membrane.</p>

图片



All lanes : Anti-SAM68 antibody (ab86239) at 0.04 µg/ml

Lane 1 : Whole cell lysate from HeLa cells at 50 µg

Lane 2 : Whole cell lysate from HeLa cells at 15 µg

Lane 3 : Whole cell lysate from HeLa cells at 5 µg

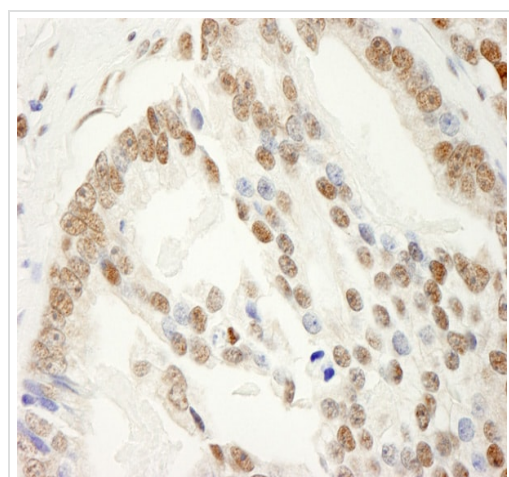
Developed using the ECL technique.

Predicted band size: 49 kDa

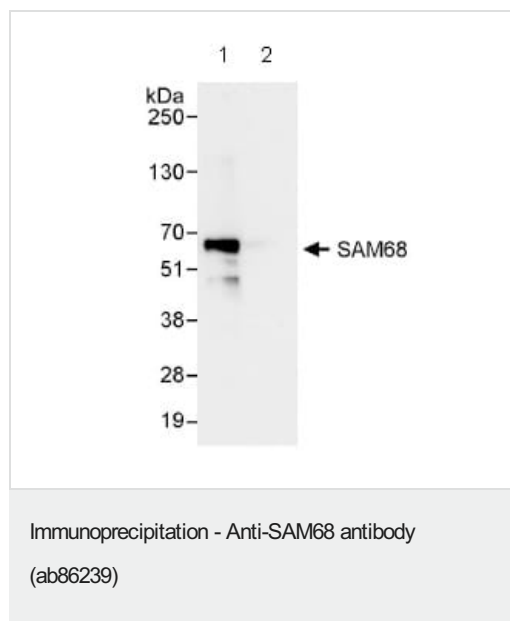
Observed band size: 60 kDa

Additional bands at: 250 kDa. We are unsure as to the identity of these extra bands.

Exposure time: 3 seconds



Immunohistochemistry (Formalin/PFA-fixed paraffin-embedded sections) analysis of human prostate carcinoma tissue labelling SAM68 with ab86239 at 1/1000 (0.2µg/ml). Detection: DAB.



Detection of SAM68 in Immunoprecipitates of Whole cell lysate from HeLa cells (1 mg for IP, 20% of IP loaded) using ab86239 at 3 μ g/mg lysate for IP (Lane 1) and at 1 μ g/ml for subsequent Western blot detection. Lane 2 represents control IgG IP. Detection: Chemiluminescence with an exposure time of 1 second.

Please note: All products are "FOR RESEARCH USE ONLY. NOT FOR USE IN DIAGNOSTIC PROCEDURES"

Our Abpromise to you: Quality guaranteed and expert technical support

- Replacement or refund for products not performing as stated on the datasheet
- Valid for 12 months from date of delivery
- Response to your inquiry within 24 hours
- We provide support in Chinese, English, French, German, Japanese and Spanish
- Extensive multi-media technical resources to help you
- We investigate all quality concerns to ensure our products perform to the highest standards

If the product does not perform as described on this datasheet, we will offer a refund or replacement. For full details of the Abpromise, please visit <https://www.abcam.cn/abpromise> or contact our technical team.

Terms and conditions

- Guarantee only valid for products bought direct from Abcam or one of our authorized distributors