

# Anti-Salmonella typhimurium LPS antibody [1E6] ab8274

★★★★★ [2 Abreviews](#) [26 References](#) [2 图像](#)

### 概述

产品名称	Anti-Salmonella typhimurium LPS抗体[1E6]
描述	小鼠单克隆抗体[1E6] to Salmonella typhimurium LPS
宿主	Mouse
特异性	This antibody is directed against lipopolisaccharides of <i>Salmonella typhimurium</i>
经测试应用	<b>适用于:</b> WB, Flow Cyt, Dot blot, ELISA, ICC/IF, Electron Microscopy
种属反应性	<b>与反应:</b> Salmonella typhimurium
免疫原	Full length native protein (purified) corresponding to Salmonella typhimurium Salmonella typhimurium LPS. Lipopolysaccharides of Salmonella typhimurium
常规说明	<p>This antibody is used for the detection of LPS of <i>Salmonella typhimurium</i>.</p> <p>This product was changed from ascites to tissue culture supernatant on 16<sup>th</sup> July 2018. Please note that the dilutions may need to be adjusted accordingly. If you have any questions, please do not hesitate to contact our scientific support team.</p> <p>The Life Science industry has been in the grips of a reproducibility crisis for a number of years. Abcam is leading the way in addressing this with our range of recombinant monoclonal antibodies and knockout edited cell lines for gold-standard validation. Please check that this product meets your needs before purchasing.</p> <p>If you have any questions, special requirements or concerns, please send us an inquiry and/or contact our Support team ahead of purchase. Recommended alternatives for this product can be found below, along with publications, customer reviews and Q&amp;As</p>

### 性能

形式	Liquid
存放说明	Shipped at 4°C. Upon delivery aliquot and store at -20°C. Avoid freeze / thaw cycles.
存储溶液	pH: 7.40 Preservative: 0.1% Sodium azide
纯度	Protein A purified
Primary antibody说明	This antibody is used for the detection of LPS of <i>Salmonella typhimurium</i>
克隆	单克隆
克隆编号	1E6

骨髓瘤	Sp2/0
同种型	IgG1
轻链类型	unknown

应用

The Abpromise guarantee      **Abpromise™**承诺保证使用ab8274于以下的经测试应用

“应用说明”部分 下显示的仅为推荐的起始稀释度;实际最佳的稀释度/浓度应由使用者检定。

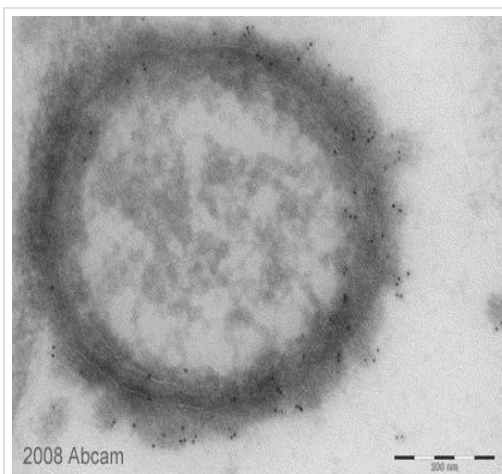
应用	Ab评论	说明
WB	★★★★★ (1)	Use at an assay dependent concentration.
Flow Cyt		Use at an assay dependent concentration. PubMed: 17442963 <b>ab170190</b> - Mouse monoclonal IgG1, is suitable for use as an isotype control with this antibody.
Dot blot		Use at an assay dependent concentration.
ELISA		Use at an assay dependent concentration.
ICC/IF		Use at an assay dependent concentration.
Electron Microscopy		Use at an assay dependent concentration.

靶标

相关性

Salmonellae are Gram-negative , facultatively anaerobic bacteria of the family Enterobacteriaceae, made up of nonspore-forming rods, usually motile with flagella. Salmonella enterica serovar Typhimurium is the among the most common Salmonella serovars causing Salmonellosis food poisoning. S. typhimurium has a less alarming public image than S.typhi (which causes typhoid), but is a bigger health problem worldwide. Salmonellae possess 3 major antigens; the "H" or flagellar antigen (phase 1 & 2), the "O" or somatic antigen (part of the LPS moiety) and the "Vi" or capsular antigen (referred to as "K" in other Enterobacteriaceae). Salmonellae also possess the LPS endotoxin characteristic of Gram-negative bacteria. This LPS is composed of an "O" polysaccharide ("O" antigen) an "R" core and the endotoxic inner "Lipid A". Endotoxins evoke fever and can activate complement, kinin and clotting factors.

图片

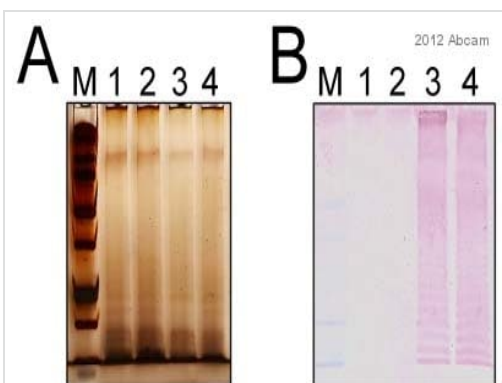


Electron Microscopy - Anti-Salmonella typhimurium

LPS antibody [1E6] (ab8274)

This image is courtesy of an anonymous Abreview

Electron microscopy image of ultrathin cryosections of *Salmonella paratyphi* using ab8274 (1/100). For further experimental details please refer to abreview.



Western blot - Anti-Salmonella typhimurium LPS

antibody [1E6] (ab8274)

Image courtesy of Aaron White by Abreview.

**All lanes :** Anti-Salmonella typhimurium LPS antibody [1E6] (ab8274) at 1/1000 dilution

**Lane 1 :** Whole cell polysaccharides from *S. Enteritidis* 27655-3b

**Lane 2 :** Whole cell polysaccharides from *S. Enteritidis* Sal8

**Lane 3 :** Whole cell polysaccharides from *S. Typhimurium* ATCC 14028s

**Lane 4 :** Whole cell polysaccharides from *S. Typhimurium* SL1344

Lysates/proteins at 100000000 cells per lane.

### Secondary

**All lanes :** AP conjugated goat anti-mouse polyclonal at 1/4000 dilution

Gels were (A) silver-stained or (B) Western blotted using the Anti-Salmonella typhimurium 0-4 antibody [1E6] (ab8274) as the primary antibody. Although equal amounts of cellular material were detected by silver staining, only the *S. Typhimurium* samples were recognized by the 1E6 antibody on the corresponding Western blot.

**Please note:** All products are "FOR RESEARCH USE ONLY. NOT FOR USE IN DIAGNOSTIC PROCEDURES"

### **Our Abpromise to you: Quality guaranteed and expert technical support**

---

- Replacement or refund for products not performing as stated on the datasheet
- Valid for 12 months from date of delivery
- Response to your inquiry within 24 hours
  
- We provide support in Chinese, English, French, German, Japanese and Spanish
- Extensive multi-media technical resources to help you
- We investigate all quality concerns to ensure our products perform to the highest standards

If the product does not perform as described on this datasheet, we will offer a refund or replacement. For full details of the Abpromise, please visit <https://www.abcam.cn/abpromise> or contact our technical team.

### **Terms and conditions**

---

- Guarantee only valid for products bought direct from Abcam or one of our authorized distributors