

Anti-Salivary alpha amylase antibody [EPR19605] ab201450

重组 RabMAb

1 References [7 图像](#)

概述

产品名称	Anti-Salivary alpha amylase抗体[EPR19605]
描述	兔单克隆抗体[EPR19605] to Salivary alpha amylase
宿主	Rabbit
特异性	This product reacts with Salivary alpha amylase (P04745), Pancreatic alpha amylase (P04746) and Carcinoid alpha amylase (P19961) due to high sequence homology.
经测试应用	适用于: IHC-P, WB
种属反应性	与反应: Human
免疫原	Recombinant fragment. This information is proprietary to Abcam and/or its suppliers.
阳性对照	WB: Human salivary alpha-amylase fragment recombinant protein; human pancreatic alpha-amylase fragment recombinant protein; human alpha-carcinoid alpha-amylase fragment recombinant protein; human parotid gland and pancreas lysates. IHC-P: Human parotid gland and pancreas tissues
常规说明	<p>This product is a recombinant monoclonal antibody, which offers several advantages including:</p> <ul style="list-style-type: none"> - High batch-to-batch consistency and reproducibility - Improved sensitivity and specificity - Long-term security of supply - Animal-free production <p>For more information see here.</p> <p>Our RabMAb[®] technology is a patented hybridoma-based technology for making rabbit monoclonal antibodies. For details on our patents, please refer to RabMAb[®] patents.</p>

性能

形式	Liquid
存放说明	Shipped at 4°C. Store at +4°C short term (1-2 weeks). Upon delivery aliquot. Store at -20°C long term. Avoid freeze / thaw cycle.
存储溶液	<p>pH: 7.2</p> <p>Preservative: 0.01% Sodium azide</p> <p>Constituents: 59% PBS, 40% Glycerol (glycerin, glycerine), 0.05% BSA</p>
纯度	Protein A purified

克隆

单克隆

克隆编号

EPR19605

同种型

IgG

应用

The Abpromise guarantee

Abpromise™承诺保证使用ab201450于以下的经测试应用

“应用说明”部分 下显示的仅为推荐的起始稀释度;实际最佳的稀释度/浓度应由使用者检定。

应用	Ab评论	说明
IHC-P		1/2000. Perform heat mediated antigen retrieval with Tris/EDTA buffer pH 9.0 before commencing with IHC staining protocol.
WB		1/5000. Detects a band of approximately 57 kDa (predicted molecular weight: 58 kDa).

靶标

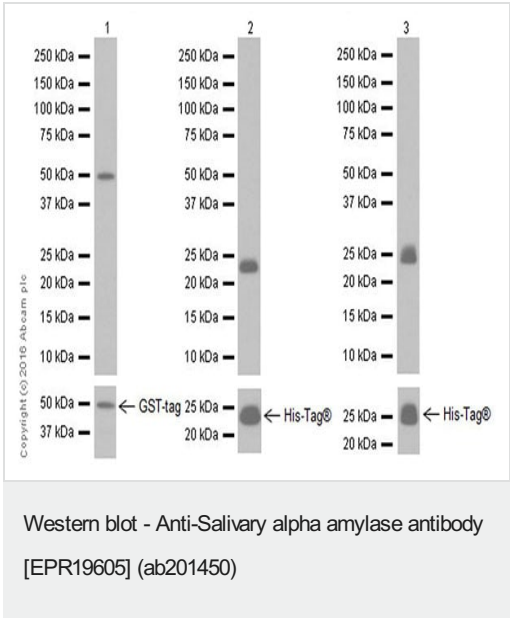
序列相似性

Belongs to the glycosyl hydrolase 13 family.

细胞定位

Secreted.

图片



All lanes : Anti-Salivary alpha amylase antibody [EPR19605] (ab201450) at 1/10000 dilution

- Lane 1 : Human salivary alpha-amylase fragment recombinant protein
- Lane 2 : Human pancreatic alpha-amylase fragment recombinant protein
- Lane 3 : Human alpha-carcinoid alpha-amylase fragment recombinant protein

Lysates/proteins at 0.01 µg per lane.

Secondary

All lanes : Goat Anti-Rabbit IgG H&L (HRP) (**ab97051**) at 1/100000 dilution

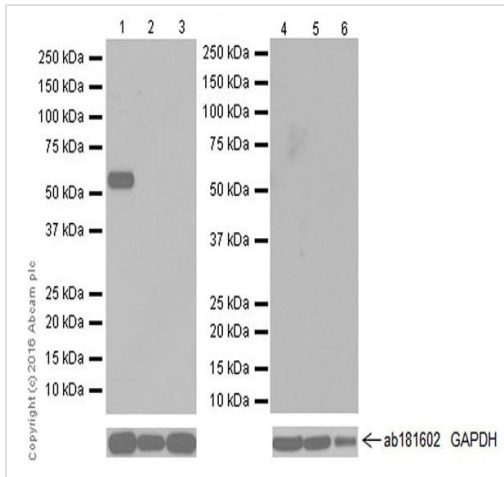
Predicted band size: 58 kDa

Observed band size: 22,22,50 kDa

Exposure time: 15 seconds

Blocking/Dilution buffer: 5% NFDM/TBST.

Human salivary alpha-amylase contains aa311-511 with a GST-tag. Human pancreatic alpha-amylase and alpha-carcinoid alpha-amylase fragment recombinant proteins contain aa311-511 with a His-Tag[®]. These three recombinant proteins were made in-house.



Western blot - Anti-Salivary alpha amylase antibody
[EPR19605] (ab201450)

Lanes 1-3 : Anti-Salivary alpha amylase antibody [EPR19605]
(ab201450) at 1/20000 dilution

Lanes 4-6 : Anti-Salivary alpha amylase antibody [EPR19605]
(ab201450) at 1/1000 dilution

Lane 1 : Human parotid gland lysate

Lane 2 : Human fetal brain lysate

Lane 3 : Human fetal liver lysate

Lane 4 : Human fetal heart lysate

Lane 5 : Human fetal kidney lysate

Lane 6 : Human fetal spleen lysate

Lysates/proteins at 10 µg per lane.

Secondary

All lanes : Goat Anti-Rabbit IgG Peroxidase Conjugate, specific to
the non-reduced form of IgG at 1/10000 dilution

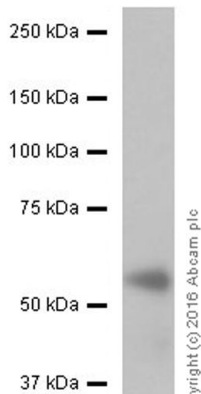
Predicted band size: 58 kDa

Observed band size: 57 kDa

Exposure time: 3 minutes

Blocking/Dilution buffer: 5% NFDM/TBST.

The expression profile observed is consistent with what has been
described in the literature (PMID: 3261213).



Western blot - Anti-Salivary alpha amylase antibody [EPR19605] (ab201450)

Anti-Salivary alpha amylase antibody [EPR19605] (ab201450) at 1/5000 dilution + Human pancreas lysate at 10 µg

Secondary

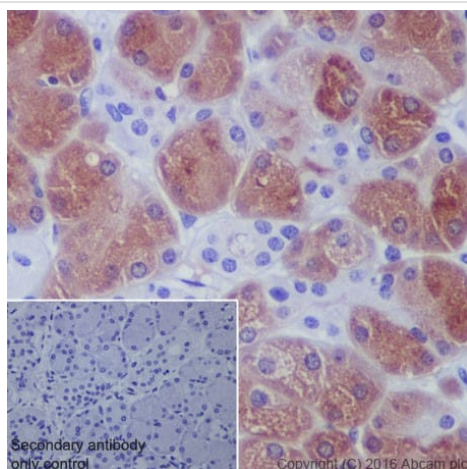
Goat Anti-Rabbit IgG Peroxidase Conjugate, specific to the non-reduced form of IgG at 1/10000 dilution

Predicted band size: 58 kDa

Observed band size: 57 kDa

Exposure time: 10 seconds

Blocking/Dilution buffer: 5% NFDM/TBST.

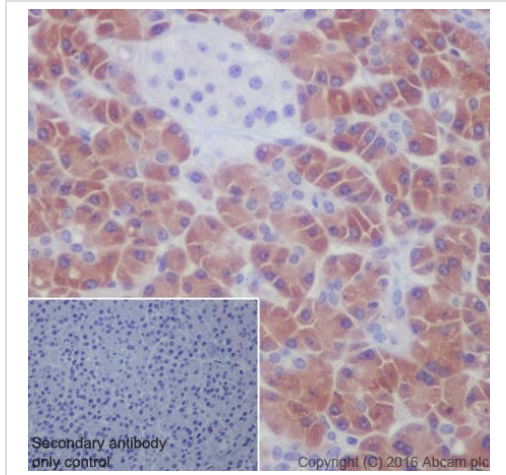


Immunohistochemistry (Formalin/PFA-fixed paraffin-embedded sections) - Anti-Salivary alpha amylase antibody [EPR19605] (ab201450)

Immunohistochemical analysis of paraffin-embedded human parotid gland tissue labeling salivary alpha-amylase + pancreatic alpha-amylase + alpha-carcinoid alpha-amylase with ab201450 at 1/2000 dilution, followed by Goat Anti-Rabbit IgG H&L (HRP) ([ab97051](#)) at 1/500 dilution. Cytoplasmic staining on human parotid gland is observed. Counter stained with Hematoxylin.

Secondary antibody only control: Used PBS instead of primary antibody, secondary antibody is Goat Anti-Rabbit IgG H&L (HRP) ([ab97051](#)) at 1/500 dilution.

Perform heat mediated antigen retrieval with Tris/EDTA buffer pH 9.0 before commencing with IHC staining protocol.

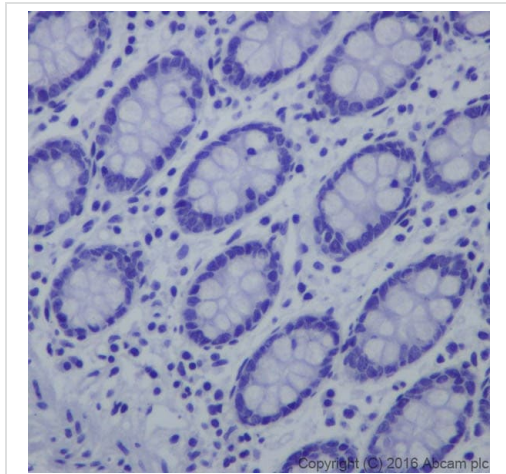


Immunohistochemistry (Formalin/PFA-fixed paraffin-embedded sections) - Anti-Salivary alpha amylase antibody [EPR19605] (ab201450)

Immunohistochemical analysis of paraffin-embedded human pancreas tissue labeling salivary alpha-amylase + pancreatic alpha-amylase + alpha-carcinoid alpha-amylase with ab201450 at 1/2000 dilution, followed by Goat Anti-Rabbit IgG H&L (HRP) ([ab97051](#)) at 1/500 dilution. Cytoplasmic staining on human pancreas is observed. Counter stained with Hematoxylin.

Secondary antibody only control: Used PBS instead of primary antibody, secondary antibody is Goat Anti-Rabbit IgG H&L (HRP) ([ab97051](#)) at 1/500 dilution.

Perform heat mediated antigen retrieval with Tris/EDTA buffer pH 9.0 before commencing with IHC staining protocol.



Immunohistochemistry (Formalin/PFA-fixed paraffin-embedded sections) - Anti-Salivary alpha amylase antibody [EPR19605] (ab201450)

Immunohistochemical analysis of paraffin-embedded human colon tissue with ab201450 at 1/2000 dilution, followed by Goat Anti-Rabbit IgG H&L (HRP) ([ab97051](#)) at 1/500 dilution.

Negative control: No staining on human colon.

Counter stained with Hematoxylin.

Perform heat mediated antigen retrieval with Tris/EDTA buffer pH 9.0 before commencing with IHC staining protocol.

Why choose a recombinant antibody?



Research with confidence
Consistent and reproducible results



Long-term and scalable supply
Recombinant technology



Success from the first experiment
Confirmed specificity



Ethical standards compliant
Animal-free production

Anti-Salivary alpha amylase antibody [EPR19605]
(ab201450)

Please note: All products are "FOR RESEARCH USE ONLY. NOT FOR USE IN DIAGNOSTIC PROCEDURES"

Our Abpromise to you: Quality guaranteed and expert technical support

- Replacement or refund for products not performing as stated on the datasheet
- Valid for 12 months from date of delivery
- Response to your inquiry within 24 hours
- We provide support in Chinese, English, French, German, Japanese and Spanish
- Extensive multi-media technical resources to help you
- We investigate all quality concerns to ensure our products perform to the highest standards

If the product does not perform as described on this datasheet, we will offer a refund or replacement. For full details of the Abpromise, please visit <https://www.abcam.cn/abpromise> or contact our technical team.

Terms and conditions

- Guarantee only valid for products bought direct from Abcam or one of our authorized distributors