

# Anti-Salivary alpha amylase antibody ab125230

**1** [References](#)   **3** [图像](#)

### 概述

产品名称	Anti-Salivary alpha amylase抗体
描述	兔多克隆抗体to Salivary alpha amylase
宿主	Rabbit
经测试应用	适用于: WB, IHC-P
种属反应性	与反应: Mouse, Rat, Human
免疫原	Synthetic peptide corresponding to Human Salivary alpha amylase (N terminal).
阳性对照	IHC-P: Rat spleen tissue. WB: Rat and mouse pancreas tissue lysate, human PANC-1 whole cell lysates. Rat liver tissue lysate, Rat small intestine tissue lysate
常规说明	<p>The Life Science industry has been in the grips of a reproducibility crisis for a number of years. Abcam is leading the way in addressing this with our range of recombinant monoclonal antibodies and knockout edited cell lines for gold-standard validation. Please check that this product meets your needs before purchasing.</p> <p>If you have any questions, special requirements or concerns, please send us an inquiry and/or contact our Support team ahead of purchase. Recommended alternatives for this product can be found below, along with publications, customer reviews and Q&amp;As</p>

### 性能

形式	Liquid
存放说明	Shipped at 4°C. Store at +4°C short term (1-2 weeks). Upon delivery aliquot. Store at -20°C long term.
存储溶液	Preservatives: 0.025% Thimerosal (merthiolate), 0.025% Sodium azide Constituents: 2.5% BSA, 0.45% Sodium chloride, 0.1% Dibasic monohydrogen sodium phosphate
纯度	Immunogen affinity purified
克隆	多克隆
同种型	IgG

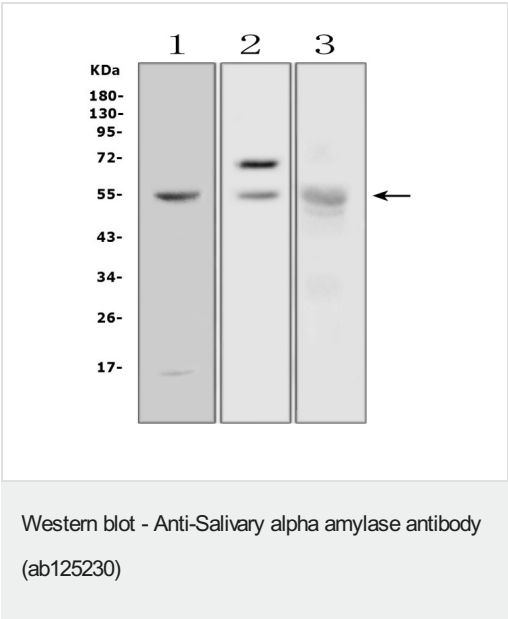
### 应用

<div> <div>The Abpromise guarantee</div> <div>Abpromise™承诺保证使用ab125230于以下的经测试应用</div> </div> <div>“应用说明”部分 下显示的仅为推荐的起始稀释度;实际最佳的稀释度/浓度应由使用者检定。</div>		
应用	Ab评论	说明
WB		Use a concentration of 0.5 - 1 µg/ml. Predicted molecular weight: 57 kDa.
IHC-P		Use a concentration of 1 µg/ml. Perform heat mediated antigen retrieval before commencing with IHC staining protocol.

靶标

序列相似性	Belongs to the glycosyl hydrolase 13 family.
细胞定位	Secreted.

图片



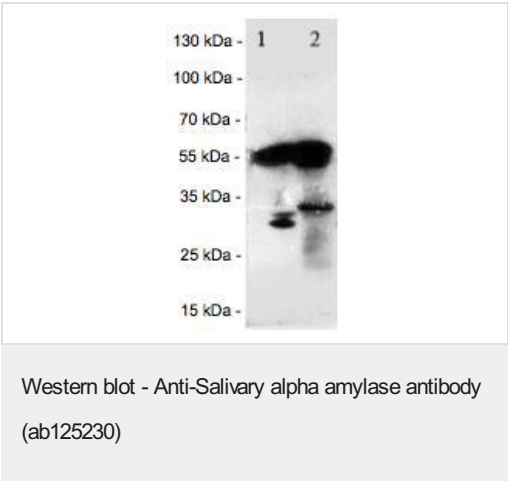
**All lanes** : Anti-Salivary alpha amylase antibody (ab125230) at 0.5 µg/ml

- Lane 1** : human PANC-1 whole cell lysates
- Lane 2** : rat pancreas tissue lysates
- Lane 3** : mouse pancreas tissue lysates

Lysates/proteins at 50 µg per lane.

**Secondary**  
**All lanes** : goat anti-rabbit IgG-HRP at 1/10000 dilution

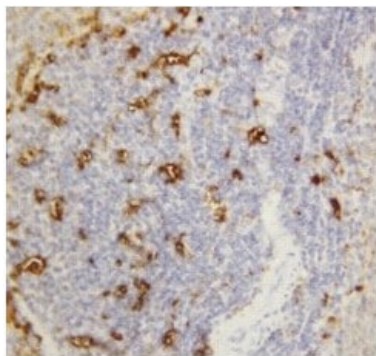
**Predicted band size:** 57 kDa



**All lanes** : Anti-Salivary alpha amylase antibody (ab125230) at 1 µg/ml

- Lane 1** : Rat liver tissue lysate
- Lane 2** : Rat small intestine tissue lysate

**Predicted band size:** 57 kDa



ab125230 at 1µg/ml staining Alpha Amylase in paraffin embedded Rat Spleen Tissue by immunohistochemistry.

Immunohistochemistry (Formalin/PFA-fixed paraffin-embedded sections) - Anti-Salivary alpha amylase antibody (ab125230)

**Please note:** All products are "FOR RESEARCH USE ONLY. NOT FOR USE IN DIAGNOSTIC PROCEDURES"

### Our Abpromise to you: Quality guaranteed and expert technical support

---

- Replacement or refund for products not performing as stated on the datasheet
- Valid for 12 months from date of delivery
- Response to your inquiry within 24 hours
- We provide support in Chinese, English, French, German, Japanese and Spanish
- Extensive multi-media technical resources to help you
- We investigate all quality concerns to ensure our products perform to the highest standards

If the product does not perform as described on this datasheet, we will offer a refund or replacement. For full details of the Abpromise, please visit <https://www.abcam.cn/abpromise> or contact our technical team.

### Terms and conditions

---

- Guarantee only valid for products bought direct from Abcam or one of our authorized distributors