

Anti-SAF-B2 antibody [6F7] ab67344

1 图像

概述

产品名称	Anti-SAF-B2抗体[6F7]
描述	小鼠单克隆抗体[6F7] to SAF-B2
宿主	Mouse
经测试应用	适用于: IHC-P
种属反应性	与反应: Human
免疫原	Synthetic peptide corresponding to Human SAF-B2 aa 345-357. Sequence: PEARDSKEDGRKF
	<div>  Run BLAST with </div> <div>  Run BLAST with </div>
阳性对照	Human brain cortex tissue.
常规说明	<p>The Life Science industry has been in the grips of a reproducibility crisis for a number of years. Abcam is leading the way in addressing this with our range of recombinant monoclonal antibodies and knockout edited cell lines for gold-standard validation. Please check that this product meets your needs before purchasing.</p> <p>If you have any questions, special requirements or concerns, please send us an inquiry and/or contact our Support team ahead of purchase. Recommended alternatives for this product can be found below, along with publications, customer reviews and Q&As</p>

性能

形式	Liquid
存放说明	Shipped at 4°C. Upon delivery aliquot. Store at -20°C. Avoid freeze / thaw cycle.
存储溶液	pH: 7.4 Constituent: PBS
纯度	Protein G purified
克隆	单克隆
克隆编号	6F7
同种型	IgG1

应用

The Abpromise guarantee **Abpromise™**承诺保证使用ab67344于以下的经测试应用

“应用说明”部分 下显示的仅为推荐的起始稀释度;实际最佳的稀释度/浓度应由使用者检定。

应用	Ab评论	说明
IHC-P		

应用说明

ICC/IF: Use at an assay dependent dilution.
 IHC-P: Use at a concentration of 5 µg/ml.
 IP: Use at an assay dependent dilution.
 WB: Use at an assay dependent dilution. Predicted molecular weight: 108 kDa.

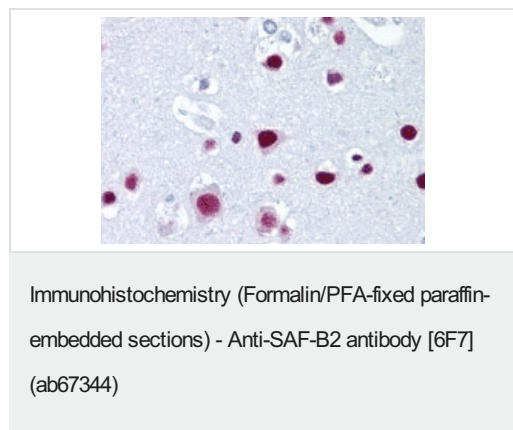
N.B. on SDS PAGE gels, Scaffold attachment factor B2 runs as an approximately 130 kDa protein. This aberrant migration is due to a large number of charged amino acid residues.

Not yet tested in other applications.
 Optimal dilutions/concentrations should be determined by the end user.

靶标

功能	Binds to scaffold/matrix attachment region (S/MAR) DNA. Can function as an estrogen receptor corepressor and can also inhibit cell proliferation.
组织特异性	Expressed at high levels in the CNS and at low levels in the liver. Expressed in a wide number of breast cancer cell lines.
序列相似性	Contains 1 RRM (RNA recognition motif) domain. Contains 1 SAP domain.
翻译后修饰	Phosphorylated upon DNA damage, probably by ATM or ATR.
细胞定位	Cytoplasm. Nucleus.

图片



ab67344 at 5µg/ml dilution staining SAF-B2 in human brain cortex by Immunohistochemistry, Formalin-fixed, Paraffin-embedded tissue.

Please note: All products are "FOR RESEARCH USE ONLY. NOT FOR USE IN DIAGNOSTIC PROCEDURES"

Our Abpromise to you: Quality guaranteed and expert technical support

- Replacement or refund for products not performing as stated on the datasheet
- Valid for 12 months from date of delivery
- Response to your inquiry within 24 hours

- We provide support in Chinese, English, French, German, Japanese and Spanish
- Extensive multi-media technical resources to help you
- We investigate all quality concerns to ensure our products perform to the highest standards

If the product does not perform as described on this datasheet, we will offer a refund or replacement. For full details of the Abpromise, please visit <https://www.abcam.cn/abpromise> or contact our technical team.

Terms and conditions

- Guarantee only valid for products bought direct from Abcam or one of our authorized distributors