

### Anti-SA2 antibody ab4463

★★★★★ [1 Abreviews](#) [9 References](#) [4 图像](#)

#### 概述

产品名称	Anti-SA2抗体
描述	山羊多克隆抗体to SA2
宿主	Goat
特异性	We have data to indicate that this antibody may not cross react with <i>Xenopus laevis</i> . However, this has not been conclusively tested and expression levels may vary in certain cell lines/tissues.
经测试应用	<b>适用于:</b> IP, WB, ICC
种属反应性	<b>与反应:</b> Mouse, Human
免疫原	Synthetic peptide within Human SA2 aa 1100-1200. The exact immunogen sequence used to generate this antibody is proprietary information. If additional detail on the immunogen is needed to determine the suitability of the antibody for your needs, please <b><a href="#">contact</a></b> our Scientific Support team to discuss your requirements. NP_006594.3 (GeneID 10735). Database link: <b><a href="#">Q8N3U4</a></b>
阳性对照	WB: HeLa nuclear cell extract. HeLa, HEK-293T and NIH/3T3 whole cell lysate. ICC: HeLa cells. IP: SA2 IP in HeLa whole cell lysate.
常规说明	<p>The Life Science industry has been in the grips of a reproducibility crisis for a number of years. Abcam is leading the way in addressing this with our range of recombinant monoclonal antibodies and knockout edited cell lines for gold-standard validation. Please check that this product meets your needs before purchasing.</p> <p>If you have any questions, special requirements or concerns, please send us an inquiry and/or contact our Support team ahead of purchase. Recommended alternatives for this product can be found below, along with publications, customer reviews and Q&amp;As</p>

#### 性能

形式	Liquid
存放说明	Shipped at 4°C. Upon delivery aliquot and store at -20°C. Avoid freeze / thaw cycles.
存储溶液	pH: 7 Preservative: 0.1% Sodium azide Constituents: 0.021% PBS, 1.764% Sodium citrate, 1.815% Tris
纯度	Immunogen affinity purified
克隆	多克隆

同种型

IgG

应用

The Abpromise guarantee

Abpromise™承诺保证使用ab4463于以下的经测试应用

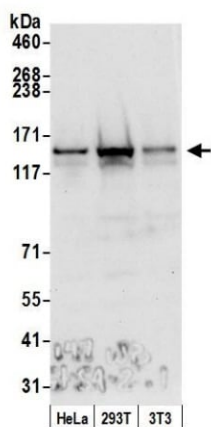
“应用说明”部分 下显示的仅为推荐的起始稀释度;实际最佳的稀释度/浓度应由使用者检定。

应用	Ab评论	说明
IP		Use at 2-10 µg/mg of lysate.
WB		1/1000 - 1/10000. Detects a band of approximately 134 kDa (predicted molecular weight: 134 kDa).
ICC		1/500 - 1/2000.

靶标

功能	Component of cohesin complex, a complex required for the cohesion of sister chromatids after DNA replication. The cohesin complex apparently forms a large proteinaceous ring within which sister chromatids can be trapped. At anaphase, the complex is cleaved and dissociates from chromatin, allowing sister chromatids to segregate. The cohesin complex may also play a role in spindle pole assembly during mitosis.
序列相似性	Belongs to the SCC3 family. Contains 1 SCD (stromalin conservative) domain.
翻译后修饰	Phosphorylated by PLK. The large dissociation of cohesin from chromosome arms during prophase is partly due to its phosphorylation.
细胞定位	Nucleus. Chromosome. Chromosome > centromere. Associates with chromatin. Before prophase it is scattered along chromosome arms. During prophase, most of cohesin complexes dissociate from chromatin probably because of phosphorylation by PLK, except at centromeres, where cohesin complexes remain. At anaphase, the RAD21 subunit of cohesin is cleaved, leading to the dissociation of the complex from chromosomes, allowing chromosome separation. In germ cells, cohesin complex dissociates from chromatin at prophase I, and may be replaced by a meiosis-specific cohesin complex.

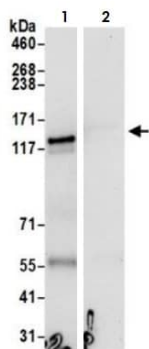
图片



Western blot - Anti-SA2 antibody (ab4463)

Whole cell lysate (50  $\mu$ g) from HeLa, HEK-293T, and NIH/3T3 cells prepared using NETN lysis buffer.

ab4463 used for WB at 0.1  $\mu$ g/ml.



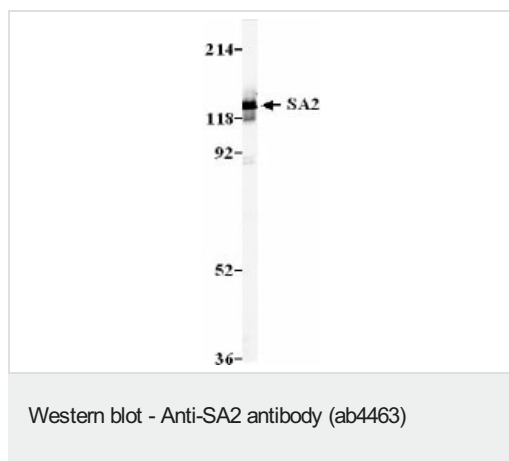
Immunoprecipitation - Anti-SA2 antibody (ab4463)

Whole cell lysate (0.5 or 1.0 mg per IP reaction; 20% of IP loaded) from HeLa cells prepared using NETN lysis buffer.

Lane 1: ab4463 used for IP at 6  $\mu$ g per reaction.

Lane 2: Control IgG.

For blotting immunoprecipitated SA2, ab4463 was used at 1  $\mu$ g/ml.



Nuclear Extract from HeLa cells ( $\sim 5 \times 10^5$  cells).

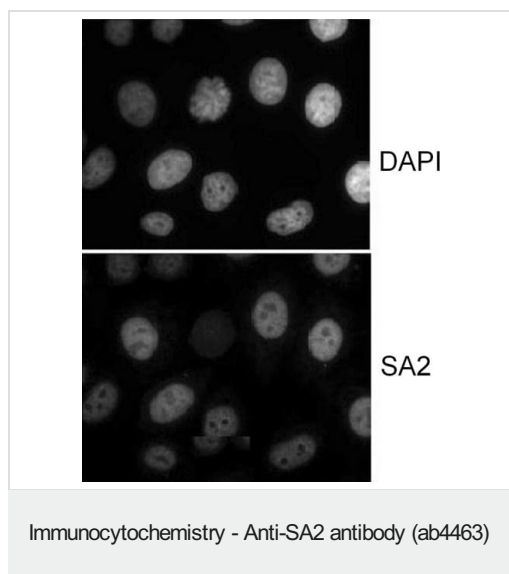
ab4463 at 0.5  $\mu\text{g/ml}$ .

Detection: ECL with 15 second exposure.

Nuclear Extract from HeLa cells ( $\sim 5 \times 10^5$  cells).

ab4463 at 0.5  $\mu\text{g/ml}$ .

Detection: ECL with 15 second exposure.



Immunocytochemistry analysis of HeLa cells (extracted for 5 minutes at 4°C in 0.5% Triton in CSK buffer) labelling SA2 with ab4463 at 1  $\mu\text{g/ml}$ .

**Please note:** All products are "FOR RESEARCH USE ONLY. NOT FOR USE IN DIAGNOSTIC PROCEDURES"

### Our Abpromise to you: Quality guaranteed and expert technical support

- Replacement or refund for products not performing as stated on the datasheet
- Valid for 12 months from date of delivery
- Response to your inquiry within 24 hours
- We provide support in Chinese, English, French, German, Japanese and Spanish
- Extensive multi-media technical resources to help you
- We investigate all quality concerns to ensure our products perform to the highest standards

If the product does not perform as described on this datasheet, we will offer a refund or replacement. For full details of the Abpromise, please visit <https://www.abcam.cn/abpromise> or contact our technical team.

### Terms and conditions

- Guarantee only valid for products bought direct from Abcam or one of our authorized distributors