

# Anti-S1P1/EDG1 antibody ab137467

[3 References](#) [2 图像](#)

### 概述

产品名称	Anti-S1P1/EDG1抗体
描述	兔多克隆抗体to S1P1/EDG1
宿主	Rabbit
经测试应用	适用于: WB, IHC-P
种属反应性	与反应: Mouse, Human
免疫原	Synthetic peptide corresponding to S1P1/EDG1 aa 303-382. Sequence: NSGTNP <del>I</del> IYTLTNKEMRRAFIRIMSCCKCPSGDSAGKFKRPI IAGMEFSR SKSDNSSHPQKDEGDNPETIMSSGNVNSSS  Database link: <a href="#">P21453</a>  <a href="#">Run BLAST with</a>  <a href="#">Run BLAST with</a>
阳性对照	HepG2 whole cell lysate, mouse brain tissue
常规说明	<p>The Life Science industry has been in the grips of a reproducibility crisis for a number of years. Abcam is leading the way in addressing this with our range of recombinant monoclonal antibodies and knockout edited cell lines for gold-standard validation. Please check that this product meets your needs before purchasing.</p> <p>If you have any questions, special requirements or concerns, please send us an inquiry and/or contact our Support team ahead of purchase. Recommended alternatives for this product can be found below, along with publications, customer reviews and Q&amp;As</p>

### 性能

形式	Liquid
存放说明	Shipped at 4°C. Upon delivery aliquot and store at -20°C or -80°C. Avoid repeated freeze / thaw cycles.
存储溶液	pH: 7.00 Preservative: 0.01% Thimerosal (merthiolate) Constituents: 79.99% PBS, 20% Glycerol (glycerin, glycerine)
纯度	Immunogen affinity purified
克隆	多克隆

## 应用

## The Abpromise guarantee

**Abpromise™**承诺保证使用ab137467于以下的经测试应用

“应用说明”部分 下显示的仅为推荐的起始稀释度;实际最佳的稀释度/浓度应由使用者检定。

应用	Ab评论	说明
WB		1/500 - 1/3000. Predicted molecular weight: 43 kDa.
IHC-P		1/100 - 1/1000.

## 靶标

## 功能

Receptor for the lysosphingolipid sphingosine 1-phosphate (S1P). S1P is a bioactive lysophospholipid that elicits diverse physiological effect on most types of cells and tissues. This inducible epithelial cell G-protein-coupled receptor may be involved in the processes that regulate the differentiation of endothelial cells. Seems to be coupled to the G(i) subclass of heteromeric G proteins.

## 组织特异性

Endothelial cells, and to a lesser extent, in vascular smooth muscle cells, fibroblasts, melanocytes, and cells of epithelioid origin.

## 序列相似性

Belongs to the G-protein coupled receptor 1 family.

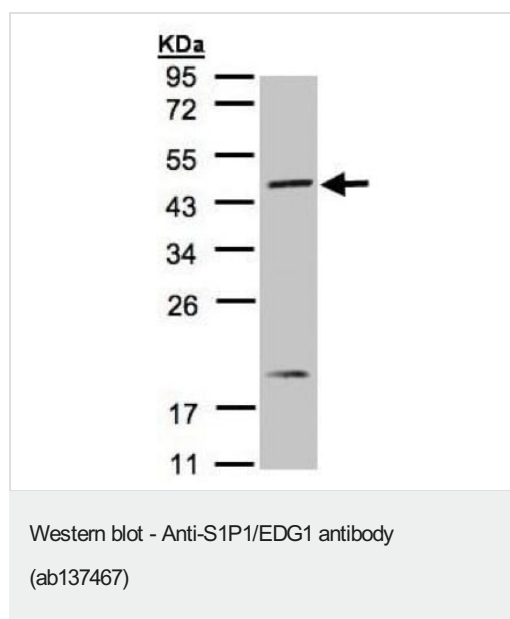
## 翻译后修饰

S1P-induced endothelial cell migration requires the PKB/AKT1-mediated phosphorylation of the third intracellular loop at the Thr-236 residue.

## 细胞定位

Cell membrane.

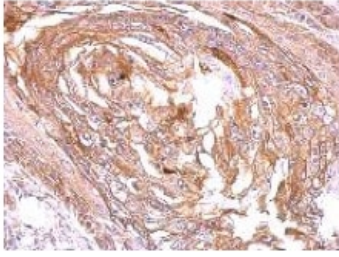
## 图片



Anti-S1P1/EDG1 antibody (ab137467) at 1/1000 dilution + HepG2 whole cell lysate at 30 µg

**Predicted band size: 43 kDa**

12% SDS PAGE



Immunohistochemical analysis of paraffin embedded mouse brain tissue labelling S1P1/EDG1 with ab137467 at a dilution of 1/500.

Immunohistochemistry (Formalin/PFA-fixed paraffin-embedded sections) - Anti-S1P1/EDG1 antibody (ab137467)

**Please note:** All products are "FOR RESEARCH USE ONLY. NOT FOR USE IN DIAGNOSTIC PROCEDURES"

### **Our Abpromise to you: Quality guaranteed and expert technical support**

---

- Replacement or refund for products not performing as stated on the datasheet
- Valid for 12 months from date of delivery
- Response to your inquiry within 24 hours
  
- We provide support in Chinese, English, French, German, Japanese and Spanish
- Extensive multi-media technical resources to help you
- We investigate all quality concerns to ensure our products perform to the highest standards

If the product does not perform as described on this datasheet, we will offer a refund or replacement. For full details of the Abpromise, please visit <https://www.abcam.cn/abpromise> or contact our technical team.

### **Terms and conditions**

---

- Guarantee only valid for products bought direct from Abcam or one of our authorized distributors