

# Anti-S100 Calcium Binding Protein A13/S100A13 antibody [EPR4510] ab109252

敲除验证 重组 RabMAb

[1 References](#) [8 图像](#)

### 概述

产品名称	Anti-S100 Calcium Binding蛋白A13/S100A13抗体[EPR4510]
描述	兔单克隆抗体[EPR4510] to S100 Calcium Binding蛋白A13/S100A13
宿主	Rabbit
经测试应用	适用于: WB, IP, IHC-P, Flow Cyt (Intra), ICC/IF
种属反应性	与反应: Human
免疫原	Synthetic peptide. This information is proprietary to Abcam and/or its suppliers.
阳性对照	EB: HeLa, HEK293T, HUVEC and ECV304 cell lysates; Human thyroid and testis tissue lysates. IHC-P: Human brain and muscle tissues. ICC//IF: HUVEC cells Flow Cyt (intra): HUVEC cells IP: Human heart lysate.
常规说明	<p>This product is a recombinant monoclonal antibody, which offers several advantages including:</p> <ul style="list-style-type: none"><li>- High batch-to-batch consistency and reproducibility</li><li>- Improved sensitivity and specificity</li><li>- Long-term security of supply</li><li>- Animal-free production</li></ul> <p>For more information <a href="#">see here</a>.</p> <p>Our RabMAb<sup>®</sup> technology is a patented hybridoma-based technology for making rabbit monoclonal antibodies. For details on our patents, please refer to <a href="#">RabMAb<sup>®</sup> patents</a>.</p> <p>Mouse, Rat: We have preliminary internal testing data to indicate this antibody may not react with these species. Please contact us for more information.</p>

### 性能

形式	Liquid
存放说明	Shipped at 4°C. Store at -20°C. Stable for 12 months at -20°C.
存储溶液	pH: 7.20 Preservative: 0.05% Sodium azide Constituents: 0.1% BSA, 40% Glycerol (glycerin, glycerine), 9.85% Tris glycine, 50% Tissue culture supernatant

纯度	Protein A purified
克隆	单克隆
克隆编号	EPR4510
同种型	IgG

## 应用

**The Abpromise guarantee**      **Abpromise™**承诺保证使用ab109252于以下的经测试应用

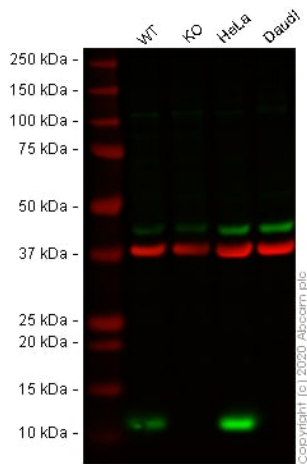
“应用说明”部分 下显示的仅为推荐的起始稀释度;实际最佳的稀释度/浓度应由使用者检定。

应用	Ab评论	说明
WB		1/1000 - 1/10000. Predicted molecular weight: 11 kDa.
IP		1/10 - 1/100.
IHC-P		1/250 - 1/500. Perform heat mediated antigen retrieval before commencing with IHC staining protocol. Use of a HRP/AP polymerized antibody recommended.
Flow Cyt (Intra)		1/10 - 1/100. <b>ab172730</b> - Rabbit monoclonal IgG, is suitable for use as an isotype control with this antibody.
ICC/IF		1/100 - 1/250.

## 靶标

功能	Plays a role in the export of proteins that lack a signal peptide and are secreted by an alternative pathway. Binds two calcium ions per subunit. Binds one copper ion. Binding of one copper ion does not interfere with calcium binding. Required for the copper-dependent stress-induced export of IL1A and FGF1. The calcium-free protein binds to lipid vesicles containing phosphatidylserine, but not to vesicles containing phosphatidylcholine.
组织特异性	Expressed in heart and skeletal muscle.
序列相似性	Belongs to the S-100 family. Contains 2 EF-hand domains.
细胞定位	Cytoplasm. Secreted. Secretion is mediated by exposure to stress and requires copper ions.

## 图片



Western blot - Anti-S100 Calcium Binding Protein A13/S100A13 antibody [EPR4510] (ab109252)

**All lanes** : Anti-S100 Calcium Binding Protein A13/S100A13 antibody [EPR4510] (ab109252) at 1/1000 dilution

**Lane 1** : Wild-type HEK-293T cell lysate

**Lane 2** : S100A13 knockout HEK-293T cell lysate

**Lane 3** : HeLa cell lysate

**Lane 4** : Daudi cell lysate

Lysates/proteins at 20 µg per lane.

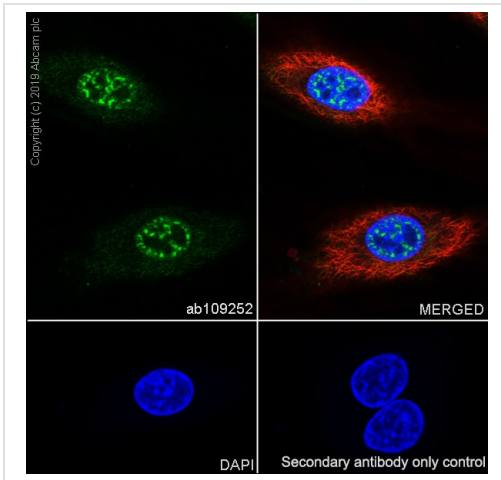
Performed under reducing conditions.

**Predicted band size:** 11 kDa

**Observed band size:** 13 kDa

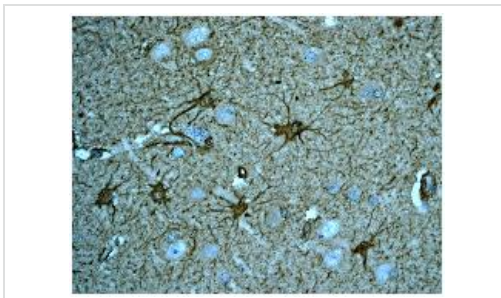
**Lanes 1 - 4:** Merged signal (red and green). Green - ab109252 observed at 13 kDa. Red - loading control **ab8245** (Mouse anti-GAPDH antibody [6C5]) observed at 37 kDa.

ab109252 was shown to react with S100 Calcium Binding Protein A13/S100A13 in wild-type HEK-293T cells in Western blot with loss of signal observed in S100A13 knockout cell line **ab266065** (S100A13 knockout cell lysate **ab258183**). Wild-type HEK-293T and S100A13 knockout cell lysates were subjected to SDS-PAGE. Membranes were blocked in 3 % milk in TBS-T (0.1 % Tween®) before incubation with ab109252 and **ab8245** (Mouse anti-GAPDH antibody [6C5]) overnight at 4°C at a 1 in 1000 dilution and a 1 in 20000 dilution respectively. Blots were incubated with Goat anti-Rabbit IgG H&L (IRDye® 800CW) preabsorbed (**ab216773**) and Goat anti-Mouse IgG H&L (IRDye® 680RD) preabsorbed (**ab216776**) secondary antibodies at 1 in 20000 dilution for 1 h at room temperature before imaging.



Immunocytochemistry/ Immunofluorescence - Anti-S100 Calcium Binding Protein A13/S100A13 antibody [EPR4510] (ab109252)

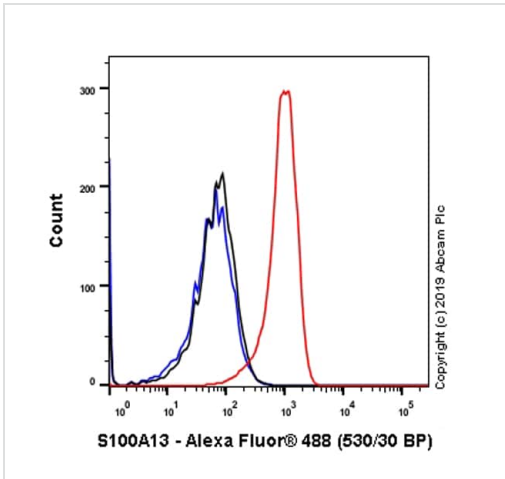
Immunocytochemistry/ Immunofluorescence analysis of HUVEC (human umbilical vein endothelial cell) cells labeling S100 Calcium Binding Protein A13/S100A13 with purified ab109252 at 1/100 dilution (10 µg/mL). Cells were fixed in 4% Paraformaldehyde and permeabilized with 0.1% tritonX-100. Cells were counterstained with **ab195889** Anti-alpha Tubulin antibody [DM1A] - Microtubule Marker (Alexa Fluor® 594) 1/200 (2.5 µg/mL). Goat anti rabbit IgG (Alexa Fluor® 488, **ab150077**) was used as the secondary antibody at 1/1000 (2 µg/mL) dilution. DAPI (blue) was used as nuclear counterstain. **ab195889** Anti-alpha Tubulin antibody [DM1A] - Microtubule Marker (Alexa Fluor® 594) 1/200 (2.5 µg/mL) was used as the secondary antibody only control.



Immunohistochemistry (Formalin/PFA-fixed paraffin-embedded sections) - Anti-S100 Calcium Binding Protein A13/S100A13 antibody [EPR4510] (ab109252)

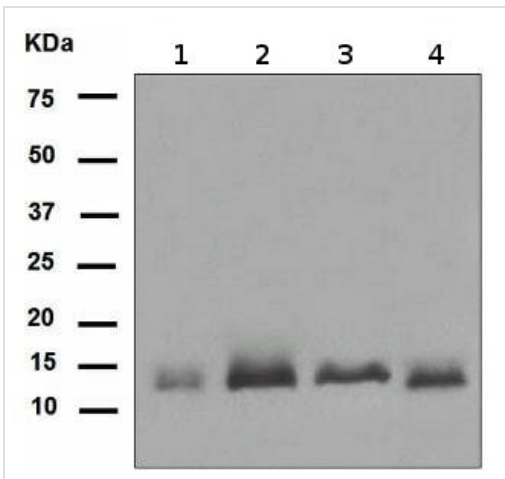
ab109252, at a 1/250 dilution, staining S100 Calcium Binding Protein A13/S100A13 in Human brain, by Immunohistochemistry, Paraffin-embedded tissue.

Perform heat mediated antigen retrieval before commencing with IHC staining protocol.



Intracellular Flow Cytometry analysis of HUVEC (Human umbilical vein endothelial cell) cells labeling S100 Calcium Binding Protein A13/S100A13 with purified ab109252 at 1/100 dilution (10 µg/mL) (Red). Cells were fixed with 4% Paraformaldehyde and permeabilised with 90% Methanol. A Goat anti rabbit IgG (Alexa Fluor® 488, **ab150077**) secondary antibody was used at 1/2000. Isotype control - Rabbit monoclonal IgG (Black). Unlabeled control - Cells without incubation with primary antibody and secondary antibody (Blue).

Flow Cytometry (Intracellular) - Anti-S100 Calcium Binding Protein A13/S100A13 antibody [EPR4510] (ab109252)



**All lanes** : Anti-S100 Calcium Binding Protein A13/S100A13 antibody [EPR4510] (ab109252) at 1/1000 dilution

**Lane 1** : Human thyroid tissue lysate

**Lane 2** : Human testis tissue lysate

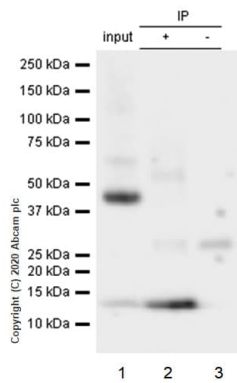
**Lane 3** : HUVEC lysate

**Lane 4** : ECV304 lysate

Lysates/proteins at 10 µg per lane.

**Predicted band size:** 11 kDa

Western blot - Anti-S100 Calcium Binding Protein A13/S100A13 antibody [EPR4510] (ab109252)



Immunoprecipitation - Anti-S100 Calcium Binding Protein A13/S100A13 antibody [EPR4510] (ab109252)

Purified ab109252 at 1/50 dilution (2µg) immunoprecipitating S100 Calcium Binding Protein A13/S100A13 in Human heart lysate.

Lane 1 (input): Human heart lysate 10µg

Lane 2 (+): ab109252 + Human heart lysate.

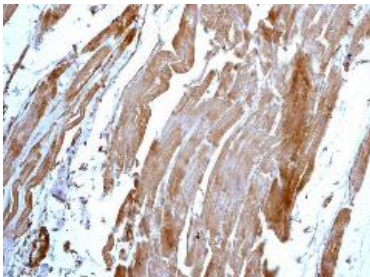
Lane 3 (-): Rabbit monoclonal IgG (**ab172730**) instead of ab109252 in Human heart lysate.

VeriBlot for IP Detection Reagent (HRP) (**ab131366**) (1/1000 dilution) was used for Western blotting.

Blocking Buffer and concentration: 5% NFDm/TBST.

Diluting buffer and concentration: 5% NFDm/TBST.

Observed band size: 11 kDa







Immunohistochemistry (Formalin/PFA-fixed paraffin-embedded sections) - Anti-S100 Calcium Binding Protein A13/S100A13 antibody [EPR4510] (ab109252)

ab109252, at a 1/250 dilution, staining S100 Calcium Binding Protein A13/S100A13 in Human muscle, by Immunohistochemistry, Paraffin-embedded tissue.

Perform heat mediated antigen retrieval before commencing with IHC staining protocol.

### Why choose a recombinant antibody?

 <p><b>Research with confidence</b> Consistent and reproducible results</p>	 <p><b>Long-term and scalable supply</b> Recombinant technology</p>
 <p><b>Success from the first experiment</b> Confirmed specificity</p>	 <p><b>Ethical standards compliant</b> Animal-free production</p>

Anti-S100 Calcium Binding Protein A13/S100A13 antibody [EPR4510] (ab109252)

## **Our Abpromise to you: Quality guaranteed and expert technical support**

---

- Replacement or refund for products not performing as stated on the datasheet
- Valid for 12 months from date of delivery
- Response to your inquiry within 24 hours
  
- We provide support in Chinese, English, French, German, Japanese and Spanish
- Extensive multi-media technical resources to help you
- We investigate all quality concerns to ensure our products perform to the highest standards

If the product does not perform as described on this datasheet, we will offer a refund or replacement. For full details of the Abpromise, please visit <https://www.abcam.cn/abpromise> or contact our technical team.

## **Terms and conditions**

---

- Guarantee only valid for products bought direct from Abcam or one of our authorized distributors