


Anti-S100 beta antibody ab41548

★★★★★ 17 Abreviews 98 References 3 图像

概述	
产品名称	Anti-S100 beta抗体
描述	兔多克隆抗体to S100 beta
宿主	Rabbit
特异性	From Jan 2024, QC testing of replenishment batches of this polyclonal changed. All tested and expected application and reactive species combinations are still covered by our Abcam product promise. However, we no longer test all applications. For more information on a specific batch, please contact our Scientific Support who will be happy to help. You may also be interested in our alternative recombinant antibody, ab52642 .
经测试应用	适用于: IHC-P, WB 不适用于: ICC/IF
种属反应性	与反应: Mouse, Rat, Zebrafish 预测可用于: Rabbit, Cow, Human, Pig, Chinese hamster 
免疫原	Synthetic peptide corresponding to Rat S100 beta aa 50 to the C-terminus (C terminal) conjugated to keyhole limpet haemocyanin. (Peptide available as ab41547)
常规说明	<p>The Life Science industry has been in the grips of a reproducibility crisis for a number of years. Abcam is leading the way in addressing this with our range of recombinant monoclonal antibodies and knockout edited cell lines for gold-standard validation. Please check that this product meets your needs before purchasing.</p> <p>If you have any questions, special requirements or concerns, please send us an inquiry and/or contact our Support team ahead of purchase. Recommended alternatives for this product can be found below, along with publications, customer reviews and Q&As</p>
性能	
形式	Liquid
存放说明	Shipped at 4°C. Store at +4°C short term (1-2 weeks). Upon delivery aliquot. Store at -20°C or -80°C. Avoid freeze / thaw cycle.
存储溶液	pH: 7.40 Preservative: 0.02% Sodium azide Constituent: PBS

Batches of this product that have a concentration < 1mg/ml may have BSA added as a stabilising agent. If you would like information about the formulation of a specific lot, please contact our scientific support team who will be happy to help.

纯度	Immunogen affinity purified
克隆	多克隆
同种型	IgG

应用

The Abpromise guarantee **Abpromise™**承诺保证使用ab41548于以下的经测试应用

“应用说明”部分 下显示的仅为推荐的起始稀释度;实际最佳的稀释度/浓度应由使用者检定。

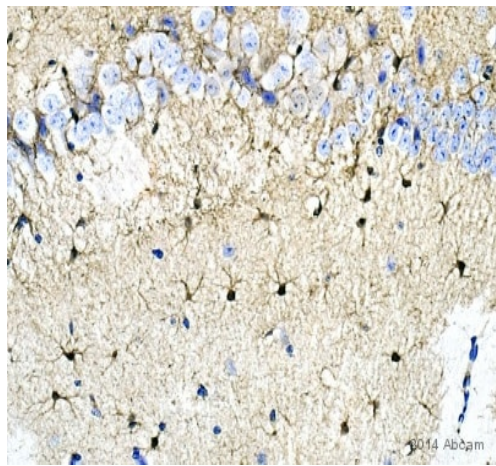
应用	Ab评论	说明
IHC-P	★★★★★ (10)	Use at an assay dependent concentration.
WB	★★★★★ (1)	Use a concentration of 1 µg/ml. Detects a band of approximately 9 kDa (predicted molecular weight: 11 kDa).

应用说明 Is unsuitable for ICC/IF.

靶标

功能	Weakly binds calcium but binds zinc very tightly-distinct binding sites with different affinities exist for both ions on each monomer. Physiological concentrations of potassium ion antagonize the binding of both divalent cations, especially affecting high-affinity calcium-binding sites. Binds to and initiates the activation of STK38 by releasing autoinhibitory intramolecular interactions within the kinase. Interaction with AGER after myocardial infarction may play a role in myocyte apoptosis by activating ERK1/2 and p53/TP53 signaling.
组织特异性	Although predominant among the water-soluble brain proteins, S100 is also found in a variety of other tissues.
序列相似性	Belongs to the S-101 family. Contains 2 EF-hand domains.
细胞定位	Cytoplasm. Nucleus.

图片

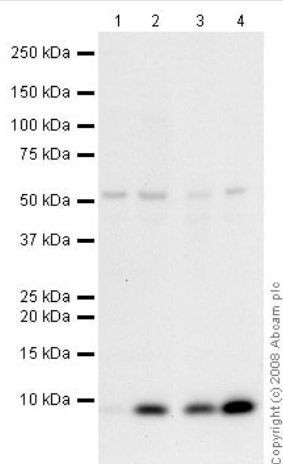


Immunohistochemistry (Formalin/PFA-fixed paraffin-embedded sections) - Anti-S100 beta antibody - Astrocyte Marker (ab41548)

This image is courtesy of an Abreview submitted by Carl Hobbs

ab41548 staining S100 beta in mouse brain tissue sections by Immunohistochemistry (IHC-P - paraformaldehyde-fixed, paraffin-embedded sections). Tissue was fixed with formaldehyde and blocked with 1% BSA for 10 minutes; antigen retrieval was by heat mediation in citric acid. Samples were incubated with primary antibody (1/10000 in TBS/BSA/azide) for 2 hours at 21°C. A Biotin-conjugated goat anti-rabbit IgG polyclonal (1/250) was used as the secondary antibody.

At this dilution factor, there is very good delineation of astrocyte processes.



Western blot - Anti-S100 beta antibody - Astrocyte Marker (ab41548)

All lanes : Anti-S100 beta antibody (ab41548) at 1 µg/ml

Lane 1 : Brain (Mouse) Tissue Lysate

Lane 2 : Brain (Rat) Tissue Lysate

Lane 3 : Spinal Cord (Mouse) Tissue Lysate

Lane 4 : Spinal Cord (Rat) Tissue Lysate

Lysates/proteins at 10 µg per lane.

Secondary

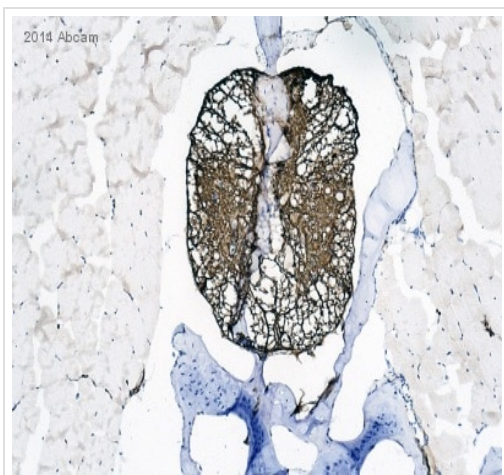
All lanes : Goat polyclonal to Rabbit IgG - H&L - Pre-Adsorbed (HRP) at 1/3000 dilution

Performed under reducing conditions.

Predicted band size: 11 kDa

Observed band size: 9 kDa

Additional bands at: 52 kDa. We are unsure as to the identity of these extra bands.



Immunohistochemistry (Formalin/PFA-fixed paraffin-embedded sections) - Anti-S100 beta antibody - Astrocyte Marker (ab41548)

Image courtesy of Carl Hobbs, King College London, U.K.

ab41548 staining S100 beta in Zebrafish body, showing T/S of spinal cord region by Immunohistochemistry (IHC-P - paraformaldehyde-fixed, paraffin-embedded sections). Tissue was fixed with formaldehyde and blocked with 1% BSA for 10 minutes; antigen retrieval was by heat mediation in citric acid. Samples were incubated with primary antibody (1/10000 in TBS/BSA/azide) for 2 hours at 21°C. A Biotin-conjugated goat anti-rabbit IgG polyclonal (1/250) was used as the secondary antibody.

Please note: All products are "FOR RESEARCH USE ONLY. NOT FOR USE IN DIAGNOSTIC PROCEDURES"

Our Abpromise to you: Quality guaranteed and expert technical support

- Replacement or refund for products not performing as stated on the datasheet
- Valid for 12 months from date of delivery
- Response to your inquiry within 24 hours
- We provide support in Chinese, English, French, German, Japanese and Spanish
- Extensive multi-media technical resources to help you
- We investigate all quality concerns to ensure our products perform to the highest standards

If the product does not perform as described on this datasheet, we will offer a refund or replacement. For full details of the Abpromise, please visit <https://www.abcam.cn/abpromise> or contact our technical team.

Terms and conditions

- Guarantee only valid for products bought direct from Abcam or one of our authorized distributors