

Anti-S100 alpha 2/S100A2 antibody ab103423

[2 Abreviews](#) [3 图像](#)

概述

产品名称	Anti-S100 alpha 2/S100A2抗体
描述	兔多克隆抗体to S100 alpha 2/S100A2
宿主	Rabbit
经测试应用	适用于: WB
种属反应性	与反应: Mouse, Human
免疫原	Recombinant full length protein within Human S100 alpha 2/S100A2 aa 1-100. The exact immunogen sequence used to generate this antibody is proprietary information. If additional detail on the immunogen is needed to determine the suitability of the antibody for your needs, please contact our Scientific Support team to discuss your requirements. (AAH02829) Database link: P29034
	 Run BLAST with  Run BLAST with
阳性对照	Human pancreas and Mouse liver tissue lysates; S100 alpha 2/S100A2 transfected 293T cell lysate
常规说明	<p>The Life Science industry has been in the grips of a reproducibility crisis for a number of years. Abcam is leading the way in addressing this with our range of recombinant monoclonal antibodies and knockout edited cell lines for gold-standard validation. Please check that this product meets your needs before purchasing.</p> <p>If you have any questions, special requirements or concerns, please send us an inquiry and/or contact our Support team ahead of purchase. Recommended alternatives for this product can be found below, along with publications, customer reviews and Q&As</p>

性能

形式	Liquid
存放说明	Shipped at 4°C. Upon delivery aliquot. Store at -20°C or -80°C. Avoid freeze / thaw cycle.
存储溶液	pH: 7.40 Constituent: 100% PBS
纯度	Protein A purified
克隆	多克隆
同种型	IgG

应用

The Abpromise guarantee **Abpromise™**承诺保证使用ab103423于以下的经测试应用

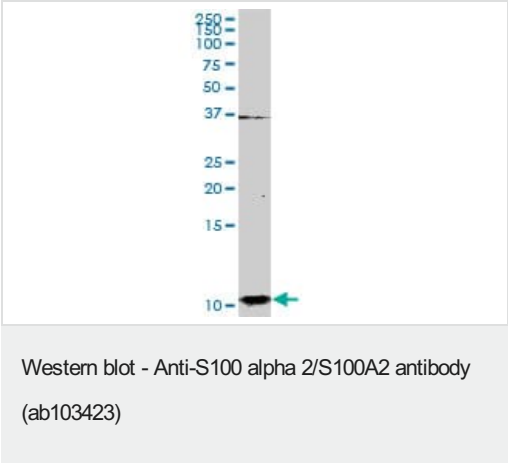
“应用说明”部分 下显示的仅为推荐的起始稀释度;实际最佳的稀释度/浓度应由使用者检定。

应用	Ab评论	说明
WB		1/500 - 1/1000. Predicted molecular weight: 11 kDa.

靶标

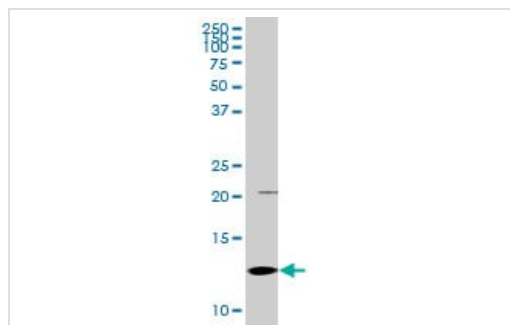
功能	May function as calcium sensor and modulator, contributing to cellular calcium signaling. May function by interacting with other proteins, such as TPR-containing proteins, and indirectly play a role in many physiological processes. May also play a role in suppressing tumor cell growth.
组织特异性	A subset of epithelial cells including normal human mammary epithelial cells and keratinocytes.
序列相似性	Belongs to the S-100 family. Contains 2 EF-hand domains.
发展阶段	Preferentially expressed in normal human mammary epithelial cells as opposed to tumor-derived ones. The level of S100L was shown to correlate inversely with tumor progression.

图片



Anti-S100 alpha 2/S100A2 antibody (ab103423) at 1/500 dilution + Human pancreas tissue lysate at 50 µg

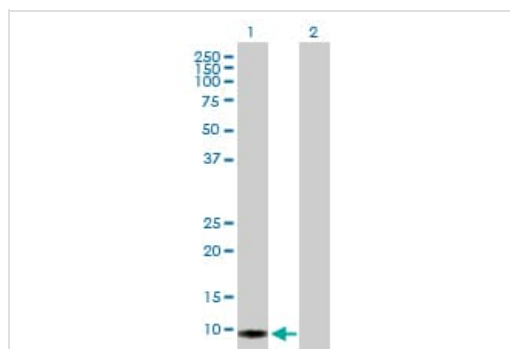
Predicted band size: 11 kDa



Western blot - Anti-S100 alpha 2/S100A2 antibody (ab103423)

Anti-S100 alpha 2/S100A2 antibody (ab103423) at 1/500 dilution +
Mouse liver tissue lysate at 50 µg

Predicted band size: 11 kDa



Western blot - Anti-S100 alpha 2/S100A2 antibody (ab103423)

All lanes : Anti-S100 alpha 2/S100A2 antibody (ab103423) at
1/500 dilution

Lane 1 : S100 alpha 2/S100A2 transfected 293T cell lysate

Lane 2 : Non-transfected 293T cell lysate

Lysates/proteins at 25 µg per lane.

Predicted band size: 11 kDa

Please note: All products are "FOR RESEARCH USE ONLY. NOT FOR USE IN DIAGNOSTIC PROCEDURES"

Our Abpromise to you: Quality guaranteed and expert technical support

- Replacement or refund for products not performing as stated on the datasheet
- Valid for 12 months from date of delivery
- Response to your inquiry within 24 hours
- We provide support in Chinese, English, French, German, Japanese and Spanish
- Extensive multi-media technical resources to help you
- We investigate all quality concerns to ensure our products perform to the highest standards

If the product does not perform as described on this datasheet, we will offer a refund or replacement. For full details of the Abpromise, please visit <https://www.abcam.cn/abpromise> or contact our technical team.

Terms and conditions

- Guarantee only valid for products bought direct from Abcam or one of our authorized distributors