


Anti-Rubicon/Baron antibody ab156052

★★★★★ [5 Abreviews](#) [4 References](#) [2 图像](#)

概述	
产品名称	Anti-Rubicon/Baron抗体
描述	兔多克隆抗体to Rubicon/Baron
宿主	Rabbit
特异性	From Jan 2024, QC testing of replenishment batches of this polyclonal changed. All tested and expected application and reactive species combinations are still covered by our Abcam product promise. However, we no longer test all applications. For more information on a specific batch, please contact our Scientific Support who will be happy to help.
经测试应用	适用于: WB, ICC/IF
种属反应性	与反应: Mouse, Human 预测可用于: Rat, Rabbit, Horse, Cow, Chimpanzee, Macaque monkey, Gorilla, Chinese hamster, Orangutan 
免疫原	Synthetic peptide. This information is proprietary to Abcam and/or its suppliers.
阳性对照	This antibody gave a positive signal in the following tissue lysates: Mouse Liver; Mouse Kidney; Human Liver; Human Kidney. This antibody gave a positive result when used in the following formaldehyde fixed cell lines: HepG2.
常规说明	<p>The Life Science industry has been in the grips of a reproducibility crisis for a number of years. Abcam is leading the way in addressing this with our range of recombinant monoclonal antibodies and knockout edited cell lines for gold-standard validation. Please check that this product meets your needs before purchasing.</p> <p>If you have any questions, special requirements or concerns, please send us an inquiry and/or contact our Support team ahead of purchase. Recommended alternatives for this product can be found below, along with publications, customer reviews and Q&As</p>
性能	
形式	Liquid
存放说明	Shipped at 4°C. Store at +4°C short term (1-2 weeks). Upon delivery aliquot. Store at -20°C or -80°C. Avoid freeze / thaw cycle.
存储溶液	pH: 7.40 Preservative: 0.02% Sodium azide Constituent: PBS

Batches of this product that have a concentration < 1mg/ml may have BSA added as a stabilising agent. If you would like information about the formulation of a specific lot, please contact our scientific support team who will be happy to help.

纯度	Immunogen affinity purified
克隆	多克隆
同种型	IgG

应用

The Abpromise guarantee

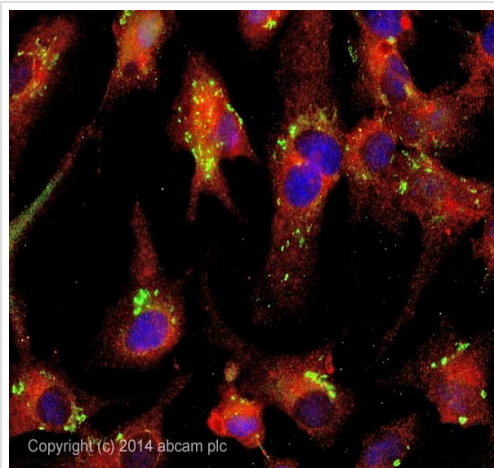
Abpromise™承诺保证使用ab156052于以下的经测试应用

“应用说明”部分 下显示的仅为推荐的起始稀释度;实际最佳的稀释度/浓度应由使用者检定。

应用	Ab评论	说明
WB	★★★★☆ (3)	Use a concentration of 1 µg/ml. Detects a band of approximately 106 kDa (predicted molecular weight: 106 kDa).
ICC/IF	★★★★☆ (1)	Use a concentration of 10 µg/ml.

靶标

图片

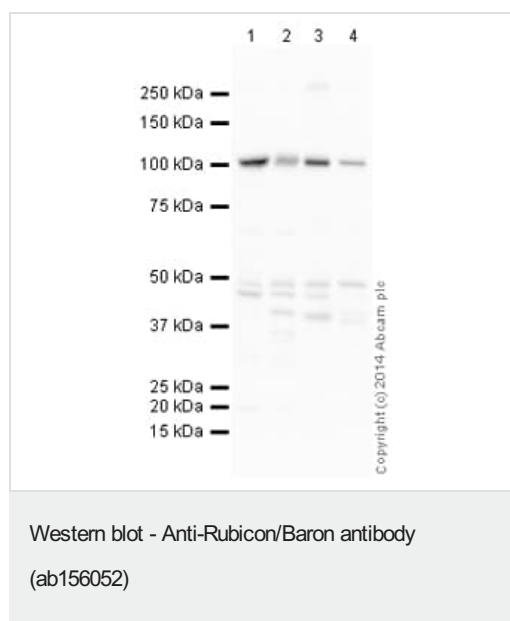


Copyright (c) 2014 abcam plc

Immunocytochemistry/ Immunofluorescence - Anti-Rubicon/Baron antibody (ab156052)

ICC/IF image of ab156052 stained HepG2 cells. The cells were 4% formaldehyde fixed (10 min) and then incubated in 1%BSA / 10% normal goat serum / 0.3M glycine in 0.1% PBS-Tween for 1h to permeabilise the cells and block non-specific protein-protein interactions. The cells were then incubated with the antibody ab156052 at 10µg/ml overnight at +4°C. The secondary antibody (pseudo-colored green) was Alexa Fluor® 488 goat anti- rabbit (**ab150081**) IgG (H+L) preadsorbed, used at a 1/1000 dilution for 1h.

ab50533 (Mouse monoclonal [Rab7-117] to RAB7) was also incubated along with ab156052 to demonstrate antigen co-localization. Signal detected using Goat polyclonal Secondary Antibody to Mouse IgG - H&L (Alexa Fluor® 594), pre-adsorbed (**ab150120**) (pseudo-colored red) DAPI was used to stain the cell nuclei (pseudo-colored blue) at a concentration of 1.43µM for 1hour at room temperature.



All lanes : Anti-Rubicon/Baron antibody (ab156052) at 1 µg/ml

Lane 1 : Liver (Mouse) Tissue Lysate

Lane 2 : Kidney (Mouse) Tissue Lysate

Lane 3 : Human liver tissue lysate - total protein ([ab29889](#))

Lane 4 : Human kidney tissue lysate - total protein ([ab30203](#))

Lysates/proteins at 10 µg per lane.

Secondary

All lanes : Goat Anti-Rabbit IgG H&L (HRP) ([ab97051](#)) at 1/10000 dilution

Developed using the ECL technique.

Performed under reducing conditions.

Predicted band size: 106 kDa

Observed band size: 106 kDa

Additional bands at: 42 kDa (possible non-specific binding), 48 kDa (possible non-specific binding)

Exposure time: 30 seconds

This blot was produced using a 4-12% Bis-tris gel under the MOPS buffer system. The gel was run at 200V for 50 minutes before being transferred onto a Nitrocellulose membrane at 30V for 70 minutes. The membrane was then blocked for an hour using 5% Bovine Serum Albumin before being incubated with ab156052 overnight at 4°C. Antibody binding was detected using an anti-rabbit antibody conjugated to HRP, and visualised using ECL development solution.

Please note: All products are "FOR RESEARCH USE ONLY. NOT FOR USE IN DIAGNOSTIC PROCEDURES"

Our Abpromise to you: Quality guaranteed and expert technical support

- Replacement or refund for products not performing as stated on the datasheet
- Valid for 12 months from date of delivery
- Response to your inquiry within 24 hours

- We provide support in Chinese, English, French, German, Japanese and Spanish
- Extensive multi-media technical resources to help you
- We investigate all quality concerns to ensure our products perform to the highest standards

If the product does not perform as described on this datasheet, we will offer a refund or replacement. For full details of the Abpromise, please visit <https://www.abcam.cn/abpromise> or contact our technical team.

Terms and conditions

- Guarantee only valid for products bought direct from Abcam or one of our authorized distributors