

### Anti-Rubella Virus capsid antibody [9B11] ab34749

★★★★★ [3 Abreviews](#) [10 References](#) [1 图像](#)

#### 概述

<b>产品名称</b>	Anti-Rubella Virus capsid抗体[9B11]
<b>描述</b>	小鼠单克隆抗体[9B11] to Rubella Virus capsid
<b>宿主</b>	Mouse
<b>经测试应用</b>	<b>适用于:</b> Indirect ELISA, WB
<b>种属反应性</b>	<b>与反应:</b> Rubella virus
<b>免疫原</b>	Recombinant full length protein corresponding to Rubella Virus capsid.
<b>常规说明</b>	<p>This product was changed from ascites to tissue culture supernatant on 28/11/2017. Lot numbers higher than GR120838-1 and GR210838-5 will be from tissue culture supernatant. Please note that the dilutions may need to be adjusted accordingly.</p> <p>The Life Science industry has been in the grips of a reproducibility crisis for a number of years. Abcam is leading the way in addressing this with our range of recombinant monoclonal antibodies and knockout edited cell lines for gold-standard validation. Please check that this product meets your needs before purchasing.</p> <p>If you have any questions, special requirements or concerns, please send us an inquiry and/or contact our Support team ahead of purchase. Recommended alternatives for this product can be found below, along with publications, customer reviews and Q&amp;As</p>

#### 性能

<b>形式</b>	Liquid
<b>存放说明</b>	Shipped at 4°C. Store at +4°C short term (1-2 weeks). Upon delivery aliquot. Store at -20°C or -80°C. Avoid freeze / thaw cycle.
<b>存储溶液</b>	pH: 7.2 Preservative: 0.1% Sodium azide Constituent: PBS
<b>纯度</b>	Protein A purified
<b>克隆</b>	单克隆
<b>克隆编号</b>	9B11
<b>骨髓瘤</b>	Sp2/0
<b>同种型</b>	IgG1

## 应用

The Abpromise guarantee **Abpromise™**承诺保证使用ab34749于以下的经测试应用

“应用说明”部分 下显示的仅为推荐的起始稀释度;实际最佳的稀释度/浓度应由使用者检定。

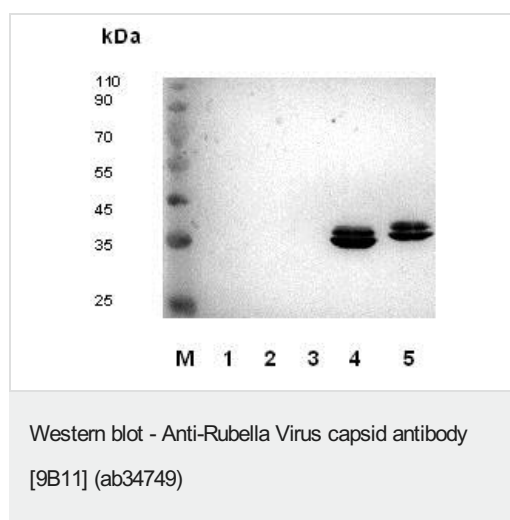
应用	Ab评论	说明
Indirect ELISA		1/1000 - 1/10000.
WB	★★★★★ (1)	1/1000 - 1/5000. Predicted molecular weight: 115 kDa.

## 靶标

**相关性** Rubella virus is the only member of the Rubrivirus genus of the Togavirus family. Unlike most Togaviruses it is NOT arthropod borne, but is acquired via the respiratory route. It causes German measles ( a mild contagious eruptive disease, capable of producing congenital defects in infants born to mothers infected during the first three months of pregnancy). Rubella virus is an enveloped positive-strand RNA virus. The genome encodes two open reading frames (ORFs): the 5'-proximal ORF encodes viral nonstructural proteins (NSP) that are responsible for viral genome replication, while the 3'-proximal ORF encodes three virion structural proteins (SP), the capsid protein (CP), and the two envelope glycoproteins, E2 and E1. During virus assembly, the capsid interacts with genomic RNA to form nucleocapsids. The rubella virus (RV) structural proteins: capsid, E2, and E1 are synthesized as a polyprotein precursor. The signal peptide that initiates translocation of E2 into the lumen of the endoplasmic reticulum remains attached to the carboxy terminus of the capsid protein after cleavage by signal peptidase.

**细胞定位** Cytoplasmic in host cells concentrated around Golgi region and mitochondrion.

## 图片



**All lanes :** Anti-Rubella Virus capsid antibody [9B11] (ab34749) at 1 µg/ml

**Lane 1 :** Prestained M.Wt markers

**Lane 2 :** crude yeast cell lysate [mock control]

**Lanes 3-4 :** irrelevant viral proteins

**Lane 5 :** recombinant purified rubella capsid protein

**Lane 6 :** crude lysate of transformed yeast cells expressing rubella capsid protein

**Predicted band size:** 115 kDa

**Please note:** All products are "FOR RESEARCH USE ONLY. NOT FOR USE IN DIAGNOSTIC PROCEDURES"

## **Our Abpromise to you: Quality guaranteed and expert technical support**

---

- Replacement or refund for products not performing as stated on the datasheet
- Valid for 12 months from date of delivery
- Response to your inquiry within 24 hours
  
- We provide support in Chinese, English, French, German, Japanese and Spanish
- Extensive multi-media technical resources to help you
- We investigate all quality concerns to ensure our products perform to the highest standards

If the product does not perform as described on this datasheet, we will offer a refund or replacement. For full details of the Abpromise, please visit <https://www.abcam.cn/abpromise> or contact our technical team.

## **Terms and conditions**

---

- Guarantee only valid for products bought direct from Abcam or one of our authorized distributors