


Anti-RTF1 antibody ab99362

1 [References](#) **3** [图像](#)

概述

产品名称	Anti-RTF1抗体
描述	兔多克隆抗体to RTF1
宿主	Rabbit
经测试应用	适用于: WB, IP, IHC-P
种属反应性	与反应: Mouse, Human 预测可用于: Rat, Rabbit, Horse, Chicken, Guinea pig, Cow, Dog, Turkey, Pig, Chimpanzee, Zebrafish, Rhesus monkey, Gorilla, Tilapia, Orangutan, Xenopus tropicalis, Medaka fish 
免疫原	Immunogen corresponding to C terminal amino acids within Human RTF1 (EAW92492.1).
阳性对照	HeLa whole cell lysate (ab150035).
常规说明	<p>The Life Science industry has been in the grips of a reproducibility crisis for a number of years. Abcam is leading the way in addressing this with our range of recombinant monoclonal antibodies and knockout edited cell lines for gold-standard validation. Please check that this product meets your needs before purchasing.</p> <p>If you have any questions, special requirements or concerns, please send us an inquiry and/or contact our Support team ahead of purchase. Recommended alternatives for this product can be found below, along with publications, customer reviews and Q&As</p>

性能

形式	Liquid
存放说明	Shipped at 4°C. Upon delivery aliquot and store at -20°C. Avoid freeze / thaw cycles.
存储溶液	<p>pH: 6.8</p> <p>Preservative: 0.09% Sodium azide</p> <p>Constituents: 0.1% BSA, Tris buffered saline</p>
纯度	Immunogen affinity purified
克隆	多克隆
同种型	IgG

应用

The Abpromise guarantee

Abpromise™ 承诺保证使用 ab99362 于以下的经测试应用

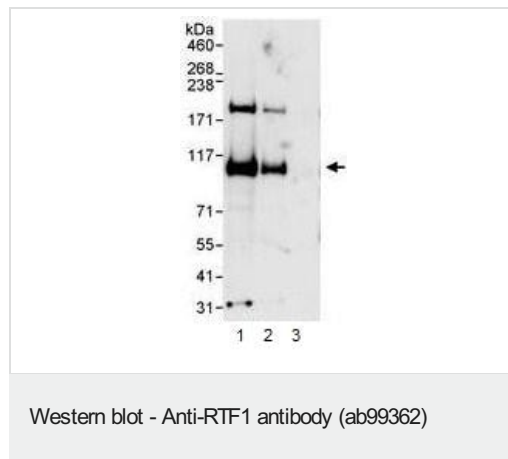
“应用说明”部分 下显示的仅为推荐的起始稀释度;实际最佳的稀释度/浓度应由使用者检定。

应用	Ab 评论	说明
WB		1/2000 - 1/10000. Predicted molecular weight: 77 kDa.
IP		Use at 2-5 µg/mg of lysate.
IHC-P		1/500 - 1/2000. Perform heat mediated antigen retrieval with citrate buffer pH 6 before commencing with IHC staining protocol.

靶标

功能	Plays a role in transcription-coupled histone modification. Plays a role in regulation of transcription. Required for maximal induction of heat-shock genes (By similarity). Binds single-stranded DNA.
序列相似性	Contains 1 Plus3 domain.
结构域	The Plus3 domain mediates single-stranded DNA-binding.
细胞定位	Nucleus > nucleoplasm.

图片



All lanes : Anti-RTF1 antibody (ab99362) at 0.04 µg/ml

Lane 1 : HeLa whole cell lysate at 50 µg

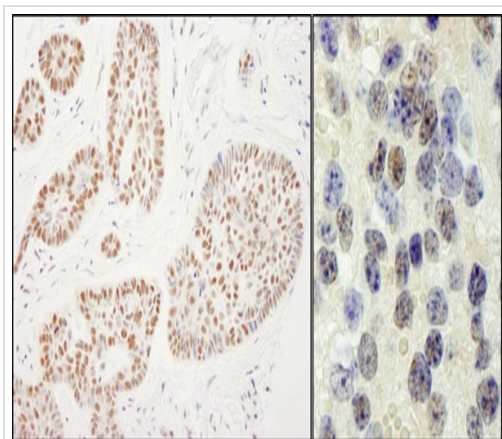
Lane 2 : HeLa whole cell lysate at 15 µg

Lane 3 : HeLa whole cell lysate at 5 µg

Developed using the ECL technique.

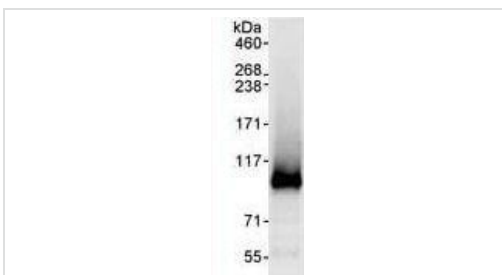
Predicted band size: 77 kDa

Exposure time: 10 seconds



Immunohistochemistry (Formalin/PFA-fixed paraffin-embedded sections) - Anti-RTF1 antibody (ab99362)

Immunohistochemistry (Formalin/PFA-fixed paraffin-embedded sections) analysis of human skin carcinoma (left) and mouse teratoma (right) tissues labelling RTF1 with ab99362 at 1/1000 (1µg/ml). Detection: DAB.



Immunoprecipitation - Anti-RTF1 antibody (ab99362)

Immunoprecipitation : 1 mg of HeLa cell lysate immunoprecipitated with ab99362 at 3 µg/mg lysate; 20% of immunoprecipitate loaded in lane

Western Blot: RTF1 antibody (ab99362) at 1 µg/ml developed using the ECL technique

Exposure time : 3 seconds

Predicted band size : 77 kDa

Please note: All products are "FOR RESEARCH USE ONLY. NOT FOR USE IN DIAGNOSTIC PROCEDURES"

Our Abpromise to you: Quality guaranteed and expert technical support

- Replacement or refund for products not performing as stated on the datasheet
- Valid for 12 months from date of delivery
- Response to your inquiry within 24 hours
- We provide support in Chinese, English, French, German, Japanese and Spanish
- Extensive multi-media technical resources to help you
- We investigate all quality concerns to ensure our products perform to the highest standards

If the product does not perform as described on this datasheet, we will offer a refund or replacement. For full details of the Abpromise,

please visit <https://www.abcam.cn/abpromise> or contact our technical team.

Terms and conditions

- Guarantee only valid for products bought direct from Abcam or one of our authorized distributors