


Anti-Rsk 2 / MAPKAP Kinase 1b antibody [Y83] ab32133

敲除验证
重组
RabMAb

[3 References](#)
[4 图像](#)

概述

产品名称	Anti-Rsk 2 / MAPKAP Kinase 1b抗体[Y83]
描述	兔单克隆抗体[Y83] to Rsk 2 / MAPKAP Kinase 1b
宿主	Rabbit
特异性	The antibody recognises Rsk2. It does not cross react with other S6 kinase family members.
经测试应用	适用于: WB, IHC-P 不适用于: ICC/IF
种属反应性	与反应: Human 预测可用于: Mouse, Rat 
免疫原	Synthetic peptide. This information is proprietary to Abcam and/or its suppliers.
阳性对照	HeLa whole cell lysate (ab150035) and human lymphoma
常规说明	<p>This product is a recombinant monoclonal antibody, which offers several advantages including:</p> <ul style="list-style-type: none"> - High batch-to-batch consistency and reproducibility - Improved sensitivity and specificity - Long-term security of supply - Animal-free production <p>For more information see here.</p> <p>Our RabMAb[®] technology is a patented hybridoma-based technology for making rabbit monoclonal antibodies. For details on our patents, please refer to RabMAb[®] patents.</p>

性能

形式	Liquid
存放说明	Shipped at 4°C. Upon delivery aliquot and store at -20°C. Avoid freeze / thaw cycles.
存储溶液	pH: 7.20 Preservative: 0.01% Sodium azide Constituents: 49% PBS, 50% Glycerol (glycerin, glycerine), 0.05% BSA
纯度	Protein A purified
克隆	单克隆
克隆编号	Y83

同种型

IgG

应用

The Abpromise guarantee **Abpromise™** 承诺保证使用 ab32133 于以下的经测试应用

“应用说明”部分下显示的仅为推荐的起始稀释度；实际最佳的稀释度/浓度应由使用者检定。

应用	Ab 评论	说明
WB		1/5000. Detects a band of approximately 90 kDa (predicted molecular weight: 84 kDa).
IHC-P		Use at an assay dependent concentration. Perform heat mediated antigen retrieval with citrate buffer pH 6 before commencing with IHC staining protocol.

应用说明

Is unsuitable for ICC/IF.

靶标

功能

Serine/threonine kinase that may play a role in mediating the growth-factor and stress induced activation of the transcription factor CREB.

组织特异性

Expressed in many tissues, highest levels in skeletal muscle.

疾病相关

Defects in RPS6KA3 are the cause of Coffin-Lowry syndrome (CLS) [MIM:303600]; an X-linked dominant disorder characterized by severe mental retardation with facial and digital dysmorphisms, and progressive skeletal deformations.

序列相似性

Belongs to the protein kinase superfamily. AGC Ser/Thr protein kinase family. S6 kinase subfamily.

Contains 1 AGC-kinase C-terminal domain.

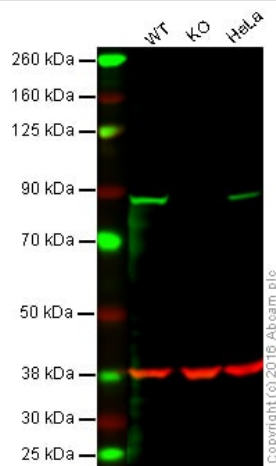
Contains 2 protein kinase domains.

翻译后修饰

Autophosphorylated on Ser-386, as part of the activation process.

Ser-227 phosphorylation promotes Ser-386 phosphorylation and leads to basal activation. Full activation by growth factors requires additional phosphorylation on Ser-369.

图片



Western blot - Anti-Rsk 2 / MAPKAP Kinase 1b antibody [Y83] (ab32133)

Lane 1: Wild-type HAP1 cell lysate (40 µg)

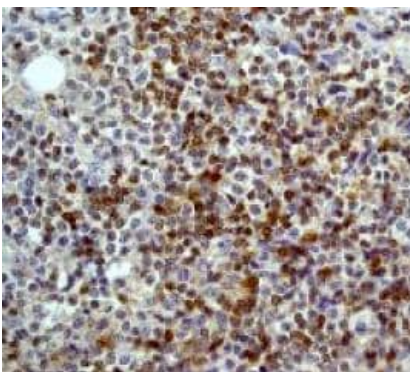
Lane 2: Rsk 2 / MAPKAP Kinase 1b knockout HAP1 cell lysate (40 µg)

Lane 3: HeLa cell lysate (40 µg)

Lane 4: (40 µg)

Lanes 1 - 4: Merged signal (red and green). Green - ab32133 observed at 88 kDa. Red - loading control, **ab8245**, observed at 37 kDa.

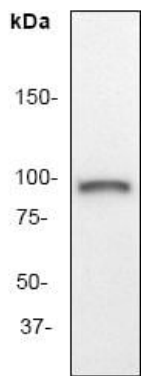
ab32133 was shown to specifically react with Rsk 2 / MAPKAP Kinase 1b when Rsk 2 / MAPKAP Kinase 1b knockout samples were used. Wild-type and Rsk 2 / MAPKAP Kinase 1b knockout samples were subjected to SDS-PAGE. Ab32133 and **ab8245** (loading control to GAPDH) were diluted at 1/5000 and 1:10,000 dilution respectively and incubated overnight at 4°C. Blots were developed with Goat anti-Rabbit IgG H&L (IRDye® 800CW) preadsorbed **ab216773** and Goat anti-Mouse IgG H&L (IRDye® 680RD) preadsorbed **ab216776** secondary antibodies at 1:10,000 dilution for 1 hour at room temperature before imaging.



Immunohistochemistry (Formalin/PFA-fixed paraffin-embedded sections) - Anti-Rsk 2 / MAPKAP Kinase 1b antibody [Y83] (ab32133)

ab32133, staining human lymphoma by immunohistochemistry, Paraffin embedded tissue

Perform heat mediated antigen retrieval with citrate buffer pH 6 before commencing with IHC staining protocol.



Anti-Rsk 2 / MAPKAP Kinase 1b antibody [Y83] (ab32133) at
1/5000 dilution + HeLa cell lysate

Predicted band size: 84 kDa

Observed band size: 90 kDa

Western blot - Anti-Rsk 2 / MAPKAP Kinase 1b
antibody [Y83] (ab32133)

Why choose a recombinant antibody?

 Research with confidence Consistent and reproducible results	 Long-term and scalable supply Recombinant technology
 Success from the first experiment Confirmed specificity	 Ethical standards compliant Animal-free production

Anti-Rsk 2 / MAPKAP Kinase 1b antibody [Y83]
(ab32133)

Please note: All products are "FOR RESEARCH USE ONLY. NOT FOR USE IN DIAGNOSTIC PROCEDURES"

Our Abpromise to you: Quality guaranteed and expert technical support

- Replacement or refund for products not performing as stated on the datasheet
- Valid for 12 months from date of delivery
- Response to your inquiry within 24 hours
- We provide support in Chinese, English, French, German, Japanese and Spanish
- Extensive multi-media technical resources to help you
- We investigate all quality concerns to ensure our products perform to the highest standards

If the product does not perform as described on this datasheet, we will offer a refund or replacement. For full details of the Abpromise, please visit <https://www.abcam.cn/abpromise> or contact our technical team.

Terms and conditions

- Guarantee only valid for products bought direct from Abcam or one of our authorized distributors