


Anti-Rsk 2 / MAPKAP Kinase 1b antibody ab92826

1 图像

概述

产品名称	Anti-Rsk 2 / MAPKAP Kinase 1b抗体
描述	兔多克隆抗体to Rsk 2 / MAPKAP Kinase 1b
宿主	Rabbit
特异性	Specific for ~90k Rsk 2/MAPWAP Kinase 1b protein.
经测试应用	适用于: WB
种属反应性	与反应: Human 预测可用于: Mouse, Rat, Chicken, Cow, Dog 
免疫原	Peptide corresponding to amino acid residues from the C terminal region of Rat Rsk 2/ MAPKAP Kinase 1b, conjugated to KLH.
阳性对照	HeLa lysate
常规说明	<p>The Life Science industry has been in the grips of a reproducibility crisis for a number of years. Abcam is leading the way in addressing this with our range of recombinant monoclonal antibodies and knockout edited cell lines for gold-standard validation. Please check that this product meets your needs before purchasing.</p> <p>If you have any questions, special requirements or concerns, please send us an inquiry and/or contact our Support team ahead of purchase. Recommended alternatives for this product can be found below, along with publications, customer reviews and Q&As</p>

性能

形式	Liquid
存放说明	Shipped at 4°C. Store at -20°C. Stable for 12 months at -20°C.
存储溶液	Constituents: 0.01% BSA, 50% Glycerol, 0.87% Sodium chloride, 0.238% HEPES
纯度	Immunogen affinity purified
纯化说明	Prepared from rabbit serum by affinity purification via chromatography on an affinity column, with the C terminal peptide used as an antigen.
克隆	多克隆
同种型	IgG

应用

The Abpromise guarantee **Abpromise™**承诺保证使用ab92826于以下的经测试应用

“应用说明”部分 下显示的仅为推荐的起始稀释度;实际最佳的稀释度/浓度应由使用者检定。

应用	Ab评论	说明
WB		1/1000. Detects a band of approximately 90 kDa (predicted molecular weight: 84 kDa).

靶标

功能 Serine/threonine kinase that may play a role in mediating the growth-factor and stress induced activation of the transcription factor CREB.

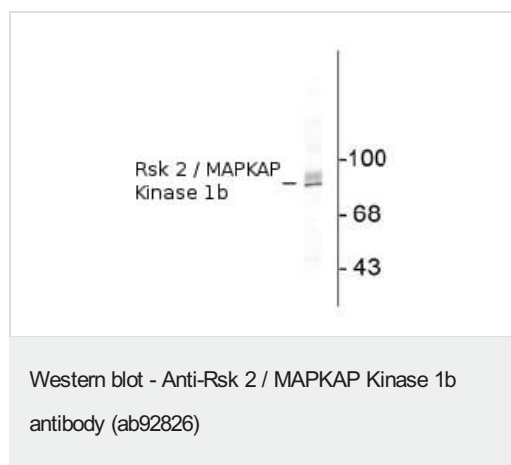
组织特异性 Expressed in many tissues, highest levels in skeletal muscle.

疾病相关 Defects in RPS6KA3 are the cause of Coffin-Lowry syndrome (CLS) [MIM:303600]; an X-linked dominant disorder characterized by severe mental retardation with facial and digital dysmorphisms, and progressive skeletal deformations.

序列相似性 Belongs to the protein kinase superfamily. AGC Ser/Thr protein kinase family. S6 kinase subfamily.
Contains 1 AGC-kinase C-terminal domain.
Contains 2 protein kinase domains.

翻译后修饰 Autophosphorylated on Ser-386, as part of the activation process.
Ser-227 phosphorylation promotes Ser-386 phosphorylation and leads to basal activation. Full activation by growth factors requires additional phosphorylation on Ser-369.

图片



Anti-Rsk 2 / MAPKAP Kinase 1b antibody (ab92826) at 1/1000 dilution + HepG2 lysate

Predicted band size: 84 kDa

Observed band size: 90 kDa

Please note: All products are "FOR RESEARCH USE ONLY. NOT FOR USE IN DIAGNOSTIC PROCEDURES"

Our Abpromise to you: Quality guaranteed and expert technical support

- Replacement or refund for products not performing as stated on the datasheet

- Valid for 12 months from date of delivery
- Response to your inquiry within 24 hours

- We provide support in Chinese, English, French, German, Japanese and Spanish
- Extensive multi-media technical resources to help you
- We investigate all quality concerns to ensure our products perform to the highest standards

If the product does not perform as described on this datasheet, we will offer a refund or replacement. For full details of the Abpromise, please visit <https://www.abcam.cn/abpromise> or contact our technical team.

Terms and conditions

- Guarantee only valid for products bought direct from Abcam or one of our authorized distributors