

Anti-RRM2 antibody [1E1] ab57653

★★★★★ [3 Abreviews](#) [36 References](#) [6 图像](#)

概述

产品名称	Anti-RRM2抗体[1E1]
描述	小鼠单克隆抗体[1E1] to RRM2
宿主	Mouse
经测试应用	适用于: WB, IHC-P, ICC/IF, Flow Cyt
种属反应性	与反应: Human
免疫原	Recombinant fragment, corresponding to amino acids 1-111 of Human RRM2
常规说明	<p>This product was changed from ascites to tissue culture supernatant on 12/3/19. Please note that the dilutions may need to be adjusted accordingly. If you have any questions, please do not hesitate to contact our scientific support team.</p> <p>The Life Science industry has been in the grips of a reproducibility crisis for a number of years. Abcam is leading the way in addressing this with our range of recombinant monoclonal antibodies and knockout edited cell lines for gold-standard validation. Please check that this product meets your needs before purchasing.</p> <p>If you have any questions, special requirements or concerns, please send us an inquiry and/or contact our Support team ahead of purchase. Recommended alternatives for this product can be found below, along with publications, customer reviews and Q&As</p>

性能

形式	Liquid
存放说明	Shipped at 4°C. Upon delivery aliquot and store at -20°C or -80°C. Avoid repeated freeze / thaw cycles.
存储溶液	pH: 7.40 Constituent: 100% PBS
纯度	Protein A purified
克隆	单克隆
克隆编号	1E1
同种型	IgG1
轻链类型	kappa

应用

The Abpromise guarantee **Abpromise™**承诺保证使用ab57653于以下的经测试应用

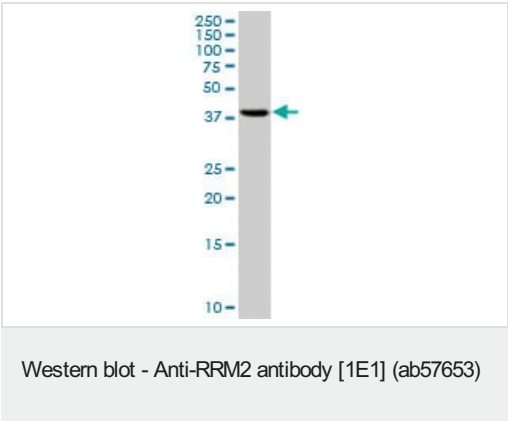
“应用说明”部分 下显示的仅为推荐的起始稀释度;实际最佳的稀释度/浓度应由使用者检定。

应用	Ab评论	说明
WB	★★★★☆ (3)	Use at an assay dependent concentration. Predicted molecular weight: 45 kDa.
IHC-P		Use at an assay dependent concentration.
ICC/IF		Use at an assay dependent concentration.
Flow Cyt		Use at an assay dependent concentration. ab170190 - Mouse monoclonal IgG1, is suitable for use as an isotype control with this antibody.

靶标

功能	Provides the precursors necessary for DNA synthesis. Catalyzes the biosynthesis of deoxyribonucleotides from the corresponding ribonucleotides. Inhibits Wnt signaling.
通路	Genetic information processing; DNA replication.
序列相似性	Belongs to the ribonucleoside diphosphate reductase small chain family.
翻译后修饰	Phosphorylation on Ser-20 relieves the inhibitory effect on Wnt signaling.
细胞定位	Cytoplasm.

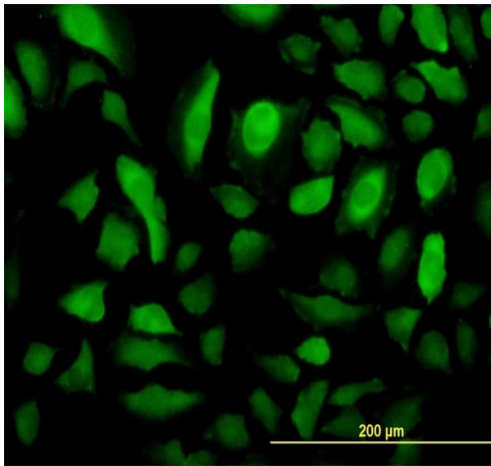
图片



Anti-RRM2 antibody [1E1] (ab57653) at 1 µg/ml + HepG2 (human liver hepatocellular carcinoma cell line) cell lysate

Predicted band size: 45 kDa

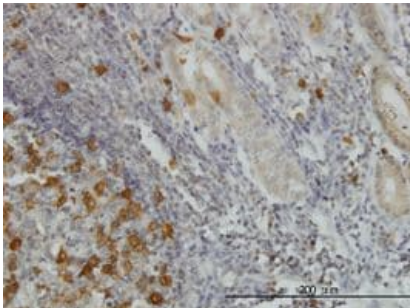
This image was generated using the ascites version of the product.



Immunocytochemistry/ Immunofluorescence - Anti-RRM2 antibody [1E1] (ab57653)

HeLa (human epithelial cell line from cervix adenocarcinoma) cells stained for RRM2 (green) using ab57653 at 10 μg/ml in ICC/IF.

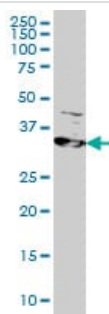
This image was generated using the ascites version of the product.



Immunohistochemistry (Formalin/PFA-fixed paraffin-embedded sections) - Anti-RRM2 antibody [1E1] (ab57653)

RRM2 antibody (ab57653) used in immunohistochemistry at 5ug/ml on formalin fixed and paraffin embedded human stomach.

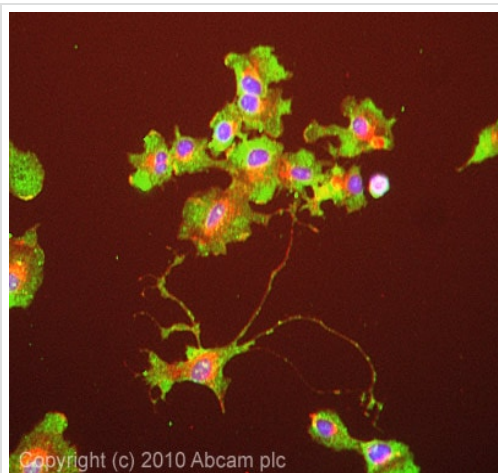
This image was generated using the ascites version of the product.



Western blot - Anti-RRM2 antibody [1E1] (ab57653)

RRM2 antibody (ab57653) at 1 ug/lane + HeLa cell lysate at 25ug/lane.

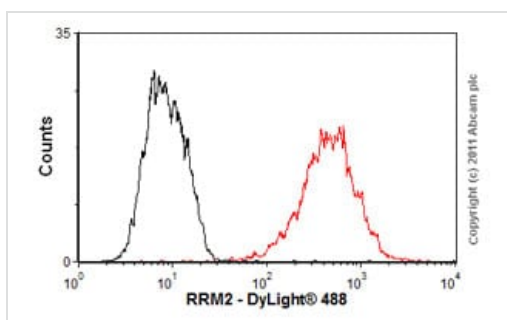
This image was generated using the ascites version of the product.



Immunocytochemistry/ Immunofluorescence - Anti-RRM2 antibody [1E1] (ab57653)

ICC/IF image of ab57653 stained HepG2 cells. The cells were 100% methanol fixed (5 min) and then incubated in 1%BSA / 10% normal goat serum / 0.3M glycine in 0.1% PBS-Tween for 1h to permeabilise the cells and block non-specific protein-protein interactions. The cells were then incubated with the antibody (ab57653, 10µg/ml) overnight at +4°C. The secondary antibody (green) was Alexa Fluor® 488 goat anti-mouse IgG (H+L) used at a 1/1000 dilution for 1h. Alexa Fluor® 594 WGA was used to label plasma membranes (red) at a 1/200 dilution for 1h. DAPI was used to stain the cell nuclei (blue) at a concentration of 1.43µM.

This image was generated using the ascites version of the product.



Flow Cytometry - Anti-RRM2 antibody [1E1] (ab57653)

Overlay histogram showing HepG2 cells stained with ab57653 (red line). The cells were fixed with 80% methanol (5 min) and then permeabilized with 0.1% PBS-Tween for 20 min. The cells were then incubated in 1x PBS / 10% normal goat serum / 0.3M glycine to block non-specific protein-protein interactions followed by the antibody (ab57653, 1µg/1x10⁶ cells) for 30 min at 22°C. The secondary antibody used was DyLight® 488 goat anti-mouse IgG (H+L) ([ab96879](#)) at 1/500 dilution for 30 min at 22°C. Isotype control antibody (black line) was mouse IgG1 [ICIGG1] ([ab91353](#), 2µg/1x10⁶ cells) used under the same conditions. Acquisition of >5,000 events was performed.

This image was generated using the ascites version of the product.

Please note: All products are "FOR RESEARCH USE ONLY. NOT FOR USE IN DIAGNOSTIC PROCEDURES"

Our Abpromise to you: Quality guaranteed and expert technical support

- Replacement or refund for products not performing as stated on the datasheet
- Valid for 12 months from date of delivery
- Response to your inquiry within 24 hours
- We provide support in Chinese, English, French, German, Japanese and Spanish
- Extensive multi-media technical resources to help you
- We investigate all quality concerns to ensure our products perform to the highest standards

If the product does not perform as described on this datasheet, we will offer a refund or replacement. For full details of the Abpromise, please visit <https://www.abcam.cn/abpromise> or contact our technical team.

Terms and conditions

- Guarantee only valid for products bought direct from Abcam or one of our authorized distributors