

Anti-RREB1 antibody ab64168

3 References [1 图像](#)

概述

产品名称	Anti-RREB1抗体
描述	兔多克隆抗体to RREB1
宿主	Rabbit
经测试应用	适用于: IHC-P
种属反应性	与反应: Mouse
免疫原	Recombinant full length protein (Mouse)
常规说明	<p>The Life Science industry has been in the grips of a reproducibility crisis for a number of years. Abcam is leading the way in addressing this with our range of recombinant monoclonal antibodies and knockout edited cell lines for gold-standard validation. Please check that this product meets your needs before purchasing.</p> <p>If you have any questions, special requirements or concerns, please send us an inquiry and/or contact our Support team ahead of purchase. Recommended alternatives for this product can be found below, along with publications, customer reviews and Q&As</p>

性能

形式	Liquid
存放说明	Shipped at 4°C. Upon delivery aliquot and store at -20°C. Avoid freeze / thaw cycles.
存储溶液	<p>pH: 7.20</p> <p>Preservative: 0.01% Sodium azide</p> <p>Constituents: 0.42% Potassium phosphate, 0.87% Sodium chloride</p>
纯度	Protein A purified
克隆	多克隆
同种型	IgG

应用

The Abpromise guarantee **Abpromise™** 承诺保证使用ab64168于以下的经测试应用

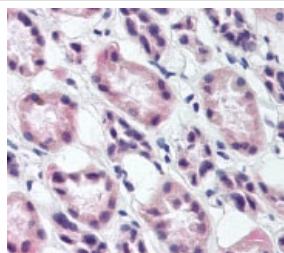
“应用说明”部分 下显示的仅为推荐的起始稀释度;实际最佳的稀释度/浓度应由使用者检定。

应用	Ab评论	说明
IHC-P		Use a concentration of 10 µg/ml. Perform heat mediated antigen retrieval with citrate buffer pH 6 before commencing with IHC staining protocol.

靶标

功能	Transcription factor that binds specifically to the RAS-responsive elements (RRE) of gene promoters. May be involved in Ras/Raf-mediated cell differentiation by enhancing calcitonin expression. Represses the angiotensinogen gene. Negatively regulates the transcriptional activity of AR. Potentiates the transcriptional activity of NEUROD1.
组织特异性	Expressed in heart, placenta, lung, liver, skeletal muscle, kidney and pancreas. Not found in the brain.
序列相似性	Belongs to the krueppel C2H2-type zinc-finger protein family. Contains 15 C2H2-type zinc fingers.
翻译后修饰	Phosphorylated upon DNA damage, probably by ATM or ATR.
细胞定位	Nucleus speckle.

图片



ab64168 at 10µg/ml staining RREB1 in mouse kidney by Immunohistochemistry, Formalin-fixed, paraffin-embedded tissue.

Immunohistochemistry (Formalin/PFA-fixed paraffin-embedded sections) - Anti-RREB1 antibody (ab64168)

Please note: All products are "FOR RESEARCH USE ONLY. NOT FOR USE IN DIAGNOSTIC PROCEDURES"

Our Abpromise to you: Quality guaranteed and expert technical support

- Replacement or refund for products not performing as stated on the datasheet
- Valid for 12 months from date of delivery
- Response to your inquiry within 24 hours
- We provide support in Chinese, English, French, German, Japanese and Spanish
- Extensive multi-media technical resources to help you
- We investigate all quality concerns to ensure our products perform to the highest standards

If the product does not perform as described on this datasheet, we will offer a refund or replacement. For full details of the Abpromise, please visit <https://www.abcam.cn/abpromise> or contact our technical team.

Terms and conditions

- Guarantee only valid for products bought direct from Abcam or one of our authorized distributors