


Anti-RPS6 (phospho S244 + S247) antibody ab12865

1 References [1 图像](#)

概述

产品名称	Anti-RPS6 (phospho S244 + S247)抗体
描述	兔多克隆抗体to RPS6 (phospho S244 + S247)
宿主	Rabbit
经测试应用	适用于: WB
种属反应性	与反应: Human 预测可用于: Mouse, Rat 
免疫原	Synthetic peptide. This information is proprietary to Abcam and/or its suppliers.
阳性对照	HeLa +/- TNF-alpha or anisomycin
常规说明	<p>The Life Science industry has been in the grips of a reproducibility crisis for a number of years. Abcam is leading the way in addressing this with our range of recombinant monoclonal antibodies and knockout edited cell lines for gold-standard validation. Please check that this product meets your needs before purchasing.</p> <p>If you have any questions, special requirements or concerns, please send us an inquiry and/or contact our Support team ahead of purchase. Recommended alternatives for this product can be found below, along with publications, customer reviews and Q&As</p>

性能

形式	Liquid
存放说明	Shipped at 4°C. Store at +4°C short term (1-2 weeks). Upon delivery aliquot. Store at -20°C or -80°C. Avoid freeze / thaw cycle.
存储溶液	<p>pH: 7.30</p> <p>Preservative: 0.05% Sodium azide</p> <p>Constituents: PBS, 50% Glycerol (glycerin, glycerine), 0.1% BSA</p>
纯度	Dulbecco's PBS without magnesium and calcium
纯化说明	Immunogen affinity purified
	Purified from rabbit serum by sequential epitope-specific chromatography. The antibody has been negatively preadsorbed using a non-phosphopeptide corresponding to the site of phosphorylation to remove antibody that is reactive with non-phosphorylated RPS6. The final product is generated by affinity chromatography using a RPS6-derived peptide that is

克隆

多克隆

同种型

phosphorylated at serines 244 and 247.

IgG

应用

The Abpromise guarantee

Abpromise™承诺保证使用ab12865于以下的经测试应用

“应用说明”部分 下显示的仅为推荐的起始稀释度;实际最佳的稀释度/浓度应由使用者检定。

应用	Ab评论	说明
WB		1/1000. Detects a band of approximately 32 kDa (predicted molecular weight: 31 kDa).

靶标

功能

May play an important role in controlling cell growth and proliferation through the selective translation of particular classes of mRNA.

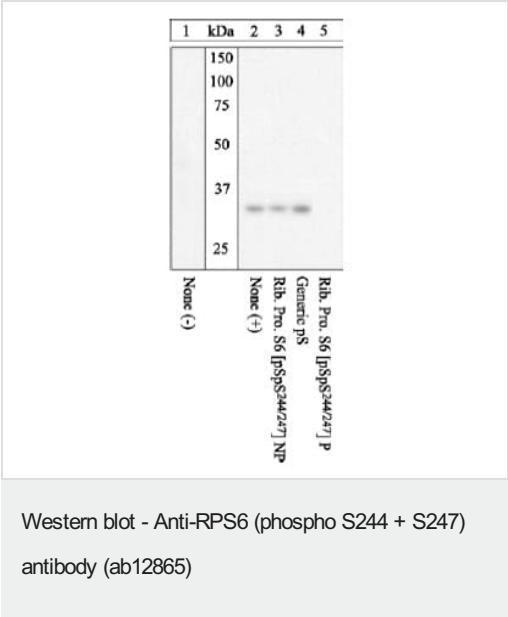
序列相似性

Belongs to the ribosomal protein S6e family.

翻译后修饰

Ribosomal protein S6 is the major substrate of protein kinases in eukaryote ribosomes. The phosphorylation is stimulated by growth factors, tumor promoting agents, and mitogens. It is dephosphorylated at growth arrest.

图片



Lysates prepared from HeLa cells left untreated (1) or treated with TNF-alpha (2-5) were resolved by SDS-PAGE on a 14% polyacrylamide gel and transferred to PVDF. Membranes were blocked with a 5% BSA-TBST buffer for one hour at room temperature, and incubated with ab12865 for two hours at room temperature in a 3% BSA-TBST buffer, following prior incubation with: no peptide (1, 2), the non-phosphopeptide corresponding to the immunogen (3), a generic phosphoserine-containing peptide (4), or the phosphopeptide immunogen (5). After washing, membranes were incubated with goat anti-rabbit IgG HRP conjugate and bands were detected. The data show that only the peptide corresponding to RPS6 [phospho S244 & phospho S247] blocks the signal, verifying the specificity of the antibody.

Lysates prepared from HeLa cells left untreated (1) or treated with TNF-alpha (2-5) were resolved by SDS-PAGE on a 14% polyacrylamide gel and transferred to PVDF. Membranes were blocked with a 5% BSA-TBST

Please note: All products are "FOR RESEARCH USE ONLY. NOT FOR USE IN DIAGNOSTIC PROCEDURES"

Our Abpromise to you: Quality guaranteed and expert technical support

- Replacement or refund for products not performing as stated on the datasheet
- Valid for 12 months from date of delivery
- Response to your inquiry within 24 hours

- We provide support in Chinese, English, French, German, Japanese and Spanish
- Extensive multi-media technical resources to help you
- We investigate all quality concerns to ensure our products perform to the highest standards

If the product does not perform as described on this datasheet, we will offer a refund or replacement. For full details of the Abpromise, please visit <https://www.abcam.cn/abpromise> or contact our technical team.

Terms and conditions

- Guarantee only valid for products bought direct from Abcam or one of our authorized distributors