

# Anti-RPS6 (phospho S235) antibody [EP1338(2)Y] - Ribosome Marker ab80158

**重组** RabMAb

**2 References**   **6 图像**

## 概述

产品名称	Anti-RPS6 (phospho S235)抗体[EP1338(2)Y] - Ribosome Marker
描述	兔单克隆抗体[EP1338(2)Y] to RPS6 (phospho S235) - Ribosome Marker
宿主	Rabbit
经测试应用	<b>适用于:</b> WB, IP, IHC-P, Dot blot <b>不适用于:</b> Flow Cyt or ICC/IF
种属反应性	<b>与反应:</b> Human
免疫原	Synthetic peptide. This information is proprietary to Abcam and/or its suppliers.
阳性对照	WB: HeLa cell lysate, untreated or treated with Calyculin A. IHC: Human breast adenocarcinoma tissue. IP: 293T lysate.
常规说明	<p>This product is a recombinant monoclonal antibody, which offers several advantages including:</p> <ul style="list-style-type: none"> <li>- High batch-to-batch consistency and reproducibility</li> <li>- Improved sensitivity and specificity</li> <li>- Long-term security of supply</li> <li>- Animal-free production</li> </ul> <p>For more information <a href="#">see here</a>.</p> <p>Our RabMAb<sup>®</sup> technology is a patented hybridoma-based technology for making rabbit monoclonal antibodies. For details on our patents, please refer to <a href="#">RabMAb<sup>®</sup> patents</a>.</p> <p>Rat: We have preliminary internal testing data to indicate this antibody may not react with this species. Please contact us for more information.</p>

## 性能

形式	Liquid
存放说明	Shipped at 4°C. Store at +4°C short term (1-2 weeks). Upon delivery aliquot. Store at -20°C long term. Avoid freeze / thaw cycle.
存储溶液	pH: 7.20 Preservative: 0.01% Sodium azide Constituents: 9% PBS, 40% Glycerol (glycerin, glycerine), 0.05% BSA, 50% Tissue culture

纯度	supernatant
克隆	Tissue culture supernatant
克隆编号	单克隆
同种型	EP1338(2)Y
	IgG

## 应用

**The Abpromise guarantee**      **Abpromise™承诺保证使用ab80158于以下的经测试应用**

“应用说明”部分下显示的仅为推荐的起始稀释度;实际最佳的稀释度/浓度应由使用者检定。

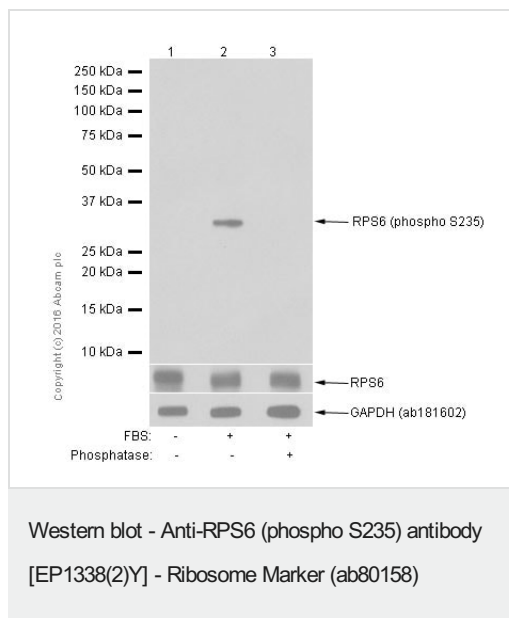
应用	Ab评论	说明
<b>WB</b>		1/10000 - 1/200000. Detects a band of approximately 30 kDa (predicted molecular weight: 30 kDa).
<b>IP</b>		1/30.
<b>IHC-P</b>		Use at an assay dependent concentration. Perform heat mediated antigen retrieval with Tris/EDTA buffer pH 9.0 before commencing with IHC staining protocol.
<b>Dot blot</b>		Use at an assay dependent concentration.

应用说明 Is unsuitable for Flow Cyt or ICC/IF.

## 靶标

<b>功能</b>	May play an important role in controlling cell growth and proliferation through the selective translation of particular classes of mRNA.
<b>序列相似性</b>	Belongs to the ribosomal protein S6e family.
<b>翻译后修饰</b>	Ribosomal protein S6 is the major substrate of protein kinases in eukaryote ribosomes. The phosphorylation is stimulated by growth factors, tumor promoting agents, and mitogens. It is dephosphorylated at growth arrest.

图片



**All lanes :** Anti-RPS6 (phospho S235) antibody [EP1338(2)Y] - Ribosome Marker (ab80158) at 1/1000 dilution

**Lane 1 :** HeLa (Human cervix adenocarcinoma epithelial cell) serum starved for 24 h. Whole cell lysates

**Lane 2 :** HeLa (Human cervix adenocarcinoma epithelial cell) serum starved for 24 h, then 20% FBS incubated for 90 minutes. Whole cell lysates

**Lane 3 :** HeLa (Human cervix adenocarcinoma epithelial cell) serum starved for 24 h, then 20% FBS incubated for 90 minutes. Whole cell lysates. Then the membrane was incubated with phosphatase.

Lysates/proteins at 15 µg per lane.

## Secondary

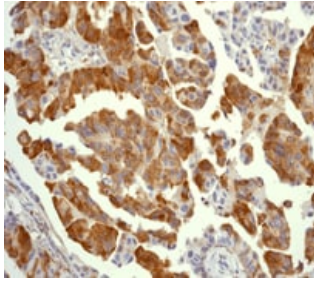
**All lanes :** Goat Anti-Rabbit IgG H&L (HRP) (**ab97051**) at 1/20000 dilution

**Predicted band size:** 30 kDa

**Observed band size:** 30 kDa

**Exposure time:** 1 minute

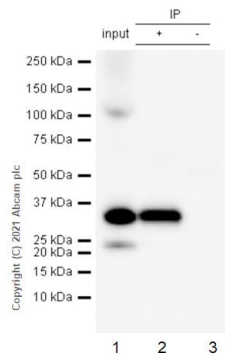
Blocking and diluting buffer and concentration: 5% NFDM/TBST.



Immunohistochemistry (Formalin/PFA-fixed paraffin-embedded sections) - Anti-RPS6 (phospho S235) antibody [EP1338(2)Y] - Ribosome Marker (ab80158)

ab80158 at 1/100-1/250 dilution staining RPS6 in human breast adenocarcinoma by Immunohistochemistry, Paraffin-embedded tissue.

Perform heat mediated antigen retrieval with EDTA buffer pH 9 before commencing with IHC staining protocol.



Immunoprecipitation - Anti-RPS6 (phospho S235) antibody [EP1338(2)Y] - Ribosome Marker (ab80158)

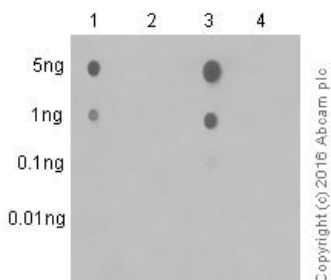
RPS6 was immunoprecipitated from 0.35 mg 293T (Human embryonic kidney epithelial cell) treated with Calyculin A(100nM 30min) whole cell lysate 10 µg with ab80158 at 1/50 dilution (2µg). VeriBlot for IP Detection Reagent (HRP)([ab131366](#)) was used at 1/5000 dilution.

**Lane 1:** 293T (Human embryonic kidney epithelial cell) treated with Calyculin A(100nM 30min) whole cell lysate 10 µg

**Lane 2:** ab80158 IP in 293T treated with Calyculin A(100nM 30min) whole cell lysate

**Lane 3:** Rabbit monoclonal IgG ([ab172730](#)) instead of ab80158 in 293T treated with Calyculin A(100nM 30min) whole cell lysate

Blocking and dilution buffer and concentration: 5% NFDM/TBST.



Dot Blot - Anti-RPS6 (phospho S235) antibody [EP1338(2)Y] - Ribosome Marker (ab80158)

Dot Blot analysis of -

**Lane 1:** Rb (pS235) phospho peptide

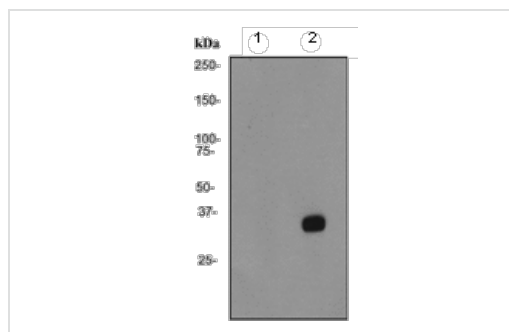
**Lane 2:** Rb (pS236) phospho peptide

**Lane 3:** Rb (pS235 & pS236) phospho peptide

**Lane 4:** Rb non-phospho peptide

5% NFDM/TBST was used as the diluting and blocking buffer.

[ab97051](#) Goat Anti-Rabbit IgG, (H+L), Peroxidase conjugated was used as the secondary antibody at 1/100000 dilution. Exposure time: 3 minutes.



Western blot - Anti-RPS6 (phospho S235) antibody [EP1338(2)Y] - Ribosome Marker (ab80158)

**All lanes :** Anti-RPS6 (phospho S235) antibody [EP1338(2)Y] - Ribosome Marker (ab80158) at 1/200000 dilution

**Lane 1 :** HeLa cell lysate, untreated

**Lane 2 :** HeLa cell lysate, treated with Calyculin A

Lysates/proteins at 10 µg per lane.

### Secondary

**All lanes :** goat anti-rabbit HRP at 1/2000 dilution

**Predicted band size:** 30 kDa

**Observed band size:** 30 kDa

Why choose a recombinant antibody?

**Research with confidence**  
Consistent and reproducible results

**Long-term and scalable supply**  
Recombinant technology

**Success from the first experiment**  
Confirmed specificity

**Ethical standards compliant**  
Animal-free production

Anti-RPS6 (phospho S235) antibody [EP1338(2)Y] - Ribosome Marker (ab80158)

**Please note:** All products are "FOR RESEARCH USE ONLY. NOT FOR USE IN DIAGNOSTIC PROCEDURES"

### Our Abpromise to you: Quality guaranteed and expert technical support

- Replacement or refund for products not performing as stated on the datasheet
- Valid for 12 months from date of delivery
- Response to your inquiry within 24 hours
- We provide support in Chinese, English, French, German, Japanese and Spanish
- Extensive multi-media technical resources to help you
- We investigate all quality concerns to ensure our products perform to the highest standards

If the product does not perform as described on this datasheet, we will offer a refund or replacement. For full details of the Abpromise, please visit <https://www.abcam.cn/abpromise> or contact our technical team.

## Terms and conditions

---

- Guarantee only valid for products bought direct from Abcam or one of our authorized distributors